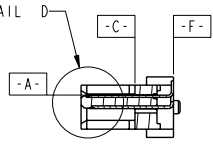
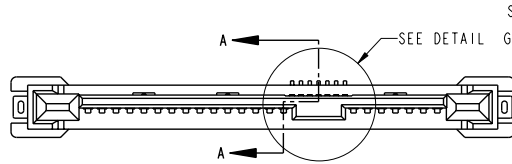
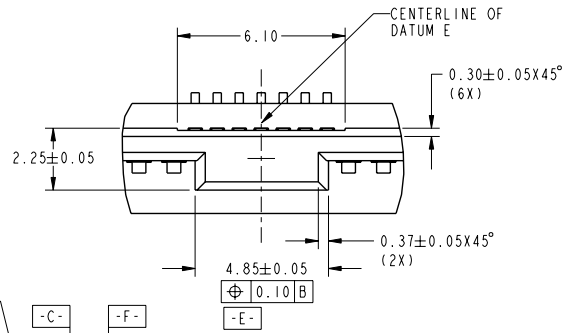
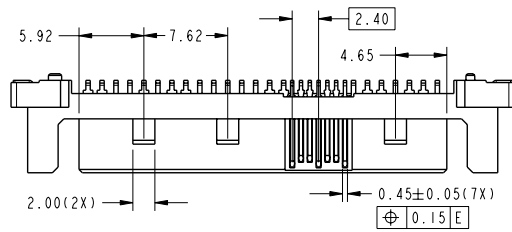


FCI  
Copyright FCI.

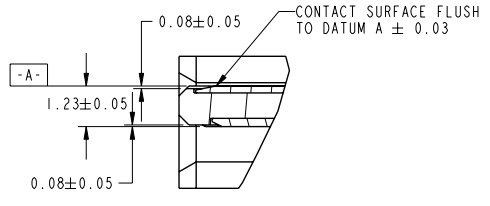
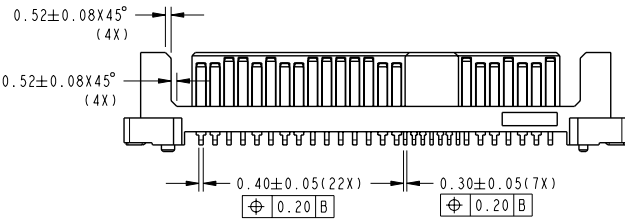
www.fciconnect.com		surface ASME Y14.5	tolerance std ASME Y14.5	projection MM
TOLERANCES UNLESS OTHERWISE SPECIFIED		0.x ±0.25	size A4	Scale 2:1
ANGULAR		0.xx ±0.13	ECN S07-0382	
LINEAR		0.xxx ±0.050	Spec ref	
Product family				
Dr SH TAN	2004-08-20	SAS PLUG		
Eng HK LIM	2007-11-02	VERTICAL SMT ASSY		
Chr HK LIM	2007-11-02	CUSTOMER		
Appr JOEY NG	2007-11-02	sheet 1 of 3		
Rev	ECN no	dr	date	Rev.
H	S07-0382	HKL	2007-11-02	H
B	S05-0368	HKL	2005-12-29	
C	S06-0077	HKL	2006-03-13	
D	S06-0182	HKL	2006-05-26	
E	S06-0276	HKL	2006-08-18	
F	S07-0107	HKL	2007-04-11	
G	S07-0301	HKL	2007-09-05	

PDM: Rev:H STATUS:Released Printed: Dec 01, 2010

PRODUCT NO.  
SEE TABLE



DETAIL G  
SCALE 5:1



DETAIL D  
SCALE 6:1



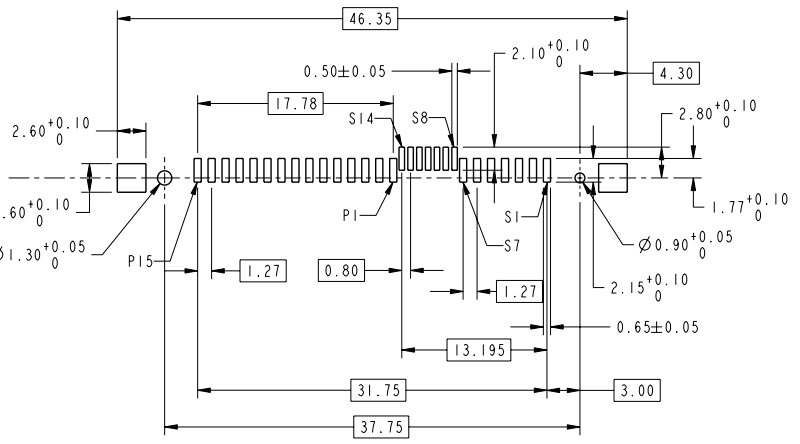
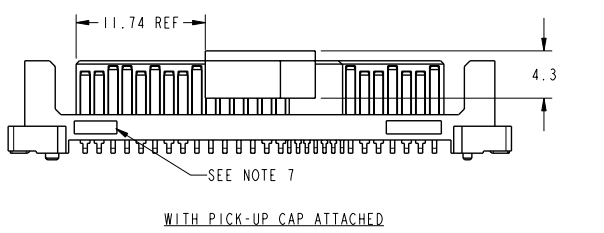
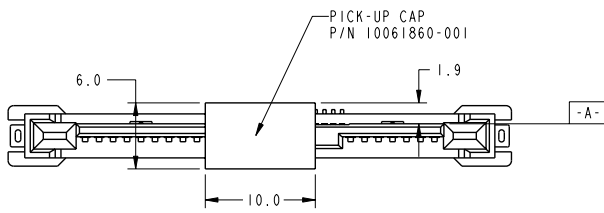
Copyright FCJ.

	TITLE	SAS PLUG	DRG. NO.	10041724	REV.	H
		VERTICAL SMT ASSY	CATALOG NO.	CUSTOMER	sheet 2 of 3	

REV E - 2004-03-28

PDM: Rev:H STATUS:Released 4 Printed: Dec 01, 2010

PRODUCT NO.	WITH PICK-UP CAP	PACKAGING	PLATING SPEC.
10041724-001LF/-002LF	NO	TRAY	-001LF REFER TO NOTE 2A
10041724-001CLF/-002CLF	YES	TAPE & REEL	-002LF REFER TO NOTE 2B
10041724-001C-TRLF/-002C-TRLF			



RECOMMENDED SOLDER PAD LAYOUT

- NOTES:
- MATERIAL:  
HOUSING & PICK-UP CAP: HIGH TEMPERATURE PLASTIC, BLACK, UL94V-0  
CONTACT & HOLD DOWN: COPPER ALLOY
  - FINISH:  
CONTACT: 1.27um MIN. NICKEL UNDERPLATE OVERALL,  
2.00um MIN. 100% MATTE TIN(LEAD FREE) ON SOLDER TAIL,  
A) 0.76um MIN. GOLD ON CONTACT AREA  
B) 0.76um MIN. GXT<sup>TM</sup> ON CONTACT AREA  
HOLD DOWN: 2.54um MIN. 100% MATTE TIN(LEAD FREE) OVER 1.27um MIN. NICKEL UNDERPLATE
  - THIS PRODUCT MEETS EUROPEAN UNION DIRECTIVES AND OTHER COUNTRY REGULATIONS AS DESCRIBED IN GS-22-008
  - THE HOUSING WILL WITHSTAND EXPOSURE TO 260°C PEAK TEMPERATURE FOR 10 SECONDS IN A CONVECTION, INFRA-RED OR VAPOR PHASE REFLOW OVEN
  - PART WITH PICK-UP CAP. P/N XXXXXXXX-XXXCLF
  - FOR TAPE & REEL PACKAGING, P/N XXXXXXXX-XXXC-TRLF
  - THE PART SHALL HAVE "FCI" ID AND CAVITY NUMBER SHOWN IN THE APPROXIMATE LOCATION
  - A SYMBOL WILL BE NEXT TO ANY DIMENSION, VIEW OR NOTE WHICH HAS BEEN MODIFIED WITH THE CURRENT DRAWING REVISION

	TITLE	SAS PLUG	DRG. NO.	10041724	REV.	H
	CATALOG NO.	VERTICAL SMT ASSY	CUSTOMER	sheet 3 of 3		

Copyright FCI.