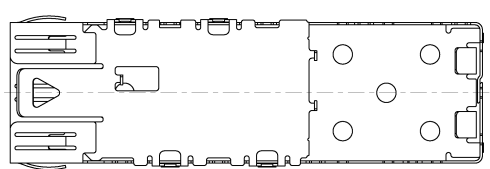
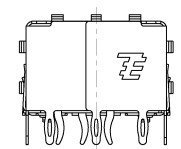
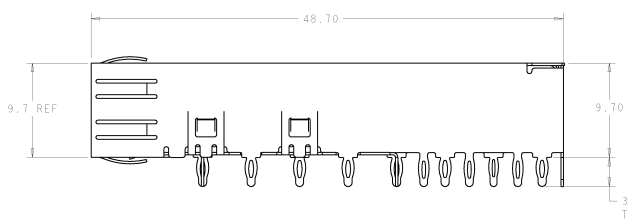
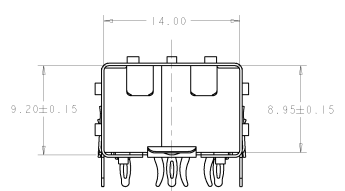
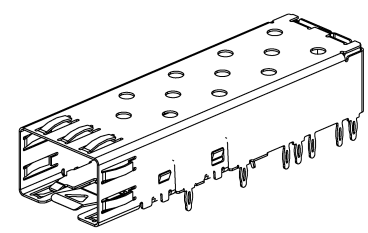
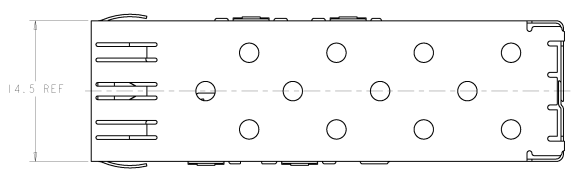


8	7	6	5	4	3	2	1
REVISED PER ECO-11-005027		REVISED PER ECO-11-005027		REVISED PER ECO-11-005027		REVISED PER ECO-11-005027	

REV	DATE	DESCRIPTION	BY	CHECKED
00	20APR11	REVIS PER ECO-11-005027	RK	HMR



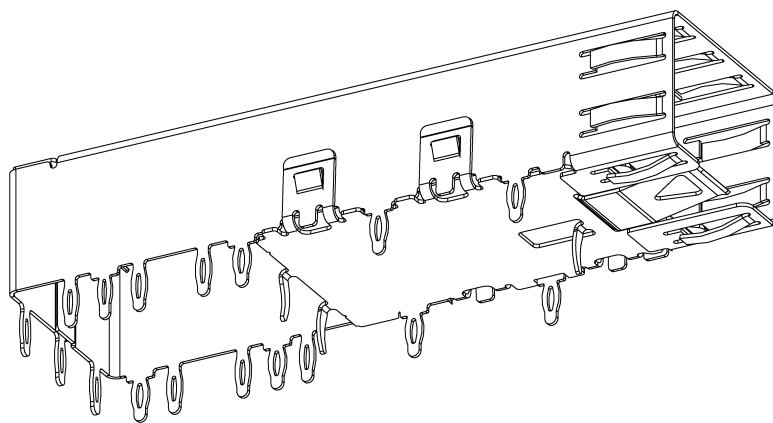
- ▲ MATERIAL: 0.25 THICK COPPER ALLOY.
- ▲ FINISH: TIN. NONPLATED EDGES PERMISSIBLE.
- 3. SFP MSA COMPATIBLE.
- ▲ PADS AND VIAS CHASSIS GROUND.
- ▲ DATUM AND BASIC DIMENSION ESTABLISHED BY CUSTOMER.
- 6. MINIMUM PC BOARD THICKNESS:  
SINGLE SIDED= 1.45  
DOUBLE SIDED STAGGERED= 3.00

AS SHOWN	1489779-1
DESCRIPTION	PART NUMBER

1489779-1 1489779-1 1489779-1		<b>STE</b> TE Connectivity CASE ASSEMBLY, 20 PRESS FIT, SFP
MATERIAL: FINISH:	CUSTOMER DRAWING	1489779-1

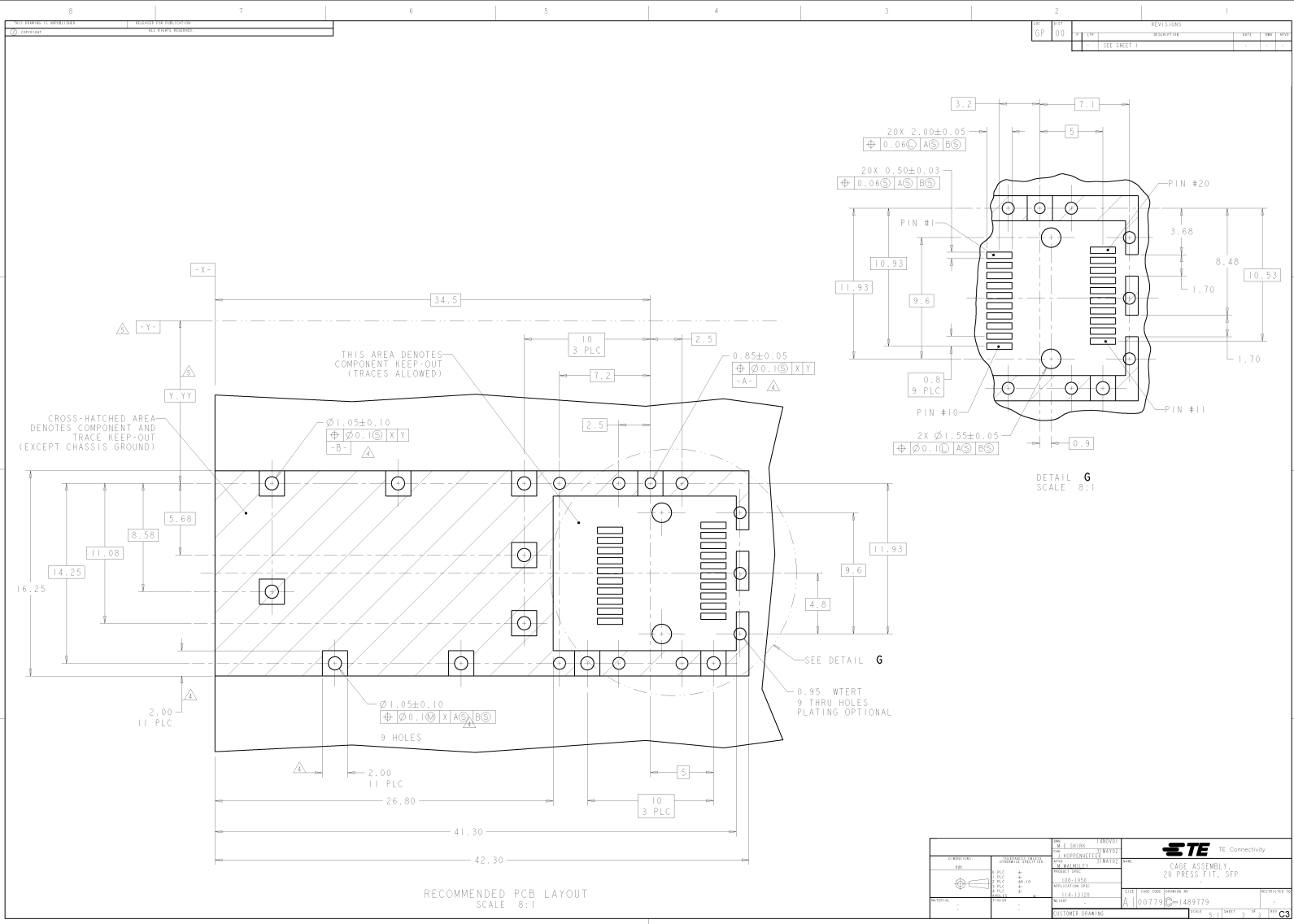
8	7	6	5	4	3	2	1
APPROVED FOR CONSTRUCTION	DESIGNED FOR CONSTRUCTION						
CS	CS						

REV	DATE	DESCRIPTION	BY	CHK	APP
00		SEE SHEET 1			



SCALE 8:1

PART NUMBER: 148979 REV: 00		DATE: 12/18/10 DRAWN BY: J. WILSON CHECKED BY: J. WILSON APPROVED BY: J. WILSON		<b>TE Connectivity</b> <b>TE</b> CASE ASSEMBLY, 20 PRESS FIT, SFP	
MATERIAL: 148979 FINISH: 148979		CUSTOMER DRAWING: 148979		PART NUMBER: 148979 REV: 00 DATE: 12/18/10 DRAWN BY: J. WILSON CHECKED BY: J. WILSON APPROVED BY: J. WILSON	



REV	DATE	DESCRIPTION	BY	CHK	APP
00	00	SEE SHEET 1			

PART NUMBER: <b>1489T9</b> REV: <b>00</b> DATE: <b>10/10/10</b> DRAWN BY: <b>114-13102</b> CHECKED BY: <b>114-13102</b> MATERIAL: <b>114-13102</b>	QUANTITY: <b>1489T9</b> PART NAME: <b>20 PRESS FIT, SFP</b> CUSTOMER DRAWING: <b>114-13102</b> DATE: <b>10/10/10</b> DRAWN BY: <b>114-13102</b> CHECKED BY: <b>114-13102</b>	<b>STE</b> TE Connectivity <b>CAGE ASSEMBLY, 20 PRESS FIT, SFP</b> PART: <b>1489T9</b> REV: <b>00</b> DATE: <b>10/10/10</b> DRAWN BY: <b>114-13102</b> CHECKED BY: <b>114-13102</b>
---	---	---