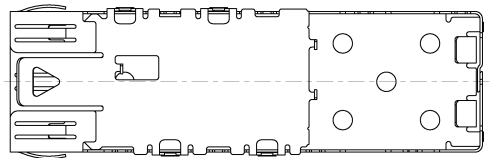
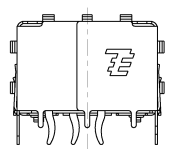
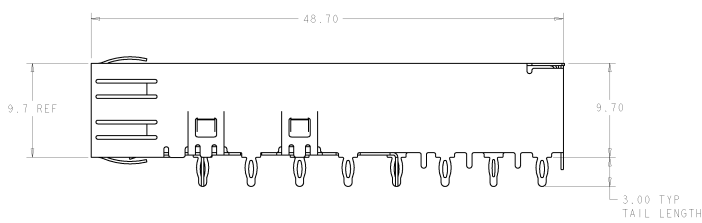
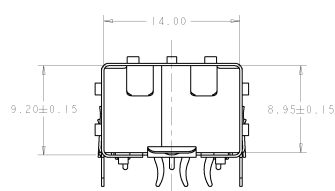
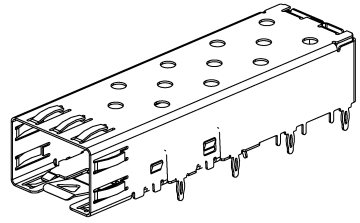
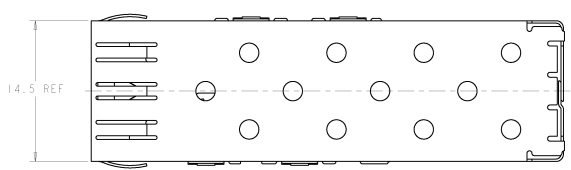


8	7	6	5	4	3	2	1
REVISED PER ECO-11-005027	REVISED PER ECO-11-005027						
CS	CS						

REV. NO.	DATE	DESCRIPTION	BY	CHECKED	APPROVED
00					
C3 REVISED PER ECO-11-005027					20APR11RK HMR



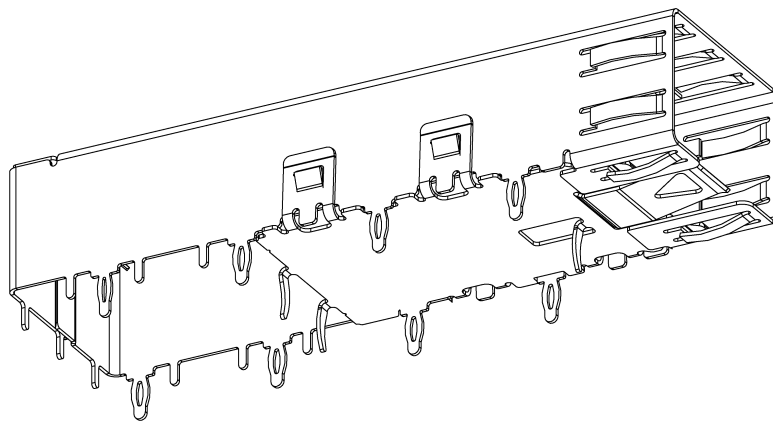
- △ MATERIAL: 0.25 THICK COPPER ALLOY.
- △ FINISH: TIN, NONPLATED EDGES PERMISSIBLE.
- 3. SFP MSA COMPATIBLE.
- △ PADS AND VIAS CHASSIS GROUND.
- △ DATUM AND BASIC DIMENSION ESTABLISHED BY CUSTOMER.
- 6. MINIMUM PC BOARD THICKNESS:  
SINGLE SIDED= 1.45  
DOUBLE SIDED= 3.00

AS SHOWN	1489669-1
DESCRIPTION	PART NUMBER

PART NUMBER: 1489669-1 MANUFACTURED QUANTITY: 10000 DATE: 10/10/11 MATERIAL: 0.25 THICK COPPER ALLOY FINISH: TIN TOLERANCE: ±0.10 CUSTOMER DRAWING:	ECO: 11-005027 APPROVED BY: HMR DATE: 10/10/11 PART NUMBER: 1489669-1 DESCRIPTION: CASE ASSEMBLY, 11 PRESS FIT, SFP MATERIAL: 0.25 THICK COPPER ALLOY FINISH: TIN TOLERANCE: ±0.10 CUSTOMER DRAWING:	<b>STE</b> TE Connectivity CASE ASSEMBLY, 11 PRESS FIT, SFP 1489669-1 00779 (2)=1489669
---	--	---

8	7	6	5	4	3	2	1
APPROVED FOR MANUFACTURE	DESIGNED FOR MANUFACTURE						
CS	BY						

REV	DATE	DESCRIPTION	BY	CHK	APP
00					
REV. 0001					
SEE SHEET 1					

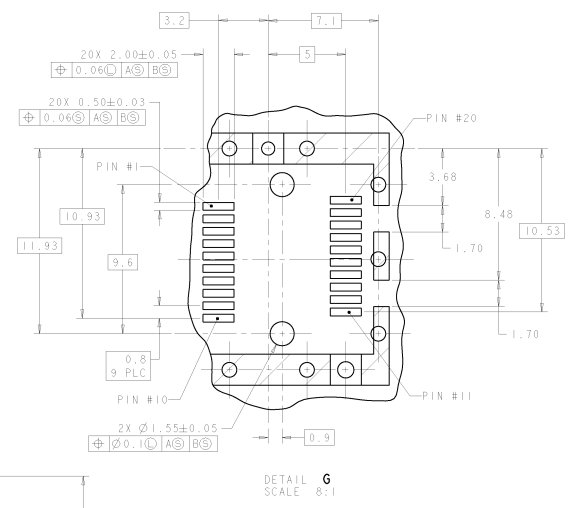
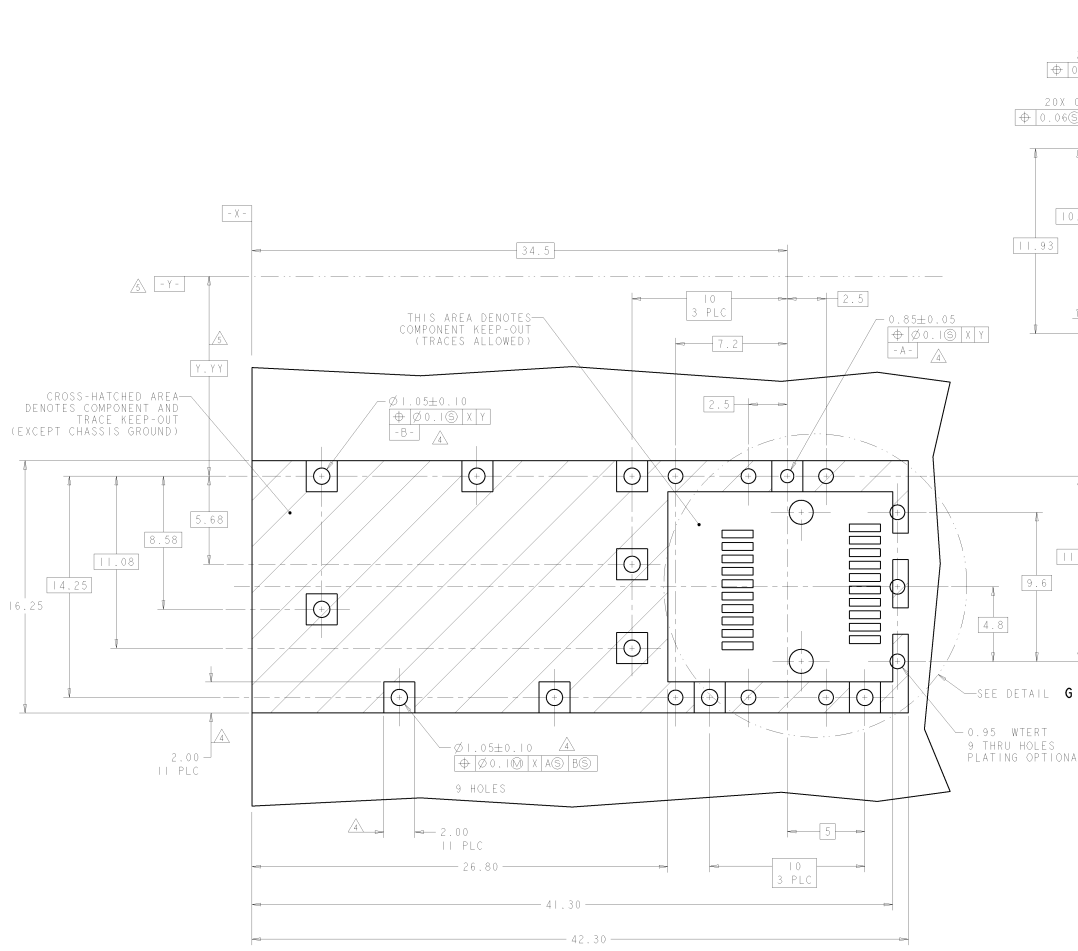


SCALE 8:1

PART NUMBER: 1118-1312 REV: 00		QTY: 1000 UNIT: PCS		DATE: 08/11/10 TIME: 10:00		DRAWN BY: J. J. J. CHECKED BY: J. J. J.		APPROVED BY: J. J. J.	
MATERIAL: 6061-T6 ALUMINUM FINISH: ANODIZED		WEIGHT: 0.1500 DIMENSIONS: 1.1875 X 0.5000 X 0.1250		PART NUMBER: 1118-1312 REV: 00		QTY: 1000 UNIT: PCS		DATE: 08/11/10 TIME: 10:00	
CUSTOMER DRAWING: YES		PART NUMBER: 1118-1312 REV: 00		QTY: 1000 UNIT: PCS		DATE: 08/11/10 TIME: 10:00		DRAWN BY: J. J. J. CHECKED BY: J. J. J.	



CAGE ASSEMBLY,  
11 PRESS FIT, SFP



RECOMMENDED PCB LAYOUT  
SCALE 8:1

<b>ST</b>	<b>TE Connectivity</b>	<b>11</b>	<b>11</b>	<b>11</b>	<b>11</b>
CAGE ASSEMBLY, 11 PRESS FIT, SFP		11-13112		11-13112	
CUSTOMER DRAWING		11-13112		11-13112	