



Connectivity Solutions

Complete or Partial Part #,
Competitor Part # or
Keywords.

Wireless

CATV

Audio & Video

Networking &
Structured Wiring

Military & Aerospace

Test & Measurement

[Home](#)[Member Access](#)[Products](#)[Connectors](#)[Microwave Components](#)[CATV Components](#)[Coaxial Cable Assemblies](#)[Structured Cabling & Connectors](#)[Tools & Accessories](#)[Customer Service](#)[Request For Quote](#)[Representatives](#)[Distributors](#)[Literature/Catalog Request](#)[What's New](#)[About Our Brands](#)[Legal Terms](#)

© 2007 All Rights Reserved

Product Detail



Product Line:	Johnson (Click for customer service)
Part Number:	108-0303-001
Description:	Banana Plug - Insulated Solderless Tapered Handle
Product Family:	BANANA PLUG
Body Material:	Brass per QQ-B-626D
Breakdown Voltage:	3500 Vrms min.
Color / Finish:	Black
Contact Finish:	Nickel
Contact Termination:	Solder
Current:	15 amps
Desc 2:	Tapered Handle
Description:	Insulated Solderless
For Use With:	.166 (4.23) Banana Jack
RoHS Compliant:	Yes

20070523-1523

Banana Plug - Insulated Solderless Tapered Handle

SPECIFICATIONS

Plug Body: Brass per QQ-B-626D

Plug Spring: Nickel silver per QQ-C-533

Finish: Nickel

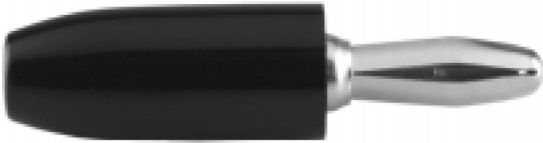
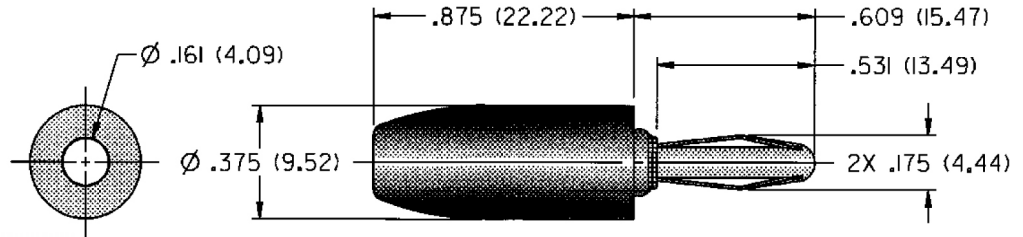
Insulated Handle: Nylon 6/6 per ASTM D4066

RATINGS

Current: 15 amps

Breakdown Voltage: 3500 Vrms minimum =

Contact Resistance: 0.010 ohms maximum



NICKEL PLATING
108-0303-001 Black

For Standard Banana Jack: .166 (4.23) Diameter

FEATURES:

- Fast solderless connection of up to 16 gauge wire
- Recessed plug body to limit shock hazard
- Nylon UL approved for self extinguishing