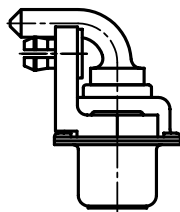
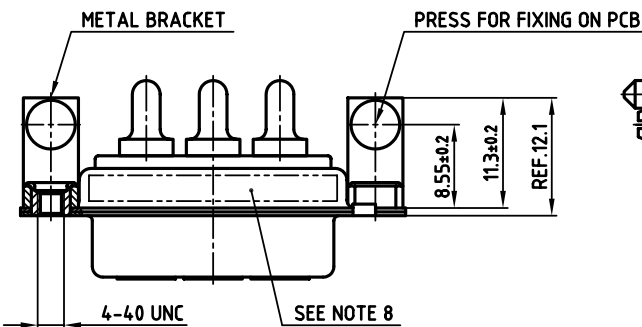
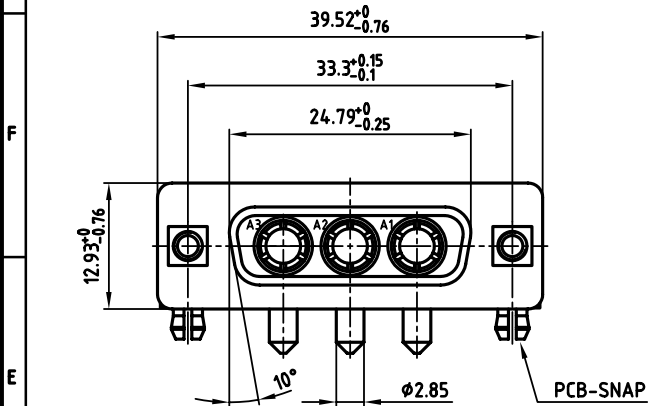
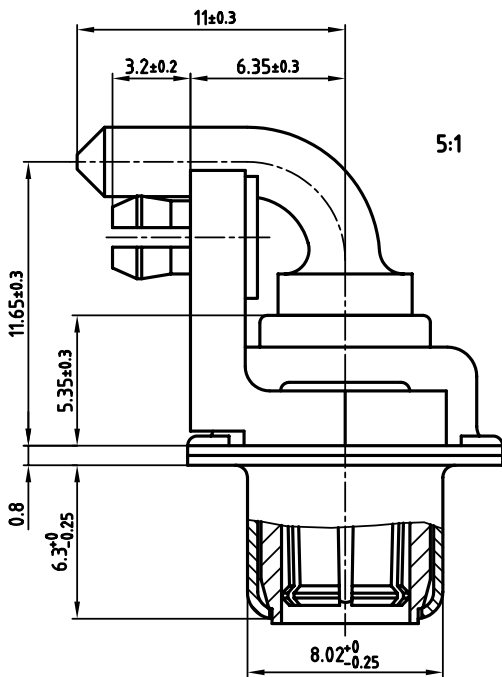
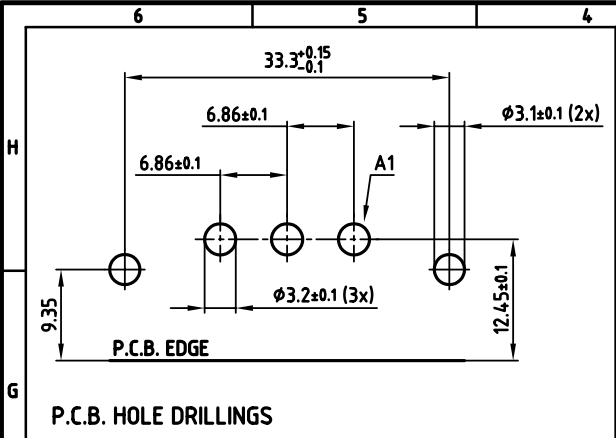


used for: D-SUB COMBINATION



NOTES:

- METALSHELLS: STEEL; min. 320μ " TIN
- INSULATORS: PBT GF UL 94 V-0, GREEN
- HIGH POWER CONTACTS 20A : COPPER ALLOY
PLATING: 30μ " HARD GOLD OVER min. 50μ " NICKEL
- METAL BRACKET: DIE-CASTING; min. 320μ " TIN over 80μ " NICKEL
- THREADED INSERT: COPPER ALLOY; min. 200μ " TIN over 80μ " NICKEL
- PCB-SNAP: COPPER ALLOY; min. 200μ " TIN over 80μ " NICKEL
PCB-HOLE: $\phi 3.1 \pm 0.1$; PCB THICKNESS 1.6mm
- MAXIMUM TORQUE VALUE FOR THREAD: 6" LBS
- CONNECTOR IS PART MARKED: 3003W3SXX56N40X CONEC ABC



APPROVAL # FREIGABE # DEBLOCAGE # AUTORIZACION # APPROVAL

CUSTOMER APPROVAL DATE:

NAME: TITLE:

COMPANY NAME:

APPROVAL # FREIGABE # DEBLOCAGE # AUTORIZACION # APPROVAL

THIS DRAWING MAY NOT BE COPIED OR REPRODUCED IN ANY WAY, AND MAY NOT BE PASSED ON TO A THIRD PARTY, WITHOUT WRITTEN PERMISSION. OWNERSHIP AND COPYRIGHT OF CONEC GmbH. DO NOT ALTER CAD DRAWING BY HAND

rev.	description	date	name
a	Origin		

tolerance	dim. in mm
2006	date
drawn	08.02. Lehmenkühler
appd.	08.02. Mickenbecker
norm	
d-old	

scale: 2:1 (5:1)
material: SEE NOTES

title: D-SUB COMBINATION FEMALE 90°
3W3S
with threaded insert, metal bracket and clip

dwg no: AutoCAD 2004 DIN-A
13K1A1708 3
sh: 1/1

part no: 3003W3SXX56N40X

