

**REFERENCE SPECIFICATIONS**

-NFC 93425 (in compliance with HE 507)

**PHYSICAL CHARACTERISTICS**

-INSULATOR MATERIAL: THERMOPLASTIC UL94V0  
 -CONTACT MATERIAL: PHOSPHOR BRONZE

-ACCESSORIES: BRASS  
 -SHELLS: STEEL

**ELECTRICAL CHARACTERISTICS**

-NOMINAL CURRENT: 7.5A  
 -CONTACT RESISTANCE: <= 7.3 m ohms  
 -CONTACT/CONTACT : >=1000 V  
 -CONTACT/GROUND : >=1200 V  
 -INSULATION RESISTANCE: >=5000 MOhms

**ENVIRONMENTAL CHARACTERISTICS**

- CLIMATIC CATEGORY: 55/125/21  
 TEMPERATURE RANGE -55°C TO +125°C  
 DAMP HEAT STEADY STATE 21 DAYS  
 SALT SPRAY 48 HOURS

**MECHANICAL CHARACTERISTICS**

- RETENTION AGAINST TORQUE: - Threaded insert: 0.7 N.m minimum  
 - Female screw : 0.5 N.m minimum

**NOTE RoHS INFORMATION**

- The "LF" products meet european union Directives and other country regulations as described in GS-22-008.
- Termination plating spec:  
 Ni + Gold
- Active area plating spec:  
 Ni + Gold
- Shell plating : 2 to 4µm Cu + Nickel + 3 to 10µm Sn.pure bright
- Accessories: Sn pure bright + nickel
- Packaging spec: See GS-14-920

# DBL13W3S043A00LF

Series

Shell size: **E A B C D**  
 see sheet 2

Front accessory definition  
 see sheet 2

- Blank** :without accessory
- L** :threaded insert M3
- O** :threaded insert UNC 4-40

Layout of contacts (see sheet 3)

Contacts

- S** :Socket

Plating

- Blank** signal solder bucket 200 matings/unmatings
- 043** signal solder bucket 500 matings/unmatings

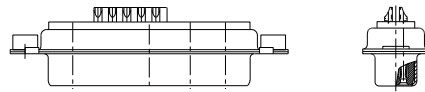
PCB accessory definition

- A** without accessory on PCB

Power contacts

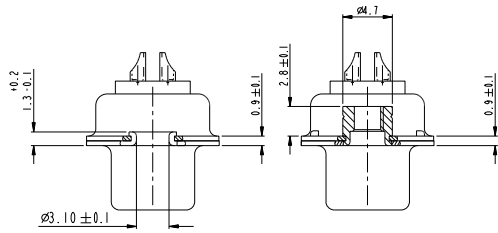
- 00** without power contact

See note RoHS



13W3 FOR EXAMPLE

www.fciconnect.com		surface	tolerance std	projection	mm
		150 1302	150 106 150 1101	⊕	
TOLERANCES UNLESS OTHERWISE SPECIFIED					
Dr	M PESSON	2005-10-11	ANGULAR	0.X	00.3 size
Eng	P LEGARE	2005-10-11	LINEAR	0.XX	00.1
Chr				0.XXX	00.05 ECN
Product family		- Spec.ref			
Rev.	ecn no	dr	date		
A	3305-0101	MPE	2005-10-11		
B	3308-0208	LSO	2006-12-12		
C	3307-0273	MPE	2007/10/31		
D	F10-0013	LSA	2010/07/20		
FCI		SUB FEMALE DW		0	Rev.
catalog no		mixed power+solder bucket		001-8639-2303	D
		CUSTOMER		sheet 1 of 7	



FRONT ACCESSORY	Blank	without	L	insert M3
			O	insert UNC 4.40
PCB ACCESSORIES	A	without	A	without

PART NUMBER	MATINGS/ UNMATINGS	FRONT ACCESSORY	PCB ACCESSORIES
D*xWxSA00LF	200	without	without
D*LxWxSA00LF	200	insert M3	without
D*OxWxSA00LF	200	insert UNC 4.40	without
D*xWxS043A00LF	500	without	without
D*LxWxS043A00LF	500	insert M3	without
D*OxWxS043A00LF	500	insert UNC 4.40	without

shell size	LAYOUTS
*	xWx
E	5W1
A	11W1
A	7W2
B	21W1
B	17W2
B	13W3
B	9W4
C	25W3
C	21WA4
C	27W2
D	47W1
D	24W7
D	36W4

Copyright FCJ

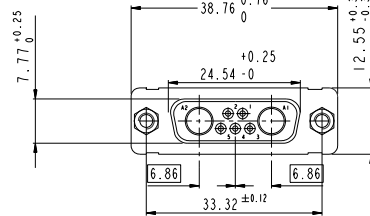
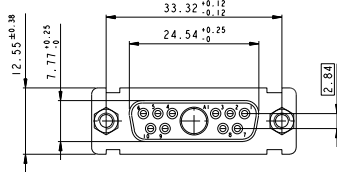
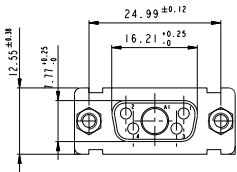
www.fcjconnect.com		surface <input checked="" type="checkbox"/> ISO 1302	tolerance std <input checked="" type="checkbox"/> ISO 1006 ISO 1101	projection	mm
		TOLERANCES UNLESS OTHERWISE SPECIFIED			
Dr M PESSON	2005-10-11	ANGULAR	0.1	±0.1	size A2
Eng P LEGARE	2005-10-11	LINEAR	0.xx	±0.1	Scale 2:1
Chr		0° ±0°	0.xxX	±0.05	ECN LS07-0273
Appr		Product family	- Spec ref		
	SUB FEMALE DW	colog no	001	C01-8639-2303	Rev. D
	mixed power+solder bucket			CUSTOMER	sheet 2 of 7

SCALE: 4

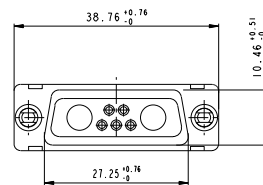
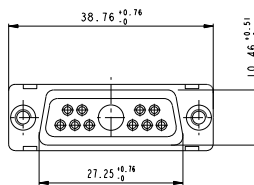
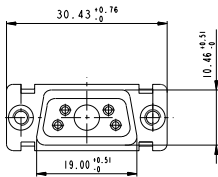
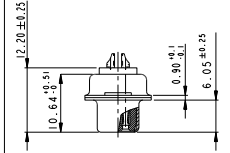
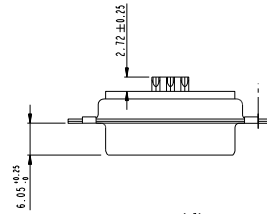
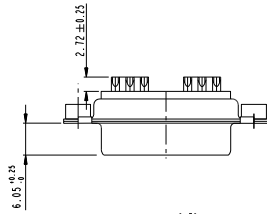
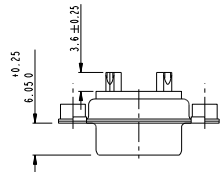
5W1

11W1

7W2



SIDE VIEW FOR LAYOUTS: E A B C



Floating signal contacts

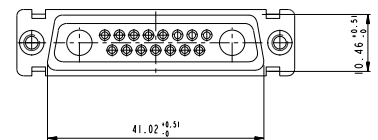
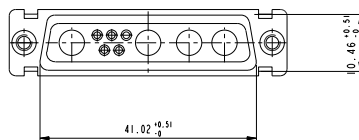
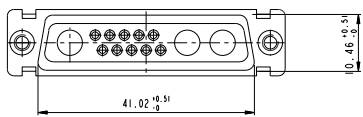
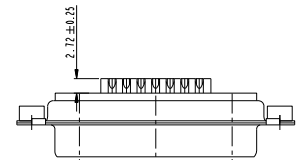
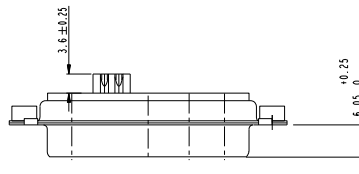
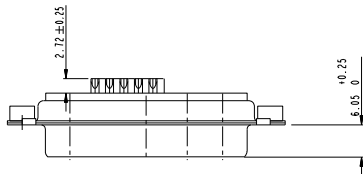
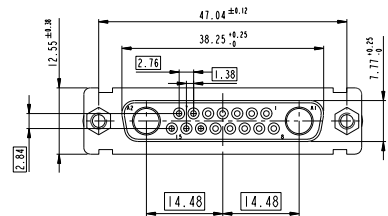
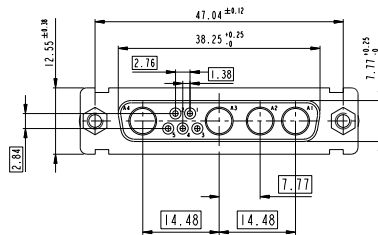
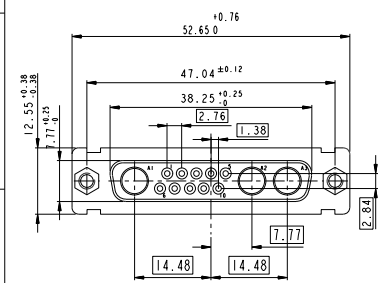
Copyright FCI

www.fciconnect.com		Surface 150 1502	Tolerance std 150 106 150 110	projection	mm
Dr M PESSON 2005-10-11		TOLERANCES UNLESS OTHERWISE SPECIFIED		0.1	0.1
Eng P LEGARE 2005-10-11	ANGULAR	LINEAR	0.1x	0.1	Scale 2:1
Chr	0°	±0°	0.1x	0.05	ECN LS07-0273
Appr	Product family		Spec ref		
FCI SUB FEMALE DW		0Wg	C01-8639-2303		Rev. D
mixed power+solder bucket		CUSTOMER		sheet 3 of 7	

13W3

9W4

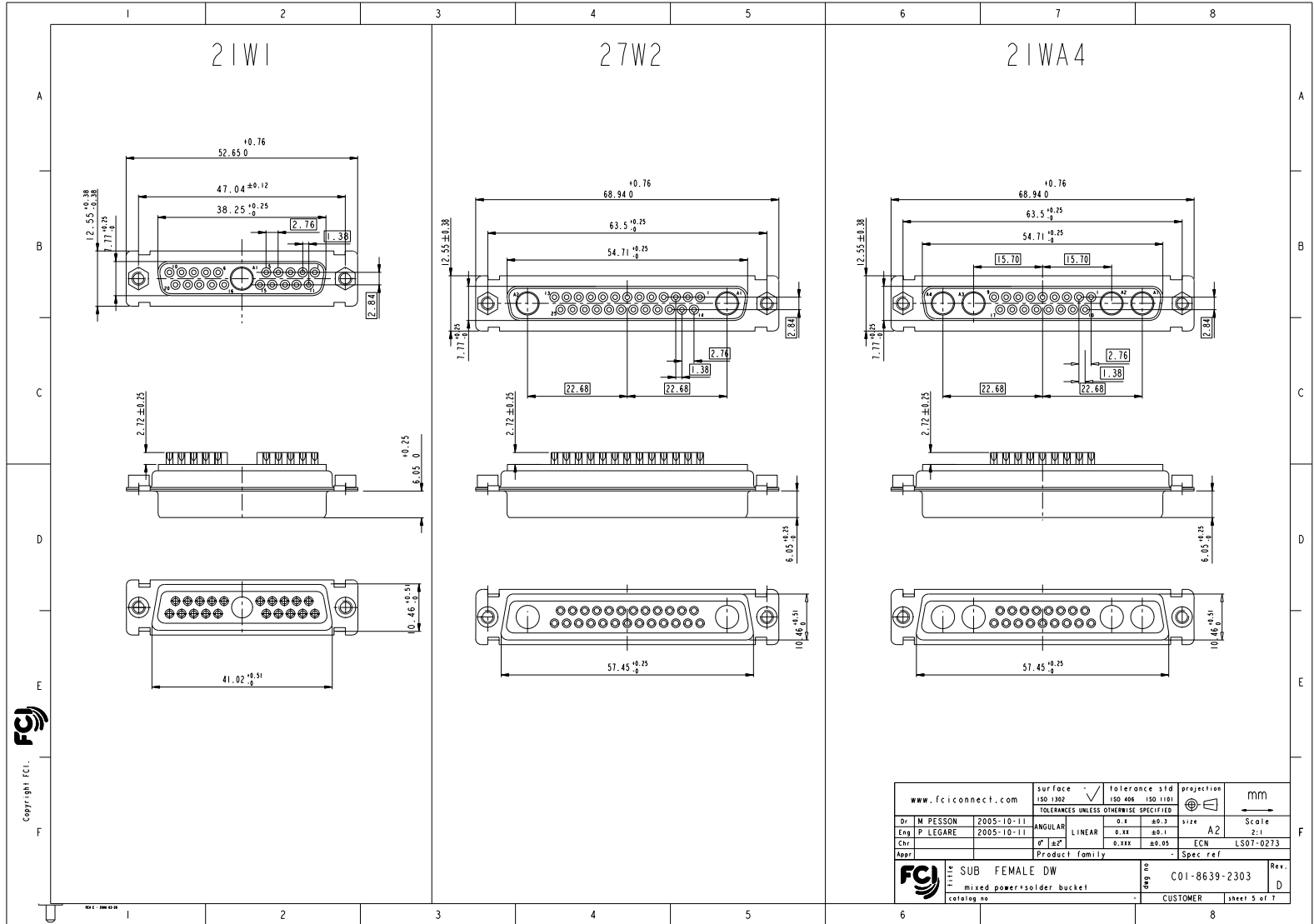
17W2



Floating signal contacts

Copyright FCi

www.fciconnect.com		Surface <input checked="" type="checkbox"/> 150 1502	Tolerance std <input checked="" type="checkbox"/> 150 1506 150 1101	projection <input checked="" type="checkbox"/>	mm
TOLERANCES UNLESS OTHERWISE SPECIFIED					
Dr M PESSON	2005-10-11	ANGULAR	0.1	±0.1	Scale 2:1
Eng P LEGARE	2005-10-11	LINEAR	0.xx	±0.1	A2
Chr		0°	±0°	±0.05	ECN LS07-0273
Appr		Product family		Spec ref	
	SUB FEMALE DW	colalog no		C01-8639-2303	Rev. D
	mixed power+solder bucket			CUSTOMER	sheet 4 of 7



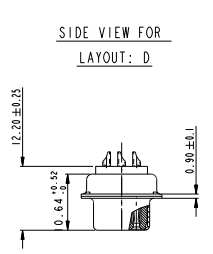
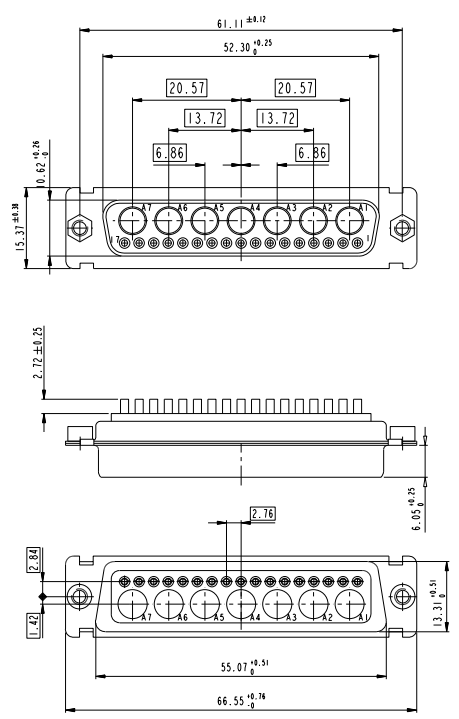
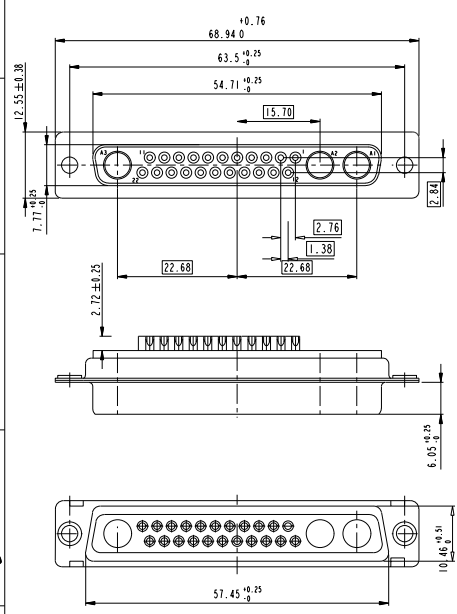
Copyright FCI  
FCI

www.fciconnect.com		surface	150 1302	tolerance std	150 106 150 1101	projection	1st angle	mm
		TOLERANCES UNLESS OTHERWISE SPECIFIED						
Dr	M PESSON	2005-10-11	ANGULAR	0.1	±0.1	1:xx	A2	Scale
Eng	P LEGARE	2005-10-11	LINEAR	0.xx	±0.1			2:1
Chr			0°	±0°	±0.05	ECN	LS07-0273	
Appr			Product family	- Spec ref				
FCI		SUB FEMALE DW		mixed power+solder bucket		C01-8639-2303		Rev. D
colalog no		CUSTOMER		sheet 5 of 7				

PDM: Rev:D STATUS Released Printed: Oct 01, 2010

25W3

24W7

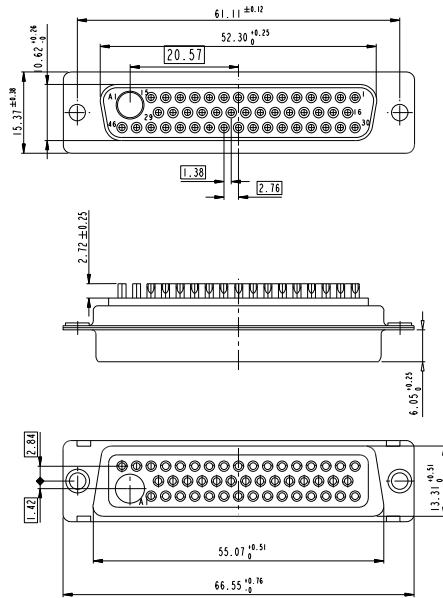
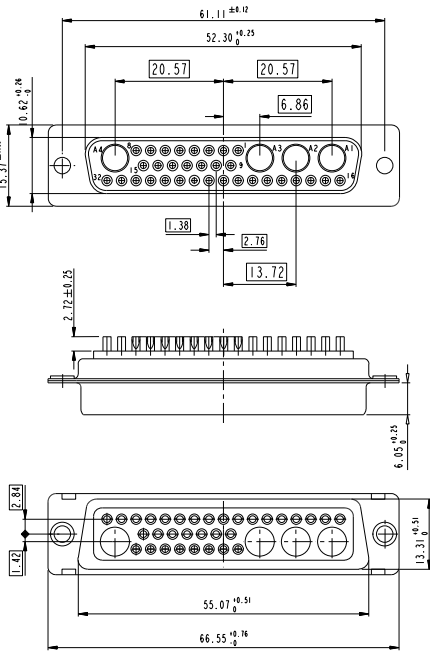


Copyright FCI

www.fciconnect.com		surface 150 1502	tolerance std 150 106 150 1101	projection	mm
Dr M PESSON 2005-10-11		TOLERANCES UNLESS OTHERWISE SPECIFIED		1:1	Scale 2:1
Eng P LEGARE 2005-10-11	ANGULAR	LINEAR	0.1 0.1	A2	LS07-0273
Chr	0° ±0°	0.15X ±0.05	ECN	Product family	Spec ref
Appr	FCI	SUB FEMALE DW	01	C01-8639-2303	Rev. D
		mixed power+solder bucket		CUSTOMER	sheet 6 of 7

36W4

47W1



Copyright FCi

www.fciconnect.com		surface	ISO 1302	tolerance std	ISO 1006 ISO 1101	projection	mm
Dr M PESSON 2005-10-11		TOLERANCES UNLESS OTHERWISE SPECIFIED					Scale
Eng P LEGARE 2005-10-11	ANGULAR	0.XX	±0.1	size	A2	2:1	
Chr	LINEAR	0.XXX	±0.05	ECN	LS07-0273		
Appr		Product family		Spec ref			
FCi		SUB FEMALE DW		part no	C01-8639-2303	Rev.	D
colalog no		mixed power+solder bucket		CUSTOMER		sheet 7 of 7	