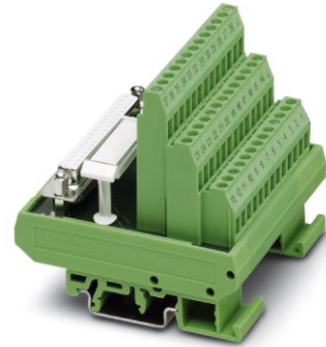


FLKMS-D37 SUB/B (1-37)

Order No.: 2294364



<http://eshop.phoenixcontact.de/phoenix/treeViewClick.do?UID=2294364>

VARIOFACE module, with screw connection and D-Subminiature socket strip, for mounting on NS 35/7.5 or NS 32, 37-pos.



Commercial data	
GTIN (EAN)	
sales group	I011
Pack	5 pcs.
Customs tariff	85369010
Catalog page information	Page 249 (IF-2007)

Product notes

WEEE/RoHS-compliant since:
03/31/2006

<http://www.download.phoenixcontact.com>
Please note that the data given here has been taken from the online catalog. For comprehensive information and data, please refer to the user documentation. The General Terms and Conditions of Use apply to Internet downloads.

Technical data	
General data	
Nominal voltage U_N	125 V AC/DC
Max. current carrying capacity per branch	2.5 A
Number of positions	37
Width	79 mm

Height	77 mm
Depth	72 mm
Status display	No
Ambient temperature (operation)	-20 °C ... 50 °C
Ambient temperature (storage/transport)	-20 °C ... 70 °C
Test voltage	800 V (50 Hz, 1 min.)
Mounting position	Any
Standards/regulations	IEC 60664
	DIN EN 50178
	IEC 62103
Pollution degree	2
Surge voltage category	II

Connection data

Connection 1	PCB connection
Connection in acc. with standard	IEC / EN
Connection method	Screw connection
Conductor cross section solid min.	0.2 mm ²
Conductor cross section solid max.	4 mm ²
Conductor cross section stranded min.	0.2 mm ²
Conductor cross section stranded max.	2.5 mm ²
Conductor cross section AWG/kcmil min.	24
Conductor cross section AWG/kcmil max	12
Stripping length	8 mm
Screw thread	M3
Connection 2	D-SUB connection
Connection method	Pluggable
Number of positions	40

Certificates / Approvals



Certification

GOST

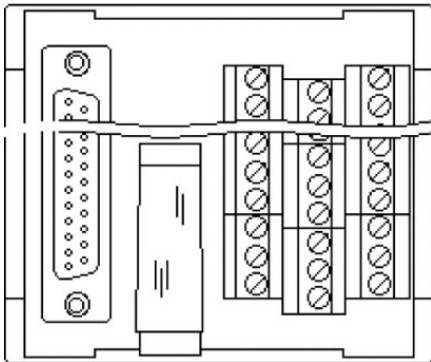
Accessories

Item	Designation	Description
Cable/conductor		
2302434	CABLE D-SUB-S-S-S/.../.../...	Shielded round cable, assembled with two D-SUB male connectors, variable cable length
2302340	CABLE D-SUB-S/.../.../...	Shielded round cable, assembled with one D-SUB male and one female connector, variable cable length
2302191	CABLE-D37SUB/B/S/ 50/ KONFEK/S	Round shielded cable set, with 37-pos. D-SUB female and male connectors, cable length: 0.5 m
2302201	CABLE-D37SUB/B/S/100/ KONFEK/S	Round shielded cable set, with 37-pos. D-SUB female and male connectors, cable length: 1 m
2302214	CABLE-D37SUB/B/S/150/ KONFEK/S	Round shielded cable set, with 37-pos. D-SUB female and male connectors, cable length: 1.5 m
2302227	CABLE-D37SUB/B/S/200/ KONFEK/S	Round shielded cable set, with 37-pos. D-SUB female and male connectors, cable length: 2 m
2302230	CABLE-D37SUB/B/S/300/ KONFEK/S	Round shielded cable set, with 37-pos. D-SUB female and male connectors, cable length: 3 m
2302243	CABLE-D37SUB/B/S/400/ KONFEK/S	Round shielded cable set, with 37-pos. D-SUB female and male connectors, cable length: 4 m
2302256	CABLE-D37SUB/B/S/600/ KONFEK/S	Round shielded cable set, with 37-pos. D-SUB female and male connectors, cable length: 6 m
General		
2900912	CABLE-D-37SUB-M-OE-0,25- S/...	Shielded cable with a 37-pos. D-SUB pin strip and one open end. The individual wires are labeled 1 to 37 and fitted with ferrules. The braided shield is routed to a separate cable end. Cable length: variable.
2926577	CABLE-D-37SUB/M/OE/0,25/ S/0,5M	Shielded cable with a 37-pos. D-SUB pin strip and one open end. The individual wires are labeled 1 to 37 and fitted with ferrules. The braided shield is routed to a separate cable end. Cable length: 0.5 m.
2926580	CABLE-D-37SUB/M/OE/0,25/ S/1,0M	Shielded cable with a 37-pos. D-SUB pin strip and one open end. The individual wires are labeled 1 to 37 and fitted with ferrules. The braided shield is routed to a separate cable end. Cable length: 1 m.
2926593	CABLE-D-37SUB/M/OE/0,25/ S/1,5M	Shielded cable with a 37-pos. D-SUB pin strip and one open end. The individual wires are labeled 1 to 37 and fitted with ferrules. The braided shield is routed to a separate cable end. Cable length: 1.5 m.
2926603	CABLE-D-37SUB/M/OE/0,25/ S/2,0M	Shielded cable with a 37-pos. D-SUB pin strip and one open end. The individual wires are labeled 1 to 37 and fitted with ferrules. The braided shield is routed to a separate cable end. Cable length: 2 m.

2926616	CABLE-D-37SUB/M/OE/0,25/S/3,0M	Shielded cable with a 37-pos. D-SUB pin strip and one open end. The individual wires are labeled 1 to 37 and fitted with ferrules. The braided shield is routed to a separate cable end. Cable length: 3 m.
2926629	CABLE-D-37SUB/M/OE/0,25/S/4,0M	Shielded cable with a 37-pos. D-SUB pin strip and one open end. The individual wires are labeled 1 to 37 and fitted with ferrules. The braided shield is routed to a separate cable end. Cable length: 4 m.
2926632	CABLE-D-37SUB/M/OE/0,25/S/6,0M	Shielded cable with a 37-pos. D-SUB pin strip and one open end. The individual wires are labeled 1 to 37 and fitted with ferrules. The braided shield is routed to a separate cable end. Cable length: 6 m.

Diagrams/Drawings

Schematic diagram



Address

PHOENIX CONTACT Inc., USA
586 Fulling Mill Road
Middletown, PA 17057, USA
Phone (800) 888-7388
Fax (717) 944-1625
<http://www.phoenixcon.com>



© 2011 Phoenix Contact
Technical modifications reserved;