

REFERENCE SPECIFICATIONS

-NFC 93425 (in compliance with HE 507)

PHYSICAL CHARACTERISTICS

-INSULATOR MATERIAL: THERMOPLASTIC UL94 V-0
 -ACCESSORIES: STAINLESS STEEL or BRASS, cadmium plated yellow passivation
 -SHELLS: STEEL, cadmium plated yellow passivation

ELECTRICAL CHARACTERISTICS

-CONTACT/CONTACT : >>1000 V
 -CONTACT/GROUND : >>1200 V
 -INSULATION RESISTANCE: >>5000 MOhms

ENVIRONMENTAL CHARACTERISTICS

- CLIMATIC CATEGORY: 55/125/56
 TEMPERATURE RANGE -55°C TO +125°C
 DAMP HEAT STEADY STATE 56 DAYS
 SALT SPRAY 48 HOURS

DBMF5W5SN

Series

Shell size: **E A B C**
 see sheet 2

Front accessory definition
 see sheet 2

- Blank** :without accessory
- L** :threaded insert M3
- O** :threaded insert UNC 4-40
- V** :female screw UNC 4-40
- I** :female screw M3
- F** :floating mounting

Contacts
 Layout of contacts (see sheet 3)

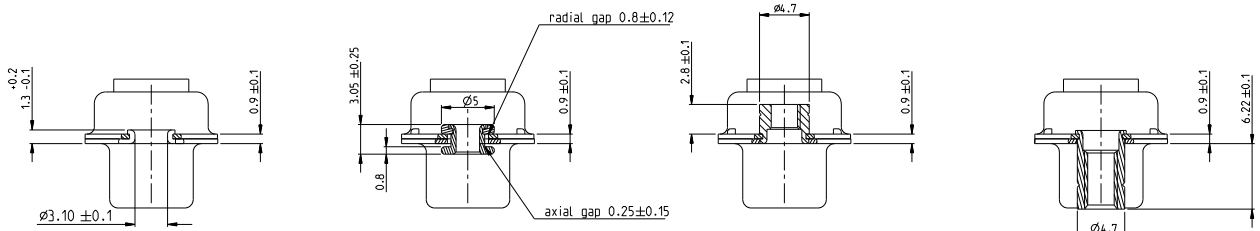
- S** :Socket
- N** :mandatory indication for HE 507 series



Rev	ech no	dr	date
A	S306-0774	MPG	2006/11/14
B	S307-0273	MPG	2007/02/10
C	F10-0072	LSA	2010/07/20
-	-	-	-
-	-	-	-
-	-	-	-

www.fciconnect.com		Surface ISO 1802	tolerance std ISO 1106 ISO 1101	projection ASME Y14.5	mm
Dr M PESSON 2006/11/14		ANGULAR	TOLERANCES UNLESS OTHERWISE SPECIFIED		
Eng P LEGARE 2006/11/14	Chr P LEGARE 2006/11/14	LINEAR	0.xx	0.1	size A2 Scale 2:1
Appr P LEGARE 2006/11/14	Product family	0.xxx	0.05	ECN	F10-0072
FCJ SUB FEMALE DMW		full power without contact		C01-8637-1731	Rev. C
catalog no		CUSTOMER		sheet 1 of 4	

Copyright FCJ



FRONT ACCESSORY	Blank without	F Floating mounting	L insert M3 O insert UNC 4.40	V Female screw UNC 4.40 I Female screw M3
-----------------	----------------------	----------------------------	--	--

PART NUMBER	FRONT ACCESSORY
D*M*W*SN	without
D*ML*W*SN	insert M3
D*MO*W*SN	insert UNC 4-40
D*MV*W*SN	female screw UNC 4-40
D*MI*W*SN	female screw M3
D*MF*W*SN	floating mounting

shell size	LAYOUTS
*	xW x
E	2V2
A	3V3
A	3W3
B	5W5
C	8W8

Copyright FCI.
FCI

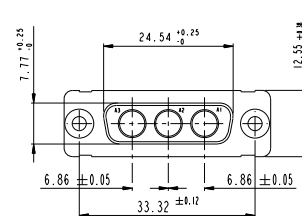
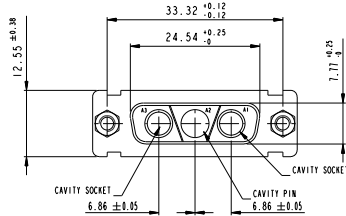
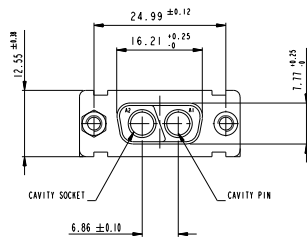
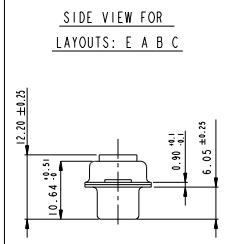
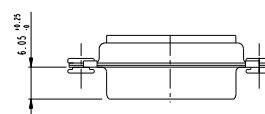
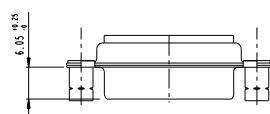
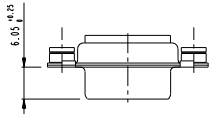
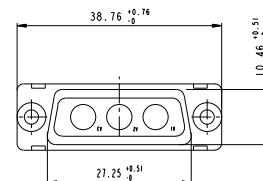
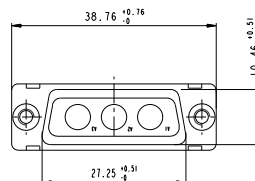
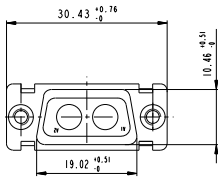
www.fciconnect.com		surface ISO 1902	-	tolerance std ISO 1906	projection ISO 1901	mm
TOLERANCES UNLESS OTHERWISE SPECIFIED						
Dr	M PESSON	2006/11/14	ANGULAR	0.x	0.1	size
Eng	P LEGARE	2006/11/14	LINEAR	0.xx	0.1	A2
Chr	P LEGARE	2006/11/14	0° ±2°	0.xxx	0.05	ECN
Appr	P LEGARE	2006/11/14	Product family	-	Spec ref	F10-0072
FCI SUB FEMALE DMW		full power without contact		C01-8637-1731		Rev.
catalog no		CUSTOMER		sheet 2 of 4		C

SCALE: 4

2V2

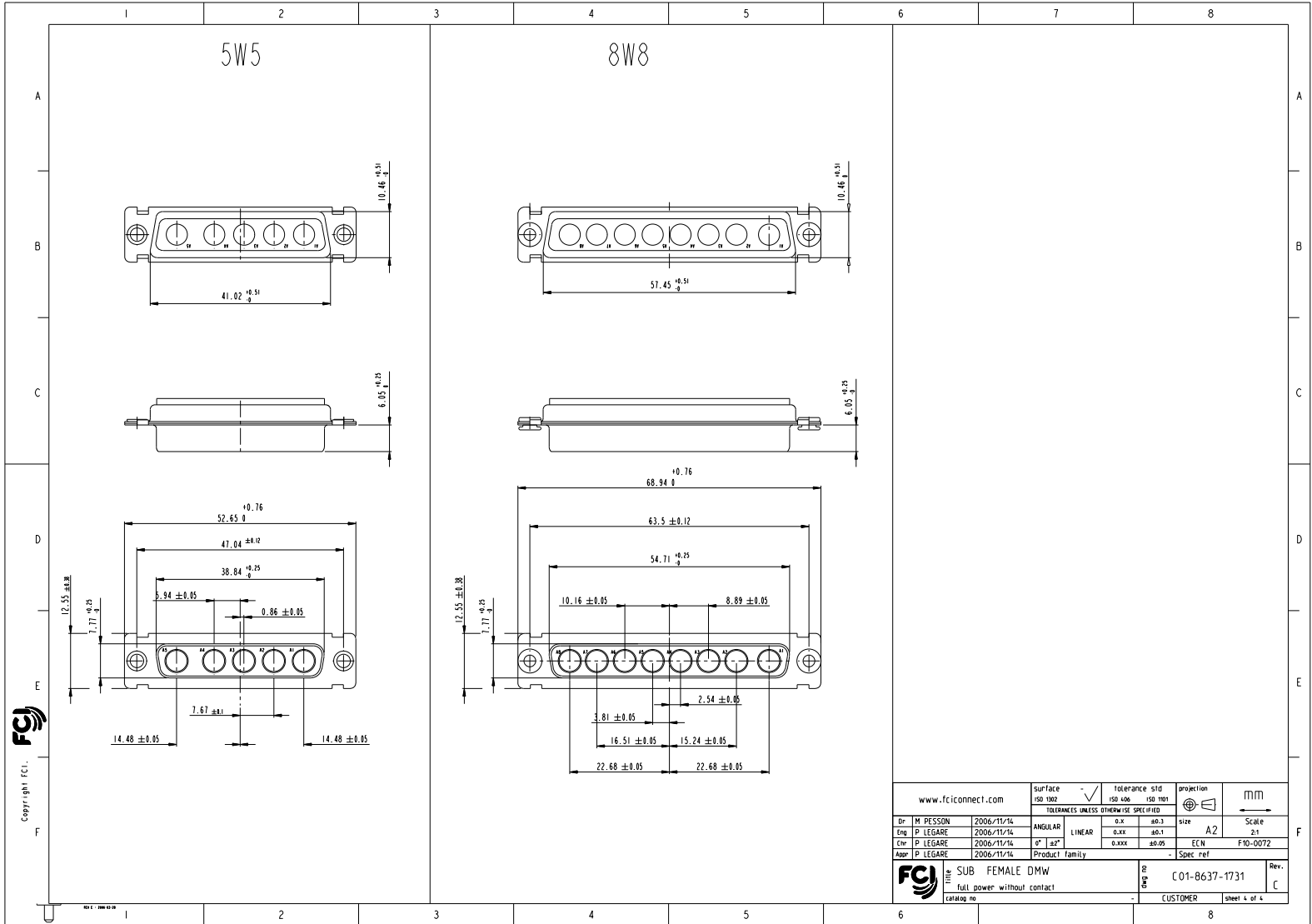
3V3

3W3



Copyright FCJ

www.fcjconnect.com		Surface ISO 1902	tolerance std ISO 1906	projection ISO 1901	mm
		TOLERANCES UNLESS OTHERWISE SPECIFIED			
Dr	M PESSON	2006/11/14	ANGULAR	0.x	0.1
Eng	P LEGARE	2006/11/14	LINEAR	0.xxx	0.05
Chr	P LEGARE	2006/11/14	0°	0.xxx	0.05
Appr	P LEGARE	2006/11/14	Product family	-	Spec. ref
SUB FEMALE DMW full power without contact catalog no				C01-8637-1731 CUSTOMER	Rev. C



Copyright FCJ

www.fciconnect.com		Surface ISO 1302	tolerance std ISO 1306 ISO 1101	projection	mm
		TOLERANCES UNLESS OTHERWISE SPECIFIED			
Dr	M PESSON	2006/11/14	ANGULAR	0.x	0.1
Eng	P LEGARE	2006/11/14	LINEAR	0.xxx	0.1
Chr	P LEGARE	2006/11/14	0° ± 2°	0.xxx	0.05
Appr	P LEGARE	2006/11/14	Product family	-	Spec. ref
SUB FEMALE DMW full power without contact				C01-8637-1731	Rev. C
catalog no				CUSTOMER	sheet 4 of 4

PDM: Rev:C STATUS: Released Printed: Oct 01, 2010