

REFERENCE SPECIFICATIONS

-NFC 93425 (in compliance with HE 507)

PHYSICAL CHARACTERISTICS

-INSULATOR MATERIAL: THERMOPLASTIC UL94 V-0
 -ACCESSORIES: STAINLESS STEEL or BRASS, cadmium plated yellow passivation
 -SHELLS: STEEL, cadmium plated yellow passivation

ELECTRICAL CHARACTERISTICS

-CONTACT/CONTACT : >=1000 V
 -CONTACT/GROUND : >=1200 V
 -INSULATION RESISTANCE: >=5000 MOhms

ENVIRONMENTAL CHARACTERISTICS

- CLIMATIC CATEGORY: 55/125/56
 TEMPERATURE RANGE -55°C TO +125°C
 DAMP HEAT STEADY STATE 56 DAYS
 SALT SPRAY 48 HOURS

DBMF5W5PN

Series

Shell size: **E A B C**
 see sheet 2

Front accessory definition
 see sheet 2

- Blank** :without accessory
- L** :threaded insert M3
- O** :threaded insert UNC 4-40
- V** :female screw UNC 4-40
- I** :female screw M3
- F** :floating mounting

Contacts

Layout of contacts (see sheet 3)

P :Pin

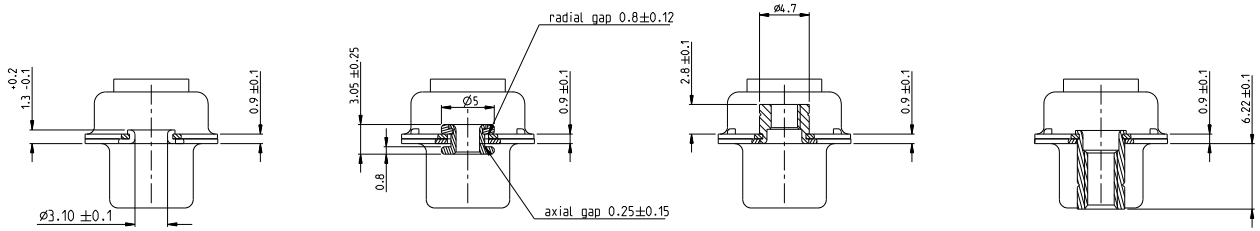
N :mandatoy indication for HE 507 series



Copyright FCJ

Rev	tech no	dr	date
A	S306-0774	MLE	2006/11/14
B	S307-0273	MLE	2007/10/10
C	F10-0072	LSA	2010/07/20
-	-	-	-
-	-	-	-
-	-	-	-

www.fcjconnect.com		Surface ISO 1302	tolerance std ISO 1306 ISO 1101	projection	mm
Dr M PESSON 2006/11/14		TOLERANCES UNLESS OTHERWISE SPECIFIED		size A2	Scale 2:1
Eng P LEGARE 2006/11/14	ANGLAR	0.xx	0.1	ECN	F10-0072
Chr P LEGARE 2006/11/14	LINEAR	0.xxx	0.05	Spec ref	
Appr P LEGARE 2006/11/14	Product family				
FCJ SUB MALE DMW		C01-8637-1732		Rev.	C
full power without contact		CUSTOMER		sheet 1 of 4	



FRONT ACCESSORY **Blank** without **F** Floating mounting **L** insert M3 **V** Female screw UNC 4.40
O insert UNC 4.40 **I** Female screw M3

PART NUMBER	FRONT ACCESSORY
D*M*W*PN	without
D*ML*W*PN	insert M3
D*MO*W*PN	insert UNC 4-40
D*MV*W*PN	female screw UNC 4-40
D*MI*W*PN	female screw M3
D*MF*W*PN	floating mounting

shell size LAYOUTS

*	xW x
E	2V2
A	3V3
A	3W3
B	5W5
C	8W8

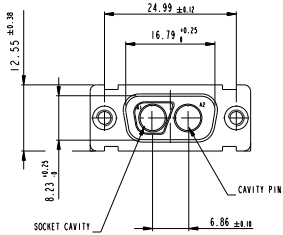
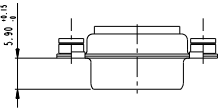
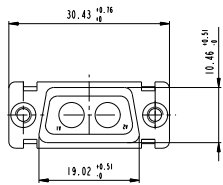
Copyright FCI
FCI

www.fciconnect.com		Surface ISO 1902	tolerance std ISO 1906 ISO 1901	projection ASME Y14.5	mm
		TOLERANCES UNLESS OTHERWISE SPECIFIED			
Dr	M PESSON	2006/11/14	ANGULAR	0.x	0.1
Eng	P LEGARE	2006/11/14	LINEAR	0.xxx	0.1
Chr	P LEGARE	2006/11/14	0° 12°	0.xxx	0.05
Appr	P LEGARE	2006/11/14	Product family	-	Spec. ref
SUB MALE DMW full power without contact catalog no		C01-8637-1732 CUSTOMER		Rev. C	sheet 2 of 4

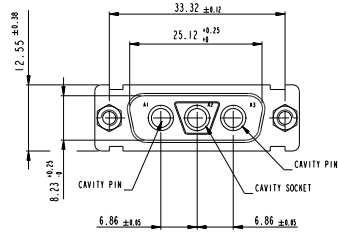
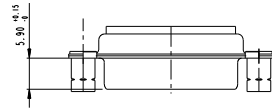
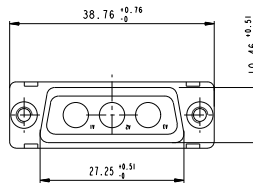
SCALE: 4

PDM: Rev:C STATUS: Released Printed: Oct 01, 2010

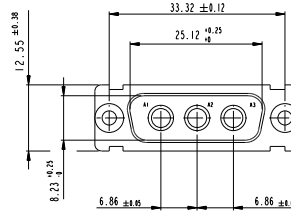
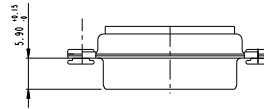
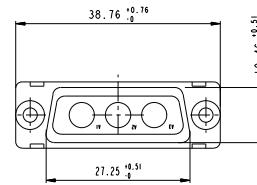
2V2



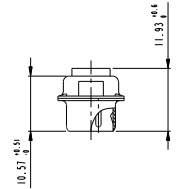
3V3



3W3



SIDE VIEW FOR LAYOUTS: E A B C

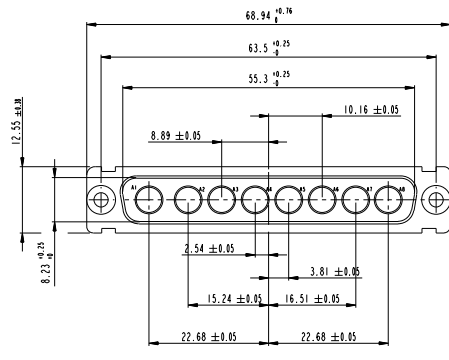
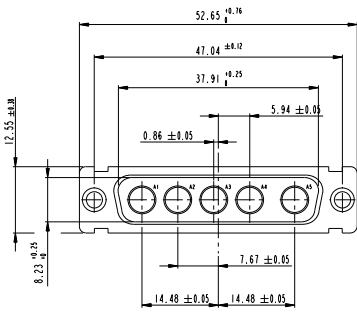
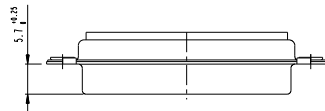
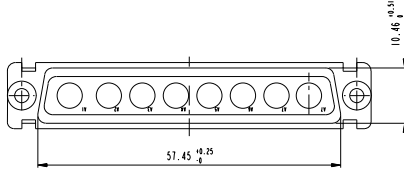
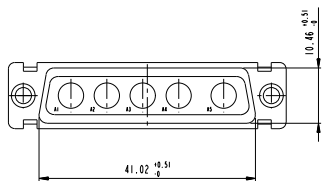


Copyright FCJ

www.fciconnect.com		Surface ISO 1902	Tolerance std ISO 1906	projection ISO 1901	mm
		TOLERANCES UNLESS OTHERWISE SPECIFIED			
Dr	M PESSON	2006/11/14	ANGULAR	0.x	0.1
Eng	P LEGARE	2006/11/14	LINEAR	0.xx	0.1
Chr	P LEGARE	2006/11/14	0°	0.xxx	0.05
Appr	P LEGARE	2006/11/14	Product family		ECN
				Spec ref	
SUB MALE DMW full power without contact catalog no				C01-8637-1732 CUSTOMER	Rev. C
				sheet 3 of 4	

5W5

8W8



Copyright FCJ

www.fciconnect.com		Surface ISO 1302	tolerance std ISO 1106 ISO 1101	projection ISO 1101	mm
		TOLERANCES UNLESS OTHERWISE SPECIFIED			
Dr	M PESSON	2006/11/14	ANGULAR	0.xx	0.1
Eng	P LEGARE	2006/11/14	LINEAR	0.xxx	0.05
Chr	P LEGARE	2006/11/14	0°	±2°	ECN
Appr	P LEGARE	2006/11/14	Product family	-	Spec. ref
FCJ		SUB MALE DMW full power without contact		01-01	C01-8637-1732
catalog no		CUSTOMER		Rev. C	