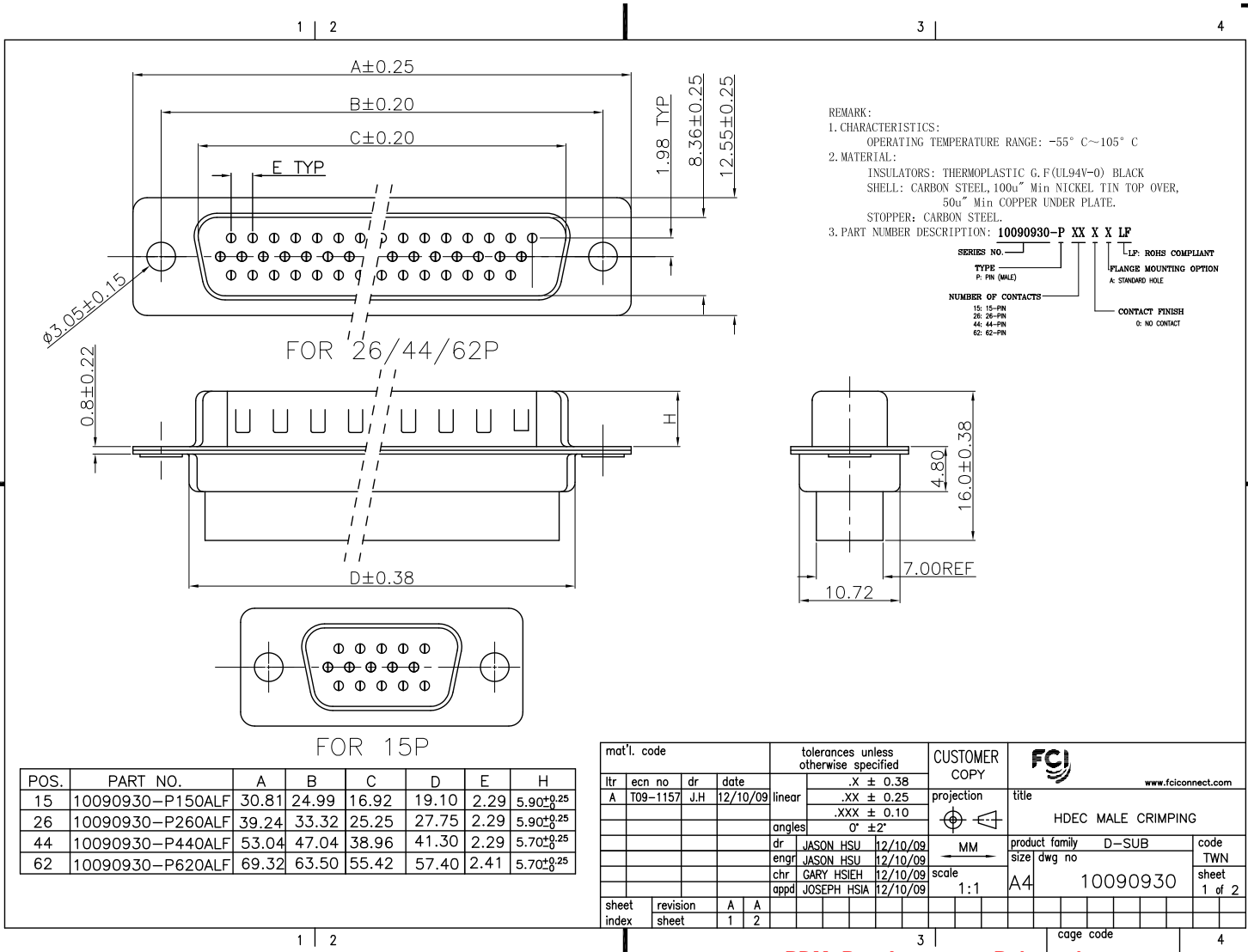


Tous droits strictement réservés. Reproduction ou communication à des tiers interdite sous quelque forme que ce soit sans autorisation écrite du propriétaire. Property of FCI. Droits de reproduction FCI.



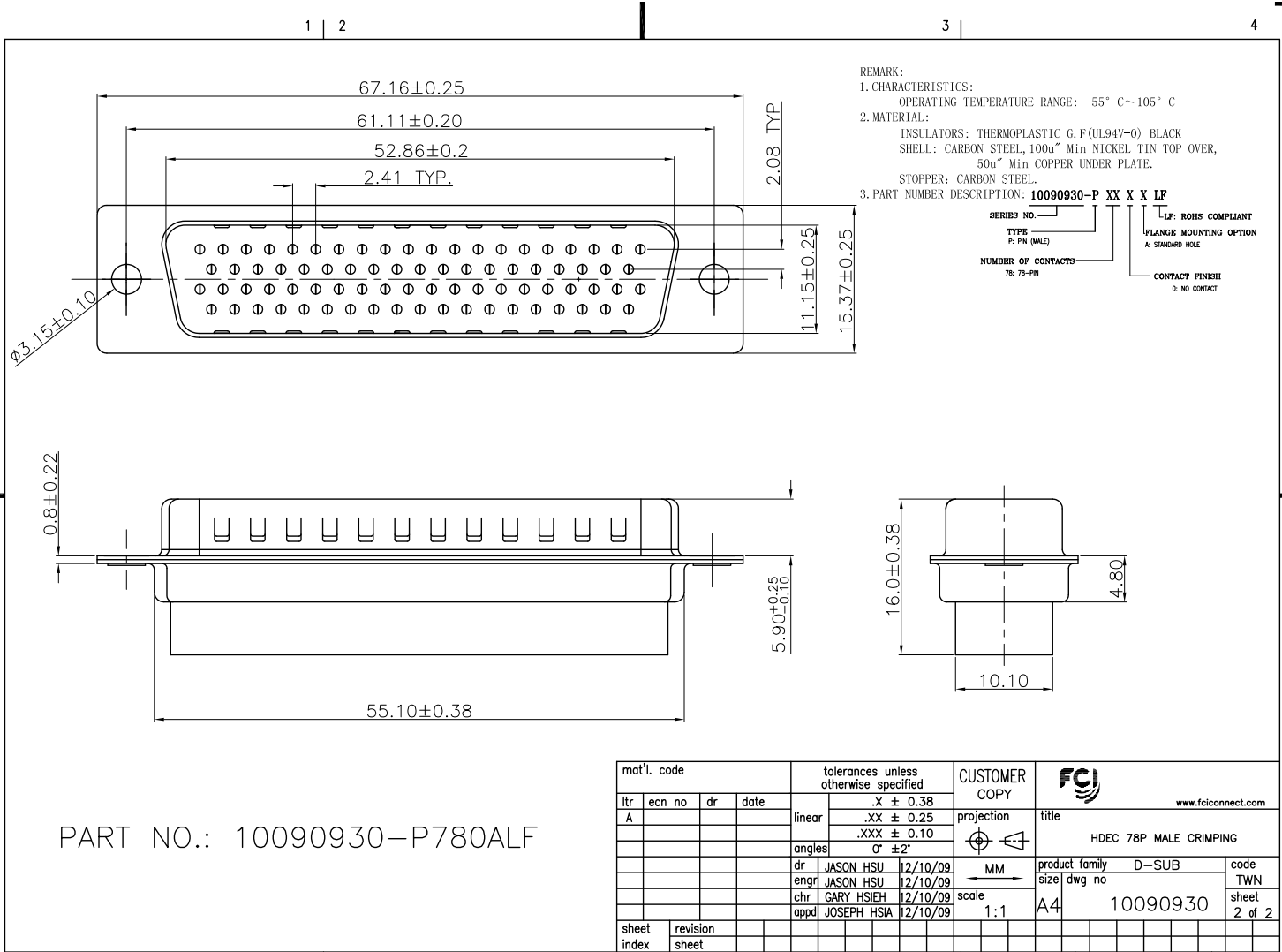
All rights strictly reserved. Reproduction or issue to third parties in any form whatever is not permitted without written authority from the proprietor. Property of FCI. Copyright FCI.



Tous droits strictement réservés. Reproduction ou communication a des tiers interdite sous quelque forme que ce soit sans autorisation écrite du propriétaire. Property of FCJ. Droits de reproduction FCJ.



All rights strictly reserved. Reproduction or issue to third parties in any form whatever is not permitted without written authority from the proprietor. Property of FCJ. Copyright FCJ.



REMARK:
1. CHARACTERISTICS:
OPERATING TEMPERATURE RANGE: -55° C~105° C
2. MATERIAL:
INSULATORS: THERMOPLASTIC G. F (UL94V-0) BLACK
SHELL: CARBON STEEL, 100u" Min NICKEL TIN TOP OVER,
50u" Min COPPER UNDER PLATE.
STOPPER: CARBON STEEL.
3. PART NUMBER DESCRIPTION: **10090930-P XX X X LF**

SERIES NO. _____
TYPE _____
P: PIN (MALE)
NUMBER OF CONTACTS: 78: 78-PIN

LF: ROHS COMPLIANT
FLANGE MOUNTING OPTION
A: STANDARD HOLE
CONTACT FINISH
Ø: NO CONTACT

mat'l. code				tolerances unless otherwise specified				CUSTOMER COPY		FCJ		www.fcjconnect.com	
ltr	ecn no	dr	date	linear	.X ± 0.38	projection	title						
A					.XX ± 0.25		HDEC 78P MALE CRIMPING						
				angles	.XXX ± 0.10			product family	D-SUB	code			
				dr	0° ±2°	MM	size	dwg no	TWN				
				enrg	JASON HSU 12/10/09	scale	1:1	10090930	sheet				
				chr	GARY HSIEH 12/10/09				2 of 2				
				appd	JOSEPH HSIA 12/10/09								
sheet index	revision sheet							cage code					

ACAD **PDM: Rev:A** STATUS: **Released** Printed: Dec 24, 2009