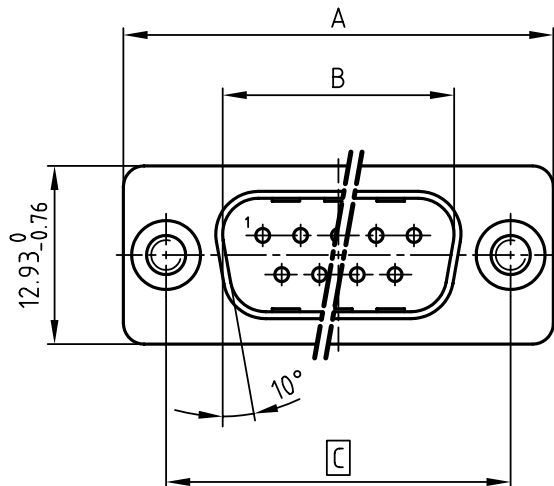
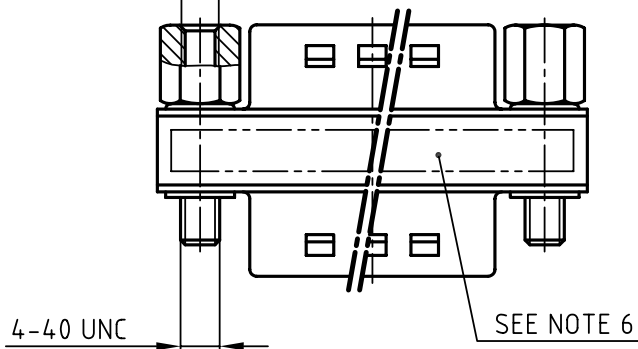


used for: D-SUB

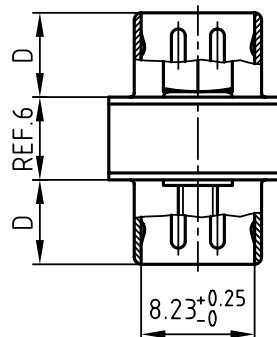


POS.	A <sup>-0.76</sup>	B <sup>+0.25</sup>	C	D <sup>-0.3</sup>	Part NO.
9	31.19	16.79	25.00 <sup>+0.12</sup> / <sub>-0.13</sub>	6.12	320X12509X
15	39.52	25.12	33.30 <sup>+0.15</sup> / <sub>-0.1</sub>	6.12	320X12529X
25	53.42	38.84	47.04 ±0.13	5.99	320X10549X
37	69.70	55.30	63.50 ±0.13	5.99	320X12549X

4-40 UNC



4-40 UNC



**NOTES:**

1. METALSHELLS: STEEL; min. 320µ" TIN
2. INSULATORS: PBT GF UL 94 V-0, BLUE (b)
3. CONTACTS: COPPER ALLOY
4. PLATING: HARD GOLD OVER NICKEL
5. MAXIMUM TORQUE VALUE FOR THREAD: 6" LBS
6. CONNECTOR IS PART MARKED: PART-NO. CONEC Y/WW
7.  = CRITICAL DIMENSION

THIS DRAWING MAY NOT BE COPIED OR REPRODUCED IN ANY WAY, AND MAY NOT BE PASSED ON TO A THIRD PARTY WITHOUT WRITTEN PERMISSION.  
 OWNERSHIP AND COPYRIGHT OF CONEC GmbH  
 DO NOT ALTER CAD DRAWING BY HAND

tolerance				scale: 2:1	
				material: SEE NOTES	
	2002	date	name	title: <b>GENDER CHANGER</b> 2 x plug connector 9-37pos.	
	drawn	30.04.	Parei		
	appd.	30.04.	E. Mickenbecker		
	norm	DIN 41652			
	d-old			dwg no: AutoCAD 2000 DIN-A	
1 x b	Ä 2202	07.04.2005	HS	16K1A557	
rev.	description	date	name	part no: SEE TABLE	



DIN-A  
4  
sh: 1/1