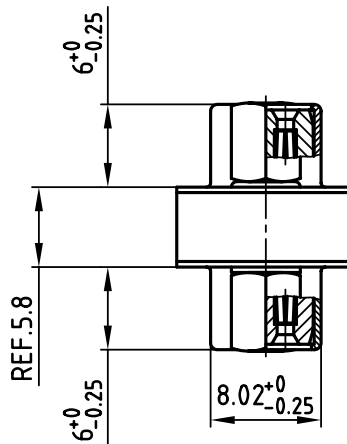
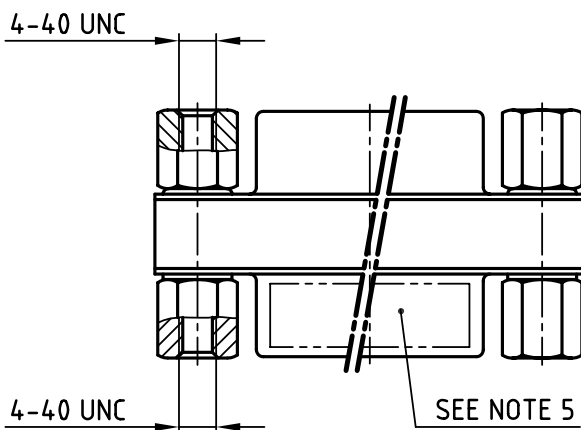
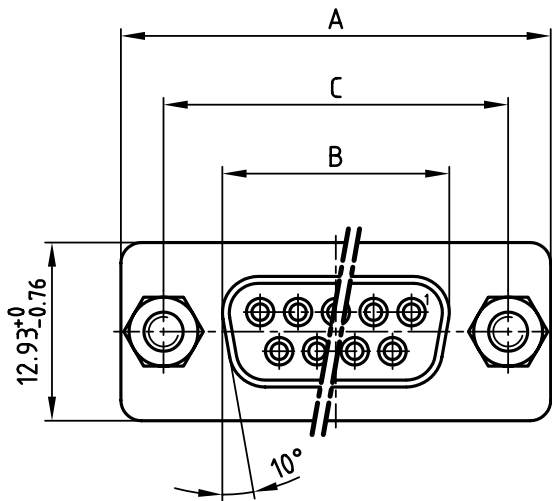


used for: D-SUB

POS.	A -0.76	B -0.25	C	Part-No.
9	31.19	16.46	25.00 <sup>+0.12</sup> / <sub>-0.13</sub>	320X12519X
15	39.52	24.79	33.30 <sup>+0.15</sup> / <sub>-0.1</sub>	320X12539X
25	53.42	38.50	47.04 ±0.13	320X10559X
37	69.70	54.96	63.50 ±0.13	320X12559X



Directive 2002/95/EC  
„RoHS“  
Compliant

APPROVAL # FREIGABE # DEBLOCAGE # AUTOR/ZACION # APPROVAL	
CUSTOMER APPROVAL DATE:	
NAME:	TITLE:
COMPANY NAME:	
APPROVAL # FREIGABE # DEBLOCAGE # AUTOR/ZACION # APPROVAL	

NOTES:

1. METAL SHELLS: STEEL; min. 320µ" TIN
2. INSULATORS: PBT GF UL 94 V-0, BLUE
3. CONTACTS: COPPER ALLOY  
PLATING: 8µ" HARD GOLD OVER min. 50µ" NICKEL
4. MAXIMUM TORQUE VALUE FOR THREAD: 6" LBS
5. CONNECTOR IS PART MARKED: PART-NO. CONEC ABC

THIS DRAWING MAY NOT BE COPIED OR REPRODUCED IN ANY WAY, AND MAY NOT BE PASSED ON TO A THIRD PARTY WITHOUT WRITTEN PERMISSION. OWNERSHIP AND COPYRIGHT OF CONEC GmbH DO NOT ALTER CAD DRAWING BY HAND

tolerance		dim. in mm	scale: 2:1	
			material: SEE NOTES	
2006	date	title:		
drawn	03.02.	D-SUB GENDER CHANGER		
appd.	03.02.	2 x SOCKET CONNECTOR		
norm		9-37pos.		
d-old		DIN 41652		
a	Origin	dwg no:		AutoCAD 2004
rev.	description	16K1A1724		DIN-A
date	name	part no: SEE TABLE		4
				sh: 1/1

