


## PSC 1,5/ 3-M-PE

Order No.: 1848122



<http://eshop.phoenixcontact.de/phoenix/treeViewClick.do?UID=1848122>

Header, Nominal current: 8 A, Number of positions: 3, Pitch: 3.5 mm, Color: green, Assembly: Soldering

Commercial data	
GTIN (EAN)	 4 017918 114220
sales group	E150
Pack	50 pcs.
Customs tariff	85369010
Catalog page information	Page 343 (CC-2011)

### Product notes

WEEE/RoHS-compliant since:  
01/01/2003



<http://www.download.phoenixcontact.com>  
Please note that the data given here has been taken from the online catalog. For comprehensive information and data, please refer to the user documentation. The General Terms and Conditions of Use apply to Internet downloads.

### Technical data

Dimensions / positions	
Length	20.8 mm
Pitch	3.5 mm
Dimension a	7 mm
Number of positions	3

**Technical data**

Range of articles	PSC 1,5/..-M
Insulating material group	I
Connection in acc. with standard	EN-VDE
Nominal current I <sub>N</sub>	8 A
Nominal voltage U <sub>N</sub>	250 V
Insulating material	PA
Inflammability class acc. to UL 94	V0
Color	Green
Nominal voltage, UL/CUL Use Group B	300 V
Nominal current, UL/CUL Use Group B	8 A
Nominal voltage, UL/CUL Use Group D	300 V
Nominal current, UL/CUL Use Group D	8 A

**Certificates / Approvals**



Certification

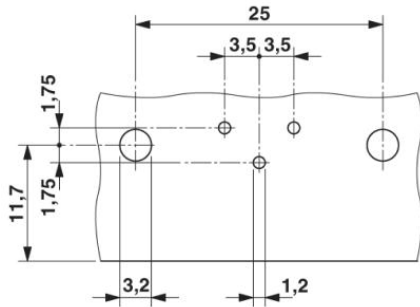
CSA, CUL, GOST, UL

**Additional products**

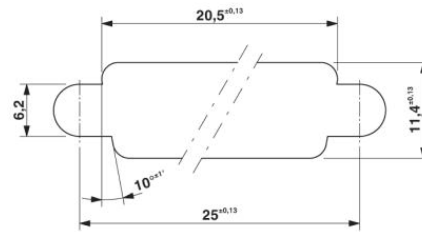
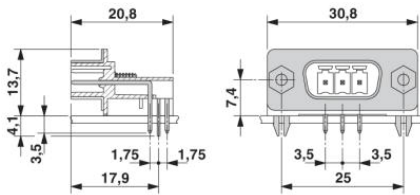
Item	Designation	Description
<b>General</b>		
1841909	PSC 1,5/ 3-F	Plug component, Nominal current: 8 A, Number of positions: 3, Pitch: 3.5 mm, Connection method: Screw connection, Color: green

### Diagrams/Drawings

#### Drilling plan/solder pad geometry

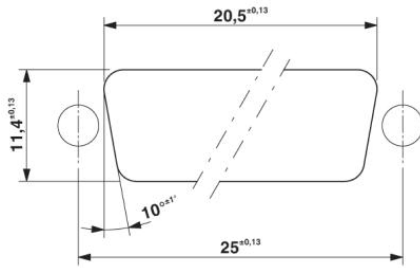


#### Dimensioned drawing



Panel cutout in acc. with DIN 41652-3 for walls up to 4.5 mm thick

Panel cutout in acc. with DIN 41652-3 for wall up to 2.0 mm thick



**Address**

PHOENIX CONTACT Inc., USA  
586 Fulling Mill Road  
Middletown, PA 17057, USA  
Phone (800) 888-7388  
Fax (717) 944-1625  
<http://www.phoenixcon.com>



© 2011 Phoenix Contact  
Technical modifications reserved;