

4

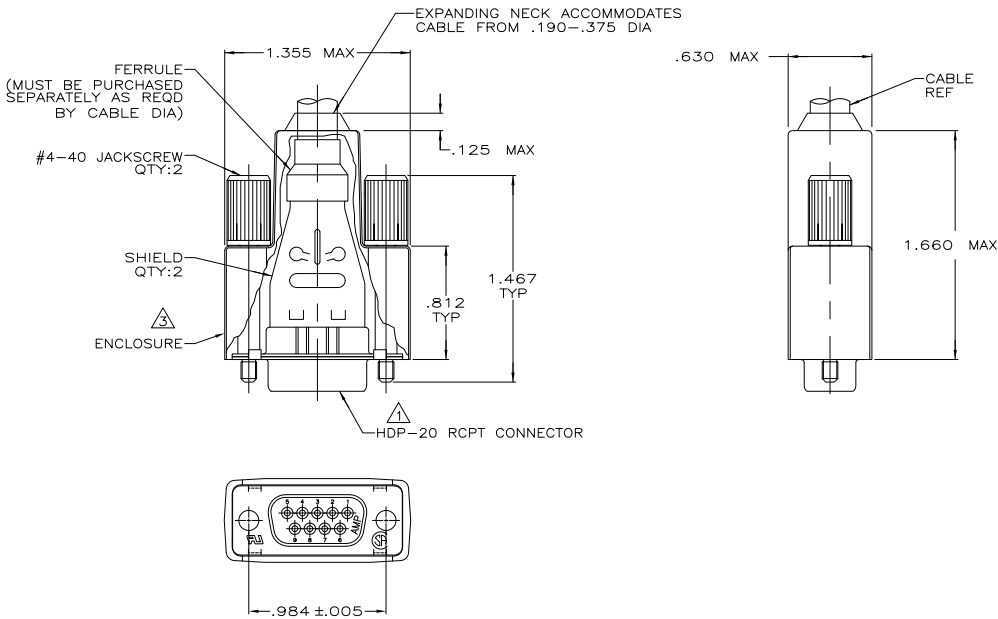
3

2

1

THIS DRAWING IS UNPUBLISHED. RELEASED FOR PUBLICATION. ALL RIGHTS RESERVED.

LOC	DIST	REVISIONS		
GP	00	P	LTR	DESCRIPTION
		P		REVISED PER ECO-11-004835
			DATE	MIN
			11MAR11	RK HMR



- ⚠ RECEPTACLE ACCEPTS SIZE DF SOCKET CONTACTS. CONTACTS MUST BE PURCHASED SEPARATELY.
- 2. ALL PARTS SHIPPED UNASSEMBLED.
- ⚠ STYRENE POLYOLEFIN OR PVC, 94V-0 RATED, FLAME RETARDANT, BLACK.
- ⚠ NYLON OR POLYESTER, 94V-0 RATED, GLASS FILLED, FLAME RETARDANT, BLACK.
- ⚠ STEEL PER ASTM A109.
- ⚠ .000200 MIN TIN PLATE OVER .000100 MIN COPPER UNDERPLATE.
- ⚠ ZINC PHOSPHATE COATING, BLACK.
- ⚠ COMPONENTS INDIVIDUALLY BULK PACKED.

⚠	W/LOGO	⚠	ZINC ALLOY	1658654-1
PACKAGING	REMARKS	JACKSCREW FINISH	JACKSCREW MATERIAL	PART NUMBER

THIS DRAWING IS A CONTROLLED DOCUMENT.		DATE	31JUL03	TE Connectivity	
DESIGNED BY: J. REITZEL		DATE	31JUL03	TE Connectivity	
CHECKED BY: S. BOLASH		DATE	31JUL03	TE Connectivity	
DRAWN BY: M. WALMSLEY		DATE	31JUL03	TE Connectivity	
PRODUCT SPEC: 108-40030		SIZE	A2	CAGE CODE	1658654
APPLICATION SPEC: 114-40030		REV	C	REV	P
MATERIAL INSERT: ⚠		WEIGHT	-	RESTRICTED TO	
SHELLS & SHIELDS: ⚠		FINISH	-	CUSTOMER DRAWING	
JACKSCREWS: SEE TABLE		SCALE	2:1	SHEET	1 of 1