

REFERENCE SPECIFICATIONS

-NFC 93425 (in compliance with HE 507)

PHYSICAL CHARACTERISTICS

-INSULATOR MATERIAL: THERMOPLASTIC .UL94V0

-ACCESSORIES: BRASS

-SHELLS: STEEL

ELECTRICAL CHARACTERISTICS

-CONTACT/CONTACT : >=1000 V

-CONTACT/GROUND : >=1200 V

-INSULATION RESISTANCE: >=5000 MOhms

ENVIRONMENTAL CHARACTERISTICS

- CLIMATIC CATEGORY: 55/125/21
 TEMPERATURE RANGE -55°C TO +125°C
 DAMP HEAT STEADY STATE 21 DAYS
 SALT SPRAY 24 HOURS

MECHANICAL CHARACTERISTICS

- RETENTION AGAINST TORQUE: - Threaded insert: 0.7 N.m minimum
 - Female screw : 0.5 N.m minimum

Series ← DBL5W5PA00LF

Shell size: E A B C
 see sheet 2

Front accessory definition
 see sheet 2

- Blank : Without accessory
- L : Threaded insert M3
- O : Threaded insert UNC 4-40
- V : Female screw UNC 4-40

Layout of contacts (see sheet 3)

Contacts

P :Pin

PCB accessory definition

A without accessory on PCB

Power contacts

Q0 without power contact

See note RoHS

NOTE RoHS INFORMATION

- The "LF" products meet european union Directives and other country regulations as described in GS-22-008.
- Shell plating :2 to 4µm Cu + Ni + 3 to 10µmm Sn(pure bright)
- Accessories: Sn pure bright + nickel
- Packaging spec: See GS-14-920



rev	ech no	dr	date	Dr	M. PESSON	2005-10-11	surface	-	tolerance std	ISO 1101	projection	mm
A	LS05-0113	HPE	2005-11-28	Eng	P. LEGARE	2005-10-11	ANGULAR	LINEAR	0.X	±0.3	A2	Scale 2:1
B	LS06-0708	LGO	2006-12-13	Chr			0° 1' ±2°		0.XX	±0.1	ECN	F09-0076
C	LS07-0273	HPE	2007-11-05	Apr			Product family		0.XXX	±0.05	-	Spec ref
D	F09-0076	LSA	2009-08-20									
E	F10-0017	LSA	2010-03-10									
-	-	-	-									
-	-	-	-									

www.fciconnect.com

ISO 1502

ISO 406

ISO 1101

TOLERANCES UNLESS OTHERWISE SPECIFIED

Product family

FCI logo

SUB MALE DW

full power without contact

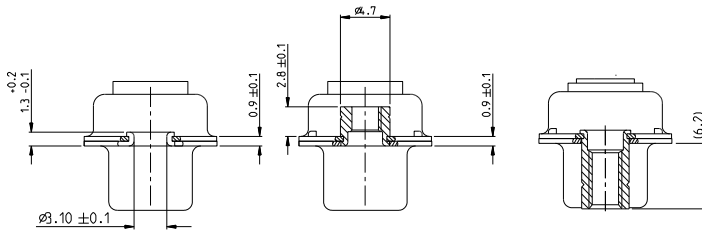
Rev. E

C01-8639-2315

CUSTOMER

sheet 1 of 4

Copyright FCI



FRONT ACCESSORY	Blank without	L insert M3 O insert UNC 4.40	V Female screw UNC 4-40
PCB ACCESSORIES	A without	A without	A without

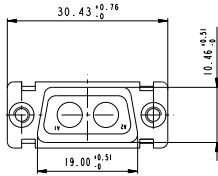
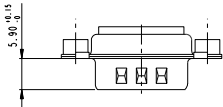
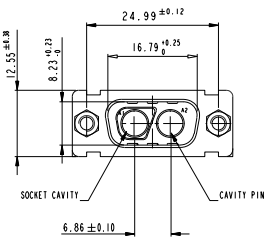
PART NUMBER	FRONT ACCESSORY	PCB ACCESSORY
D*xW xPA00LF	W ITHOUT	W ITHOUT
D*yxW xPA00LF	Female screw UNC 4-40	W ITHOUT
D*LxW xPA00LF	Insert M3	W ITHOUT
D*OxW xPA00LF	Insert UNC 4-40	W ITHOUT

shell size	LAYOUTS
▪	xW x
E	2V2
A	3V3
A	3W3
B	5W5
C	8W8

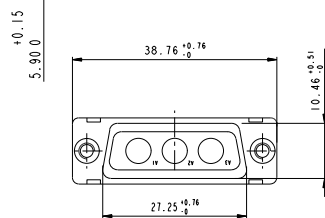
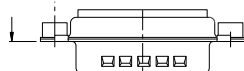
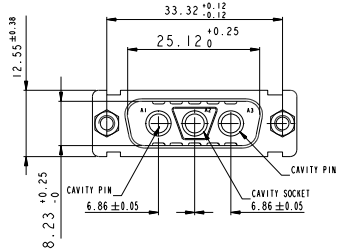
Copyright FCI

www.fciconnect.com		surface ISO 1502	tolerance std ISO 406 ISO 1101	projection	mm
TOLERANCES UNLESS OTHERWISE SPECIFIED		ANGULAR	LINEAR	size	Scale
Df	M. PESSON 2005-10-11	0.x	0.xx	A2	2:1
Emp	P. LEGARE 2005-10-11	0' 1' 42"	0.xxx	ECN	F09-0076
Apr		Product family		Spec ref	
SUB MALE DW full power without contact				C01-8639-2315	Rev. E
Customer no.				CUSTOMER	sheet 2 of 4

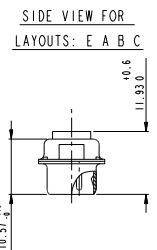
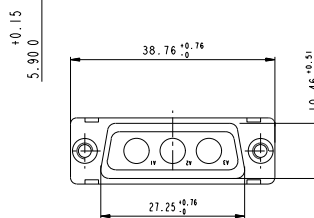
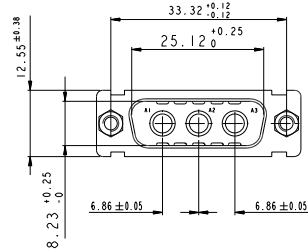
2V2



3V3



3W3

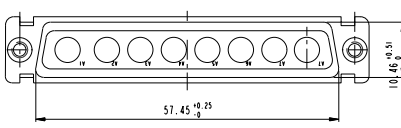
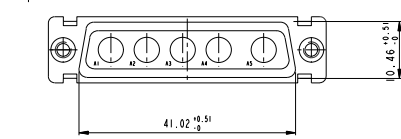
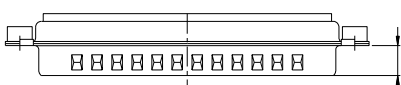
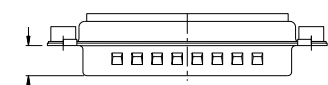
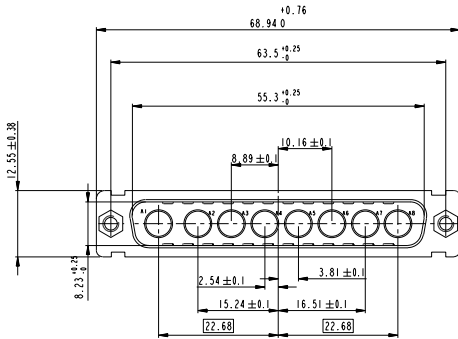
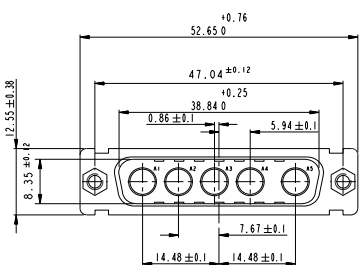


Copyright FCI

www.fciconnect.com		surface 150 1302	tolerance std 150 406 150 1101	projection TOLERANCES UNLESS OTHERWISE SPECIFIED	mm
Dr M PESSON 2005-10-11	ANGULAR	0.X	±0.3	size	Scale
Eng P LEGARE 2005-10-11	LINEAR	0.24	±0.1	A2	2:1
Chr	12°	0.3xx	±0.05	ECN	F09-0076
Appr	Product family			Spec ref	
SUB MALE DW full power without contact				C01-8639-2315	Rev. E
catalog no				CUSTOMER	sheet 3 of 4

5W5

8W8



Copyright FCI

www.fciconnect.com		surface 150 1302	tolerance std 150 406 150 1101	projection TOLERANCES UNLESS OTHERWISE SPECIFIED	mm
Dr	M. PESSON	2005-10-11	ANGULAR	0.1	±0.3
Eng	P. LEGARE	2005-10-11	LINEAR	0.14	±0.1
Chr			0.12	±0.05	ECN
Appr			Product family		Spec ref
SUB MALE DW				01	C01-8639-2315
full power without contact				CUSTOMER	sheet 4 of 4
catalog no				PDM: Rev:E	STATUS: Released