

REFERENCE SPECIFICATIONS

-NFC 93425 (in compliance with HE 507)

PHYSICAL CHARACTERISTICS

- INSULATOR MATERIAL: THERMOPLASTIC .UL94V0
- ACCESSORIES: BRASS
- SHELLS: STEEL

ELECTRICAL CHARACTERISTICS

- CONTACT/CONTACT : >=1000 V
- CONTACT/GROUND : >=1200 V
- INSULATION RESISTANCE: >=5000 MOhms

ENVIRONMENTAL CHARACTERISTICS

- CLIMATIC CATEGORY: 55/125/21
- TEMPERATURE RANGE -55°C TO +125°C
- DAMP HEAT STEADY STATE 21 DAYS
- SALT SPRAY 24 HOURS

MECHANICAL CHARACTERISTICS

- RETENTION AGAINST TORQUE:
 - Threaded insert: 0.7 N.m minimum
 - Female screw : 0.5 N.m minimum

Series ← **DBL5W5PA00LF**

Shell size: E A B C
see sheet 2

Front accessory definition
see sheet 2

- Blank : Without accessory
- L : Threaded insert M3
- O : Threaded insert UNC 4-40
- V : Female screw UNC 4-40

Layout of contacts (see sheet 3)

Contacts

- P :Pin

PCB accessory definition

- A without accessory on PCB

Power contacts

- Q0 without power contact

See note RoHS

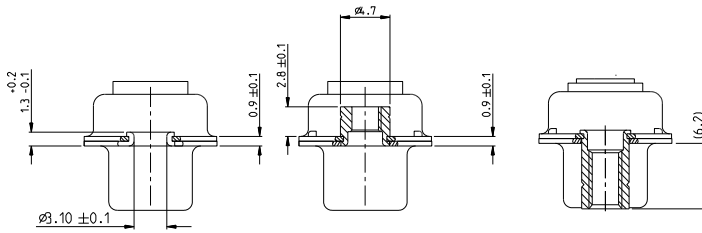
NOTE RoHS INFORMATION

- The "LF" products meet european union Directives and other country regulations as described in GS-22-008.
- Shell plating :2 to 4µm Cu + Ni + 3 to 10µmm Sn(pure bright)
- Accessories: Sn pure bright + nickel
- Packaging spec: See GS-14-920



rev		ech no	dr	date	Dr	M. PESSON	2005-10-11	surface	-	tolerance std	ISO 1102	ISO 1106	ISO 1101	projection	mm	Scale
A		LS06-0113	HPE	2005-11-28	Eng	P. LEGARE	2005-10-11	ANGULAR	LINEAR	0.X	±0.3	±0.1	±0.05	A2	2:1	
B		LS06-0708	LGO	2006-12-13	Chr			0" 1/32"	0.XXX	±0.05	±0.05	±0.05	ECN		F09-0076	
C		LS07-0273	HPE	2007/11/05	Apr			Product family						Spec ref		
D		F09-0076	LSA	2009-08-20				SUB MALE DW						Rev.		
E		F10-0017	LSA	2010-03-10				full power without contact						C01-8639-2315	E	
-		-	-	-				Catalog no						CUSTOMER	sheet 1 of 4	

Copyright FCI



FRONT ACCESSORY	Blank without	L insert M3 O insert UNC 4.40	V Female screw UNC 4-40
PCB ACCESSORIES	A without	A without	A without

PART NUMBER	FRONT ACCESSORY	PCB ACCESSORY
D*xW xPA00LF	W ITHOUT	W ITHOUT
D*yxW xPA00LF	Female screw UNC 4-40	W ITHOUT
D*LxW xPA00LF	Insert M3	W ITHOUT
D*0xW xPA00LF	Insert UNC 4-40	W ITHOUT

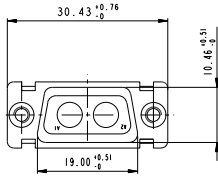
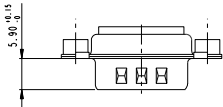
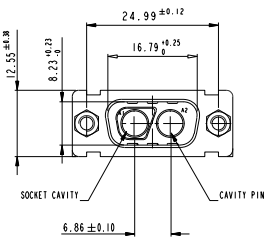
shell size	LAYOUTS
▪	xW x
E	2V2
A	3V3
A	3W3
B	5W5
C	8W8

Copyright FCI
FCI

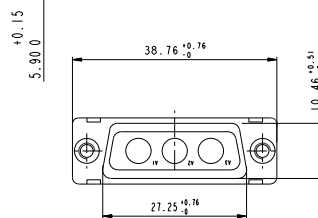
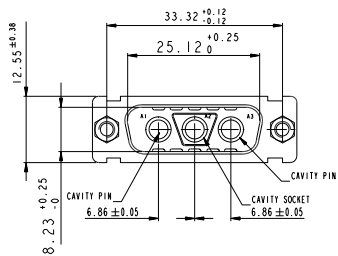
www.fciconnect.com		surface ISO 1502	tolerance std ISO 406 ISO 1101	projection	mm
TOLERANCES UNLESS OTHERWISE SPECIFIED		ANGULAR	LINEAR	size	Scale
Dr	M. PESSON 2005-10-11	0.x	0.xx	A2	2:1
Eng	P. LEGARE 2005-10-11	0' 1' 12"	0.xxx	ECN	F09-0076
Appr				Spec ref	
FCI SUB MALE DW full power without contact				C01-8639-2315	Rev. E
CUSTOMER				sheet 2 of 4	

PDM: Rev:E STATUS: Released 8 Printed: Oct 01, 2010

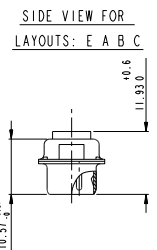
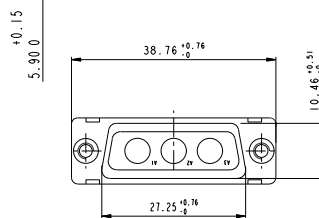
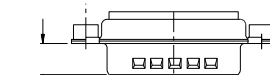
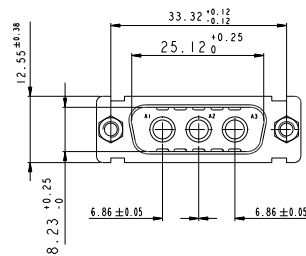
2V2



3V3



3W3

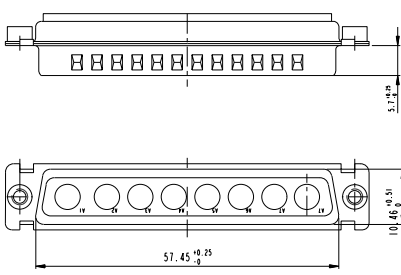
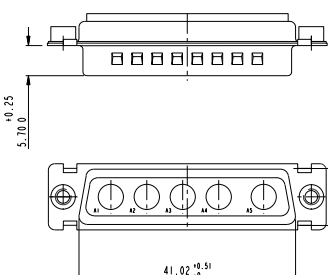
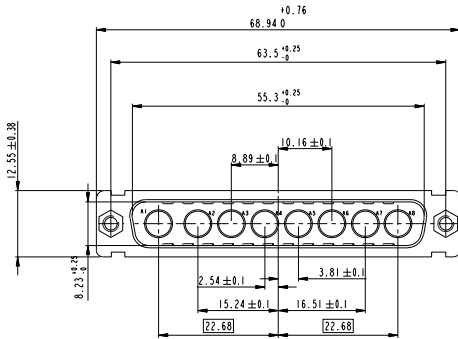
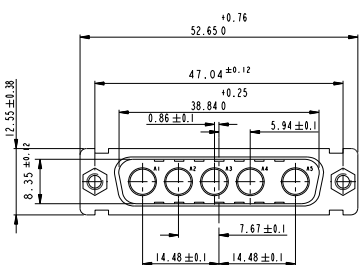


Copyright FCI

www.fciconnect.com		surface 150 1302	tolerance std 150 406 150 1101	projection TOLERANCES UNLESS OTHERWISE SPECIFIED	mm
Dr	M. PESSON 2005-10-11	ANGULAR	0.1	±0.3	size A2
Eng	P. LEGARE 2005-10-11	LINEAR	0.15	±0.1	Scale 2:1
Chr		0.125	±0.05	ECN	F09-0076
Appr		Product family		Spec ref	
SUB MALE DW		full power without contact		010	C01-8639-2315
catalog no		CUSTOMER		sheet 3 of 4	

5W5

8W8



Copyright FCI

www.fciconnect.com		surface	tolerance std	projection	mm
		150 1302	150 406 150 1101		
TOLERANCES UNLESS OTHERWISE SPECIFIED					
Dr	M. PESSON	2005-10-11	ANGULAR	0.1	±0.3
Eng	P. LEGARE	2005-10-11	LINEAR	0.14	±0.1
Chr			0.12	±0.05	ECN
Appr			Product family		Spec ref
SUB MALE DW full power without contact				C01-8639-2315	Rev. E
catalog no				CUSTOMER	sheet 4 of 4