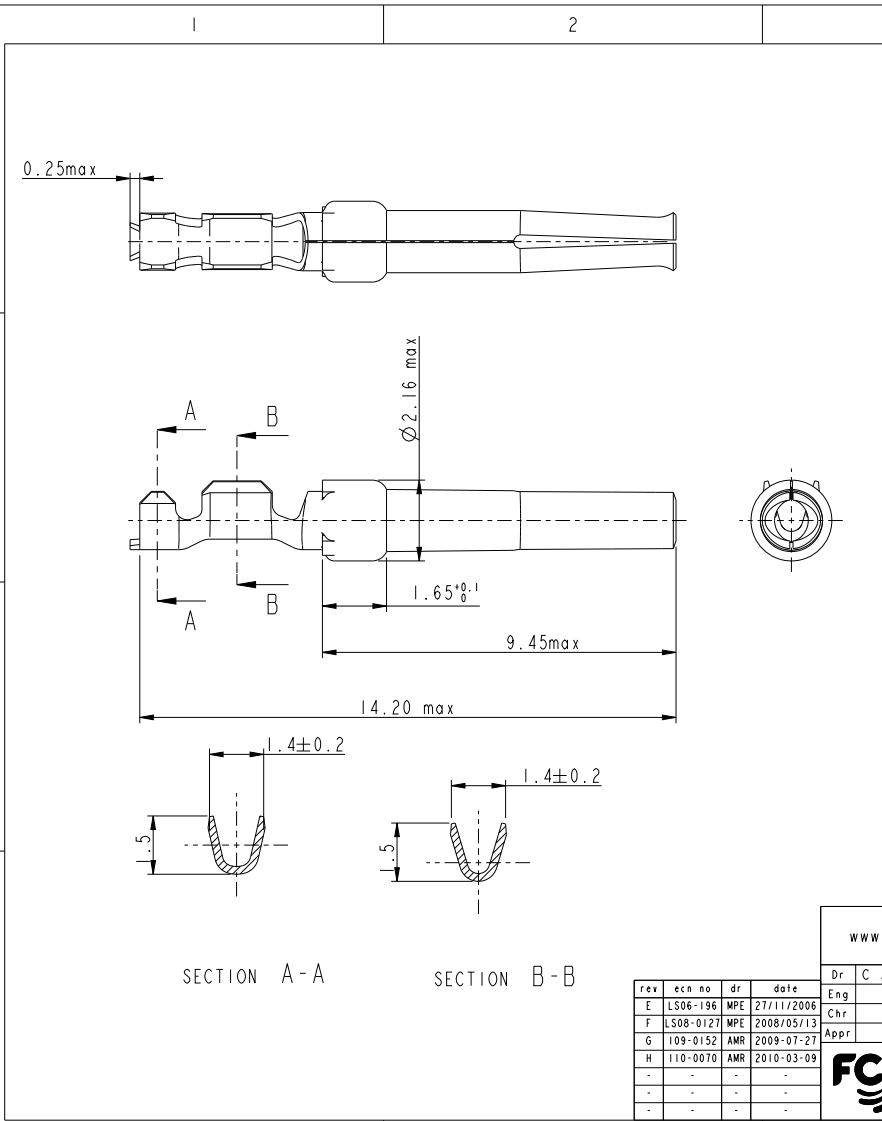


Copyright FCI

FCI



NOTES:

- 1-Material:phosphor bronze,thickness 0.20
- 2-Finish on contact area:see table
finish on termination:bright tin over nickel
- 3-Wire range:24 to 28 AWG
- 4-Max outer dia of wire insulator:1.02 mm
- 5-Current carrying capacity per contact:
 - 3.Amps max when crimped to #24 AWG
 - 2 Amps max when crimped to #26 AWG
 - 1 Amps max when crimped to #28 AWG
- 6-After 5 insertions into connector,
contact retention must be 5 pounds axial load min
- 7-When contact is crimped to 24 AWG,the insulation
support crimped height must be 1.78 mm max to ensure
a proper insertion into housing
- 6-Packaging:BOX of 500 contacts

NOTE : ROHS INFORMATIONS

The LF products meet European union directives and other country regulations as described in GS-22-008
Terminations plating spec : 2um Nickel min + 2um Sn min
Packaging Spec : see GS-14-920

Core range	-
8656351064LF	Flash Au
8656351064	Flash Au
PART NUMBER	Plating

www.fciconnect.com		surface	-	tolerance std	ISO 1302	ISO 406	ISO 1101	projection	mm
		TOLERANCES UNLESS OTHERWISE SPECIFIED							
Dr	C JARRY	28/01/97	ANGULAR	LINEAR	0.X	±0.3	size	A3	Scale
Eng					0.XX	±0.1	ECN	110-0070	10:1
Chr			0°	±2°	0.XXX	±0.05	Product family	-	Spec ref
Appr									
FCI		TITLE			CRIMP SOCKET		AWG no		Rev.
		#Wire 24-28 in bos 500 cts			C01-8656-1507		CUSTOMER		H
		catalog no			-		sheet 1 of 1		

rev	ecn no	dr	date
E	LS06-196	MPE	27/11/2006
F	LS08-0127	MPE	2008/05/13
G	109-0152	AMR	2009-07-27
H	110-0070	AMR	2010-03-09
-	-	-	-
-	-	-	-

REV F - 2006 04-17