

Technical specification:

| | |
|-------------------------------------|---------------------------|
| Rated voltage: IEC 61076-2-101 | 4pos 5pos 250 V 60 V |
| Current rating: IEC 61076-2-101 | 4 A at 40°C |
| Insulation resistance: IEC 60512 | >=100 MΩ |
| Pollution degree: IEC 60664-1 | 3/2 |
| Degree of protection: IEC 60529 | IP 67, in mated condition |
| Temperature range: IEC 60664-1 | -30°C ... +85°C |
| Mating cycles: IEC 60512-9a | >=100 |
| Wire cross section: | AWG18 / max. 0,75 mm² |

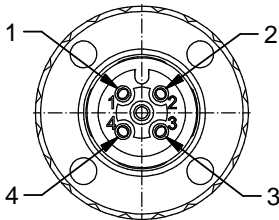
Materials:

| | |
|------------------|---------------------------|
| Contact: | CuZn |
| Contact plating: | Nickel, gold plated |
| Contact carrier: | PA6, UL 94 |
| Screw connection | CuZn / nickel, tin plated |
| Cable seal: | Elastomere |
| O-Ring: | FKM / NBR |
| Coupling nut: | GD-Zn, nickel plated |
| Housing: | PA6 GF, UL 94 |

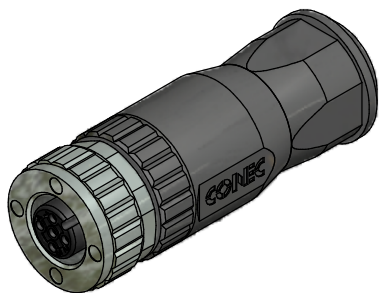
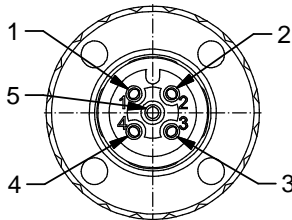
Installation specification:

| | |
|-----------------------------|---|
| Recommended torque: | 0,6 Nm |
| Conec installation tooling: | Torque wrench: 36-000200 Insert across flats 18: 36-000240 |

4pos



5pos

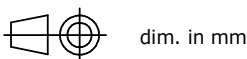


| Part no: | Description: | Pos: | Cable-Ø: |
|----------|---------------------------|------|----------|
| 43-00092 | SAL - 12 - RKC4 - S / 075 | 4 | 4 - 8 mm |
| 43-00094 | SAL - 12 - RKC5 - S / 075 | 5 | 4 - 8 mm |

DO NOT ALTER CAD DRAWING BY HAND
Directive 2002/95/EC RoHS compliant

Index: b 01.02.11 dbu Ä3741
Coding on housing removed, coupling nut modified, spanner flats added, data sheet modified

THIS DRAWING MAY NOT BE COPIED OR REPRODUCED IN ANY WAY, AND MAY NOT BE PASSED ON TO A THIRD PARTY WITHOUT WRITTEN PERMISSION.
OWNERSHIP AND COPYRIGHT OF CONEC GmbH



| | date | name |
|-------|----------|----------|
| drawn | 19.01.09 | Burschik |
| appd. | 19.01.09 | Schmidt |



title:
**Female connector M12x1,
field attachable, axial,
screw connection**

dwg no:
43K1A834

part no:
see table