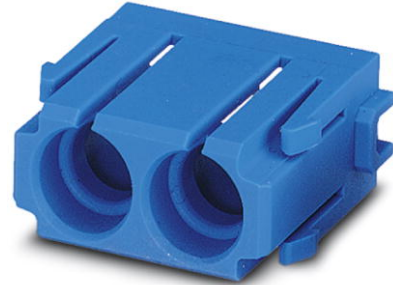


# HC-M-PN2-MOD-ST-BU


Order No.: 1674998



<http://eshop.phoenixcontact.de/phoenix/treeViewClick.do?UID=1674998>

HEAVYCON pneumatic module, male/female, 2 connections

## Commercial data

GTIN (EAN)	 4 017918 146368
sales group	D042
Pack	2 pcs.
Customs tariff	85369010
Catalog page information	Page 550 (PC-2011)

## Product notes

WEEE/RoHS-compliant since:  
03/27/2006



<http://www.download.phoenixcontact.com>  
Please note that the data given here has been taken from the online catalog. For comprehensive information and data, please refer to the user documentation. The General Terms and Conditions of Use apply to Internet downloads.

## Technical data

### Electrical characteristics

Note	Hinged retaining frame HC-M-MHR...is required for HEAVYCON-ADVANCE housing of types B6 to B24 and HEAVYCON housing of types B6 to B48, pneumatic HC-M-PN... male and female connectors (Pneumatic male and female connectors not included in the scope of supply)
Ambient temperature (operation)	-40 °C ... 80 °C
Number of positions	2

**Mechanical characteristics**

Internal diameter of pressure hose connection	6 mm
Insertion/withdrawal cycles	≥ 500

**General characteristics**

Color	blue
Number of module slots	1
Inflammability class acc. to UL 94	V0
Assembly instructions	Housing height ≥ 52 mm. Use of HC-CST (1676857) coding pins and HC-CBU (1676860) coding sockets has been prescribed. Observe the min bending radii when connecting the tubes.
Connection	- Lock together the pneumatic contact with the module. In order to introduce the contact into the module from the front side, - use the modules equipped with the contacts in the hinged retaining frame. The hinged retaining frame is fixed after insertion with HC-M-MHR-FIX (opening prevented), - the pneumatic tubes are pushed from the rear module side to the pneumatic contact.

**Material data**

Contact carrier material	PC
--------------------------	----

**Certificates / Approvals**

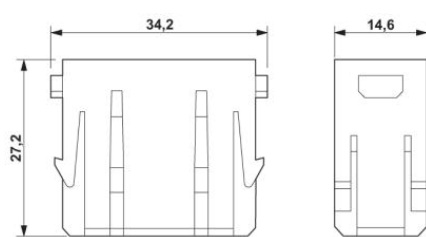


Certification

CSA, GOST, UL

**Diagrams/Drawings**

Dimensioned drawing



2-pos.

**Address**

PHOENIX CONTACT Inc., USA  
586 Fulling Mill Road  
Middletown, PA 17057, USA  
Phone (800) 888-7388  
Fax (717) 944-1625  
<http://www.phoenixcon.com>



© 2011 Phoenix Contact  
Technical modifications reserved;