

Features

- HIGH PERFORMANCE TERMINATION NETWORK
- Miniaturized circuitry and packaging for space reduction
- Designed for gigabit communication networks
- Controlled impedance
- RoHS compliant*

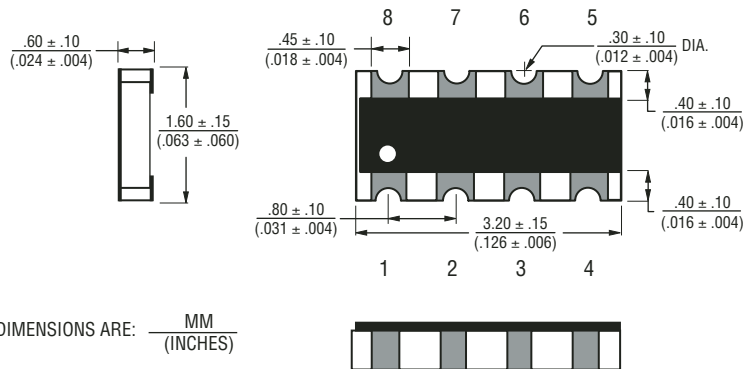
CAT16-LV2F6LF - Concave Chip Array

Electrical Characteristics

Resistance
 R1165 ohms
 R2140 ohms
 TCR.....±200 ppm/°C
 Temperature Range-55 °C to +125 °C
 Max. Operating Voltage5 VDC
 Max. Power Resistance0.0625 W
 Solderability>95 % Coverage

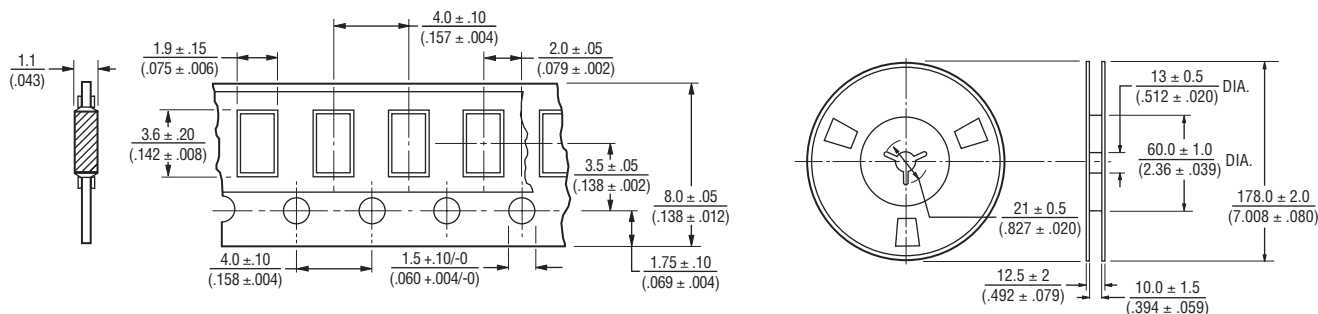
For Standard Values Used in Capacitors, Inductors, and Resistors, [click here](#).

Product Dimensions

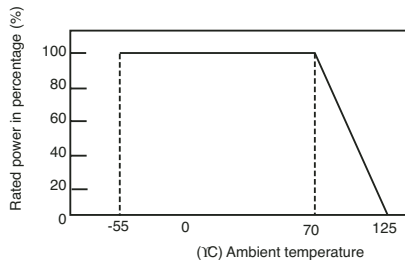


Packaging Specifications

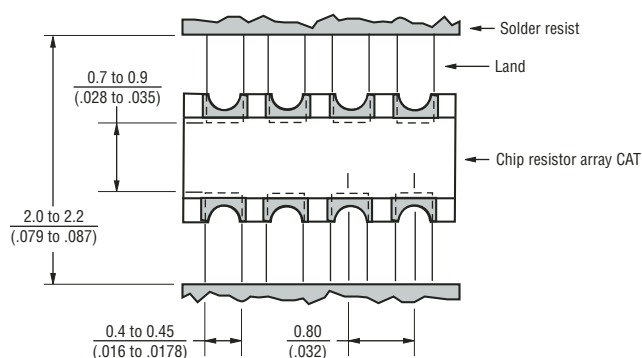
5000 pcs - per 7" reel



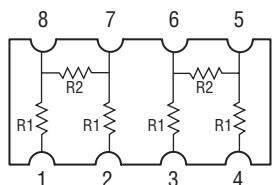
Derating Curve



Land Pattern



Schematic



REV. 11/06

*RoHS Directive 2002/95/EC Jan 27 2003 including Annex. Specifications are subject to change without notice. Customers should verify actual device performance in their specific applications.