

4

3

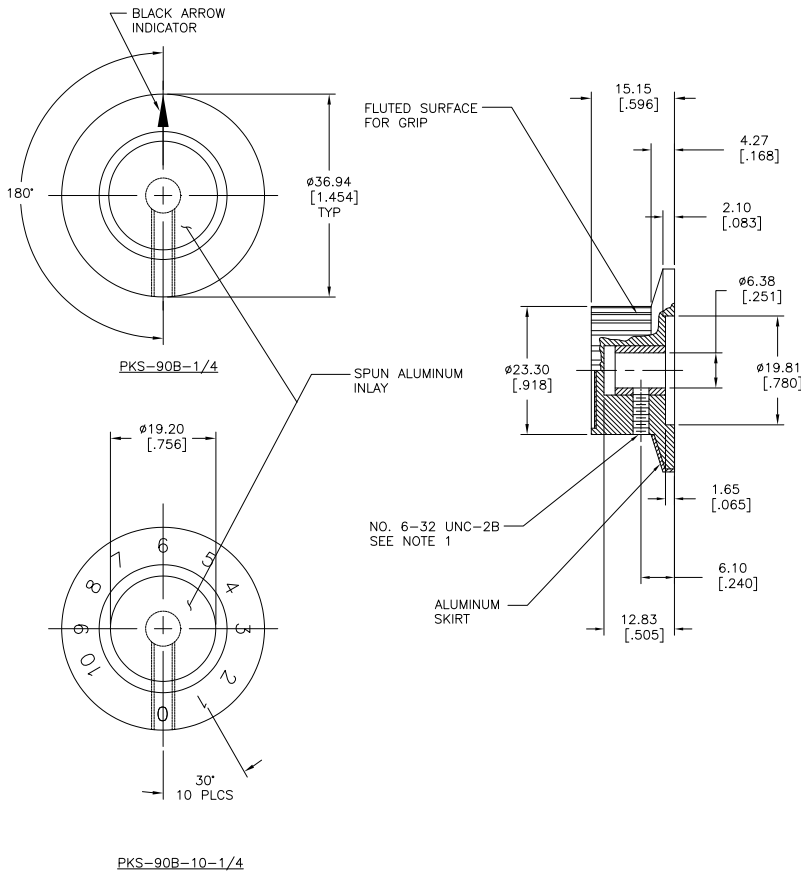
2

1

THIS DRAWING IS UNPUBLISHED. RELEASED FOR PUBLICATION.
 © COPYRIGHT BY TYCO ELECTRONICS CORPORATION. ALL INTERNATIONAL RIGHTS RESERVED.

LOC	DIST	REVISIONS		DATE	BY	APP'D
		F	LWR			
		A	REDRAWN PER ECO-08-027936	19NOV08	HMR	MW

1 SUPPLIED WITH ONE STEEL HEX SOCKET SET SCREW
 CUP POINT NO. 6-32 UNC-2A, .312/[7.93] LONG.



TOLERANCES UNLESS NOTED			
0.50-4.00 [.020-.157]	±0.03 [.001]	SHAFT HOLE Ø6.38 [.251]	+0.07 [.003]
4.01-16.00 [.158-.630]	±0.10 [.004]		-0.00 [.000]
mm [INCH]	16.03-64.00 [.631-2.520]	±0.38 [.015]	ANGULAR ±2° NON-ACCUMULATIVE

0~10	1437625-6
BLACK ARROW	1437625-5
DESCRIPTION	PART NUMBER

THIS DRAWING IS A CONTROLLED DOCUMENT.

DRG	ROACHAVENDRA	19NOV08
CHK	WILBOURN, M	19NOV08
APP'D	WILBOURN, M	19NOV08
NAME		
APPLICATION SPEC		
PRODUCT SPEC		
SIZE	A2	00779
WEIGHT		
CAGE CODE	1437625-5	
DRAWING NO	1437625-5	
RESTRICTED TO		
CUSTOMER DRAWING	SCALE	2:1
	SHEET	1 of 1
	REV	A

1471-9 (1/08)

1437625-5

A