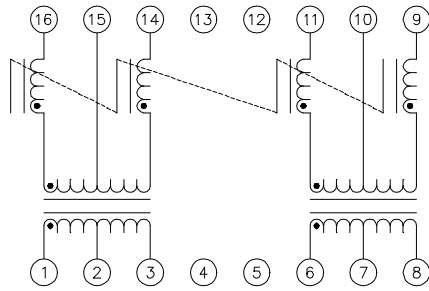
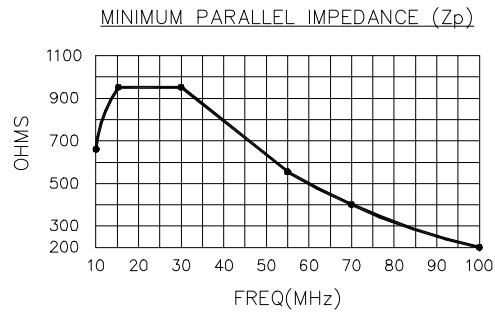


## Electrical



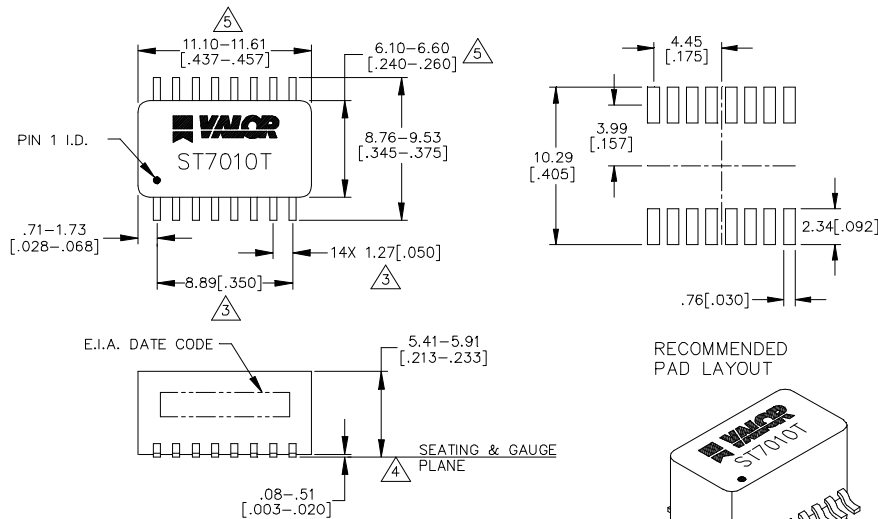
SCHMATIC



### ELECTRICAL SPECIFICATIONS @ 25°C

URNS RATIO (1-2-3 TO 16-15-14)	: 1CT : 1CT ± 5%
URNS RATIO (6-7-8 TO 11-10-9)	: 1CT : 1.41CT ± 5%
PHASING	: 1, 16 AND 11, 6 IN-PHASE
OCL (1 - 3)	: 175μH MIN @ 10mV, 10KHz
OCL (6 - 8)	: 80μH MIN @ 10mV, 10KHz
OCL (COMMON MODE INDUCTOR) (15 TO 14 AND 16 SHORTED)	: 18-45μH @ .008VRMS MAX, 100KHz
LL (9-11, SHORT 6-8)	: 0.55μH MAX @ 1MHz MIN
LL (1-3 SHORT 14-16)	: 0.40μH MAX @ 1MHz MIN
Cww (1-3 TO 14-16 AND 6-8 TO 9-11)	: 20pF MAX
DCR (1-3, 14-16, 6-8 AND 9-11)	: 0.9Ω MAX
HIPOT (1-3 TO 14-16 AND 9-11 TO 6-8)	: 2000VRMS
Zp (COMMON MODE INDUCTOR): (14 AND 16 SHORTED) TO 15, OR (9 AND 11 SHORTED) TO 10	: PER GRAPH

## Mechanical



△ DIMENSIONS NOT TO INCLUDE MAXIMUM FLASH .25[.010].

△ COPLANARITY: .10[.004]

△ LEADS WITHIN .13[.005] RADIUS OF TRUE POSITION AT GAUGE PLANE WITH MAXIMUM MATERIAL CONDITION AND UNIT INSTALLED.

2. LEAD: SOLDERABILITY PER MIL-STD-202, METHOD 208.

△ PACKAGE: THERMOSET, MOLDED, BLACK, SELF-EXTINGUISHING PER UL94V-0.

NOTES: UNLESS OTHERWISE SPECIFIED

WEBSITE [www.valorinc.com](http://www.valorinc.com) E-MAIL [marketing@valorinc.com](mailto:marketing@valorinc.com)

**NORTH AMERICA**  
tel 1-800-31 VALOR  
fax 619-537-2525

**ASIA/PACIFIC**  
tel +852-2953-1000  
fax +852-2953-1333

**EUROPE**  
tel +44-1727-824 875  
fax +44-1727-824 898