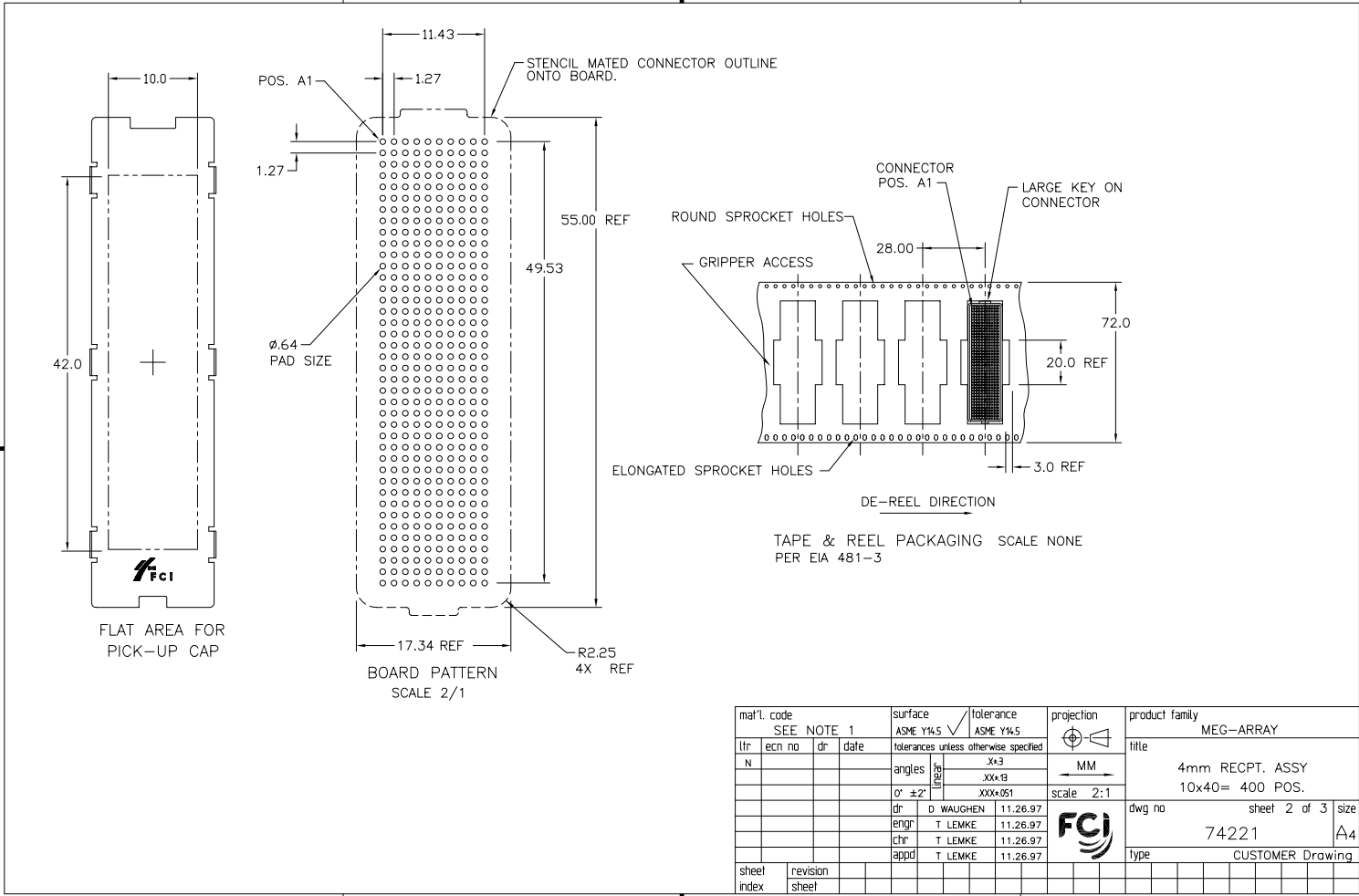


Ø.760 SOLDER BALLS  
NOTE 2.

⊕ Ø.30 X Y

∕ .203

mat'l. code	SEE NOTE 1	surface	ASME Y14.5	tolerance	ASME Y14.5	projection	product family
litr	ec'n no	dr	date	tolerances unless otherwise specified		MM	MEG-ARRAY
N	v06-0560	LP	2006/07/18	angles	Xx3		title
-	-	-	-		XXX-B		4mm RECPT. ASSY
H	v00181	HLJ	7/5/00	0° ±2°	XXXX-051	scale 3:1	10 X 40= 400 POS.
J	v20006	DRW	1/3/2	dr	D WAUGHEN	11.26.97	dwg no
K	v03-0679	DAI	6/19/03	engr	T LEMKE	11.26.97	sheet 1 of 3
L	v04-0940	VS	10/18/04	chr	T LEMKE	11.26.97	size
M	v05-1071	DAI	12/21/05	appd	T LEMKE	11.26.97	A4
sheet index	revision sheet	N	N	N			74221
		1	2	3			type
							CUSTOMER Drawing



mat'l. code		SEE NOTE 1		surface	ASME Y14.5	tolerance	ASME Y14.5	projection	product family	MEG-ARRAY	
ltr	ecm no	dr	date	tolerances unless otherwise specified				title	4mm RECEPT. ASSY		
N				angles	30	3x3		MM	10x40= 400 POS.		
				or ±2°		XXX-B		scale	2:1	dwg no	sheet 2 of 3
				dr	D WAUGHEN	11.26.97				74221	size
				engr	T LEMKE	11.26.97					A4
				chr	T LEMKE	11.26.97					
				appd	T LEMKE	11.26.97					
sheet index	revision sheet										

PRODUCT NUMBER	PICK-UP CAP	CONTACT PLATING	SOLDER BALL
74221-001	YES	15u" (.38um) Au OVER Ni	SnPb
74221-001LF			SnAgCu LEAD FREE (6)(7)
74221-101	YES	30 u" (.76um) Au OVER Ni	SnPb
74221-101LF			SnAgCu LEAD FREE (6)(7)
74221-201	YES	SEE NOTE 5.	SnPb
74221-201LF			SnAgCu LEAD FREE (6)(7)

NOTES:

1. MAT'L:

HOUSING: LCP

CONTACT: COPPER ALLOY

PLATING

CONTACT: (SEE TABLE ON SHEET3)  
 SOLDER BALL: (SEE TABLE ON SHEET3)  
 EUTECTIC SnPb OR LEAD FREE  
 95.5Sn/4Ag/0.5Cu

2. SOLDER BALLS WILL NOT BE PERFECT SPHERICAL SHAPE DUE TO REFLOW ATTACHMENT.

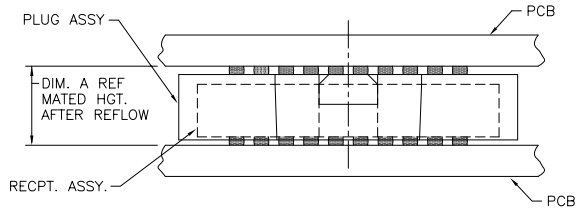
3. MATED HEIGHT EFFECTED BY CUSTOMER'S PCB PAD SIZE, PLATING, SOLDER REFLOW PROFILE, & SOLDER PASTE.

4. NO TIN/LEAD OR FLUX ABOVE TERMINAL SHOULDER.

5. PLATING FOR -2XX SERIES DASH NOS. MEETS THE REQUIREMENTS OF NORTEL NPS25298-2 (CENTRAL OFFICE ENVIRONMENT, 25 YEAR LIFE EXPECTANCY).

6. FOR PROPER APPLICATION FOLLOW FCI APPLICATION SPECIFICATION GS-20-033 LEAD FREE SOLDER BALLS WILL NOT SOLDER PROPERLY IN A LEADED SOLDER PROCESS DUE TO A HIGHER REFLOW TEMPERATURE. LEAD FREE PRODUCT IS THEREFORE NOT BACKWARDS COMPATIBLE WITH LEADED OR SOME SOLDERING APPLICATIONS. REFERENCE FCI APPLICATION SPECIFICATION

7. THIS PRODUCT MEETS EUROPEAN UNION DIRECTIVES AND OTHER COUNTRY REGULATIONS AS DESCRIBED IN GS-22-008 PRODUCT MEETING THIS DIRECTIVE IS IDENTIFIED IN THE LOT CODE NUMBER MARKED ON EACH PART BY HAVING AN "X" IN THE SEVENTH CHARACTER POSITION



DIM. A	PLUG ASSY P/N	RECEPT. ASSY P/N
4.0	84740	74221
10.0	84520	74221

MATED HEIGHT AFTER REFLOW IS BASED ON  $\phi$  .64mm PAD (METAL-DEFINED) AND .13mm SOLDER PASTE STENCIL THICKNESS. SEE NOTE 3.

END VIEW - MATED CONNECTORS SCALE NONE

mat'l code		SEE NOTE 1		surface	ASME Y14.5	tolerance	ASME Y14.5	projection	product family	MEG-ARRAY
ltr	ecrn no	dir	date	tolerances unless otherwise specified			angles	MM	title	4mm RECEPT. ASSY
N					Xx3		XxxB	scale	2:1	10x40= 400 POS.
				0' ±2"	XXXX051					
				dr	D WAUGHEN	11.26.97				sheet 3 of 3
				engr	T LEMKE	11.26.97				size A4
				chr	T LEMKE	11.26.97				dwg no 74221
				appd	T LEMKE	11.26.97				type CUSTOMER Drawing
sheet index	revision sheet									