

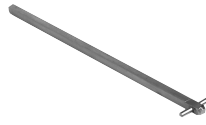
30A – 400A UL Fuse Class J, CC, T

For a complete assembly,
please select one of each:

- 1 switch
- 1 handle
- 1 shaft
- 1 terminal lug



CFD30J3S



CDS67P

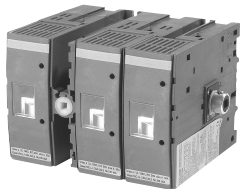


BDH107SH

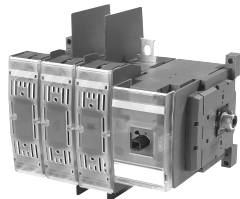
CFD30J3S + CDS67P + BDH107SH

Side operated switches — 3 pole

| UL general purpose amp rating | UL fuse type 600V | Maximum horsepower rating | | | | | Weight (lbs) | Catalog number |
|-------------------------------|-------------------|---------------------------|------|------|------|------|--------------|----------------|
| | | Three phase | | | | | | |
| | | 200V | 208V | 240V | 480V | 600V | | |
| 30 | J | 5 | 7.5 | 7.5 | 15 | 20 | 1.54 | CFD30J3S |
| 30 | CC | 5 | 7.5 | 7.5 | 15 | 20 | 1.54 | CFD30CC3S |
| 60 | J | 15 | 15 | 15 | 30 | 50 | 3.52 | CFD60J3S |
| 100 | J ^⓪ | 25 | 25 | 30 | 60 | 75 | 3.97 | CFD100J3S |
| 200 | J ^⓪ | 50 | 50 | 60 | 125 | 150 | 15.21 | FD200J3-S |
| 400 | J ^⓪ | 100 | 125 | 125 | 250 | 350 | 17.20 | FD400J3-S |



CFD60J3S



CFD100J3S

Handles

| NEMA type | IEC type | Color | Length inches/mm | Marking | Defeatable | Padlockable | Weight | Catalog number |
|---|----------|------------|------------------|-------------|------------|-------------|--------|----------------|
| For use with CFD30J3S & CFD30CC3S | | | | | | | | |
| 1, 3R, 12 | IP65 | Black | 2.6/65 | OFF/ON/TEST | Yes | Yes | 0.29 | BDH106SH |
| 1, 3R, 12 | IP65 | Red/Yellow | 2.6/65 | OFF/ON/TEST | Yes | Yes | 0.29 | BDH107SH |
| For use with CFD60J3S & CFD100J3S | | | | | | | | |
| 1, 3R, 12 | IP65 | Black | 3.1/80 | OFF/ON/TEST | Yes | Yes | 0.30 | BDH110SH |
| 1, 3R, 12 | IP65 | Red/Yellow | 3.1/80 | OFF/ON/TEST | Yes | Yes | 0.30 | BDH111SH |
| For use with FD200J3-S & FD400J3-S | | | | | | | | |
| 1, 3R, 12 | IP65 | Black | 4.9/145 | OFF/ON/TEST | Yes | Yes | 0.39 | BDH114SH |
| 1, 3R, 12 | IP65 | Red/Yellow | 4.9/145 | OFF/ON/TEST | Yes | Yes | 0.39 | BDH115SH |
| 1, 3R, 12 | IP65 | Metal | 4.9/145 | OFF/ON/TEST | — | Yes | 1.50 | BDZX74 |

— = No

Shafts

| For use with: | Length (inches/mm) | Description | Weight (lbs.) | Catalog number |
|-----------------------|--------------------|--------------------------|---------------|----------------|
| CFD30J3S & CFD30CC3S | 6.7/170 | 0.20 x 0.20" (5 x 5mm) | 0.08 | CDS67P |
| CFD60J3S & CFD100J3S | 8.3/210 | 0.24 x 0.24" (6 x 6mm) | 0.13 | BDS210 |
| FD200J3-S & FD400J3-S | 12.8/325 | 0.47 x 0.47" (12 x 12mm) | 0.90 | BDS325 |

Terminal lug kit

| For use on: | Wire size | Kit weight (lbs) | Wire type | Lugs per kit | Catalog number |
|----------------------|----------------|------------------|-----------|--------------|----------------|
| CFD30J3S & CFD30CC3S | #14 – 4 | — | Cu | — | Integral |
| CFD60J3S | #14 – 4 | — | Cu | — | Integral |
| CFD100J3S | #14 – 2/0 | 0.43 | Cu/Al | 6 | BDTL24 |
| FD200J3-S | #6 – 300 kcmil | 0.93 | Cu/Al | 6 | BDTL25 |
| FD400J3-S | #2 – 600 kcmil | 3.50 | Cu/Al | 6 | BDTL26 |

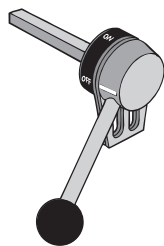
① J type fuse clips are standard. If 600V Type "T" fuse clips are desired, please order the "T" type fuse adapter kit.

Fusible

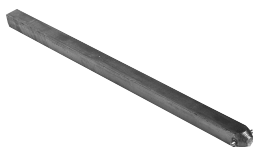
Non-Fused

Enclosed Fused

Enclosed Non-Fused



BDZX74



BDS325



BDTL25