

SERIES 44L

High Current, 5 Amp

LOCK FEATURES

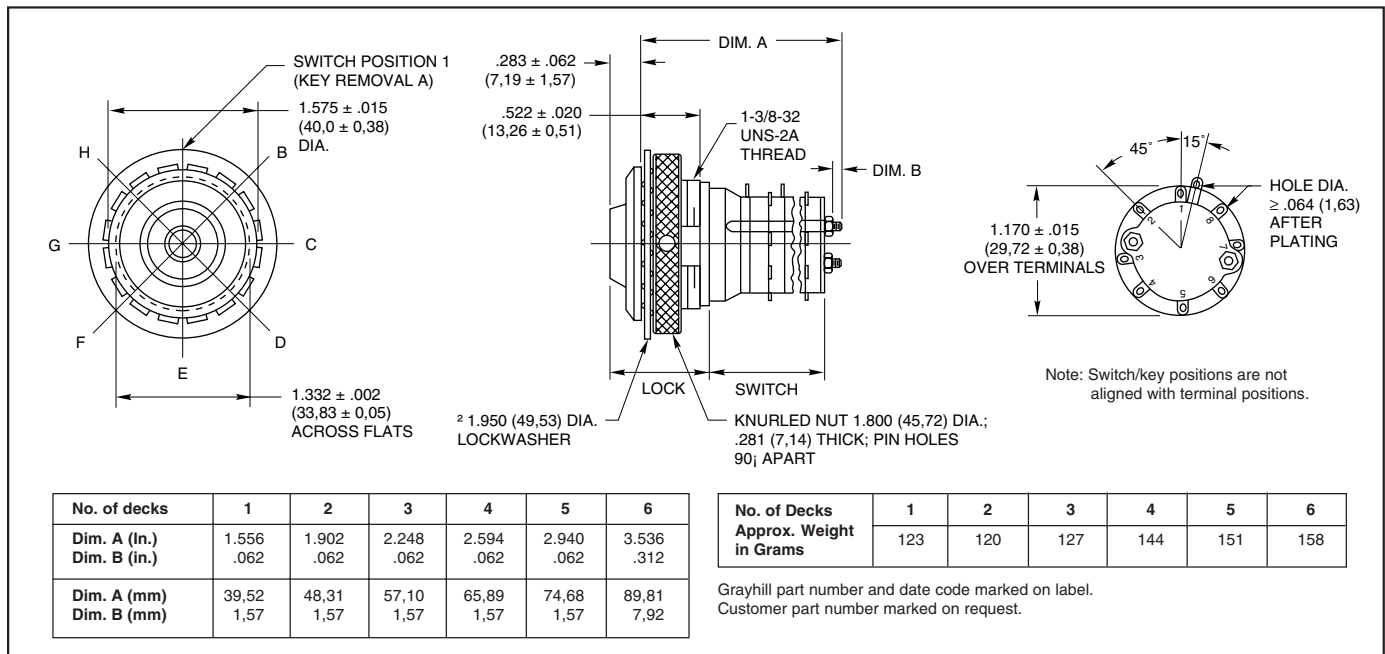
- 8-Pin, Round Key Security
- Options for Flat Keys, Special Keying, and Key Removals

SWITCH FEATURES

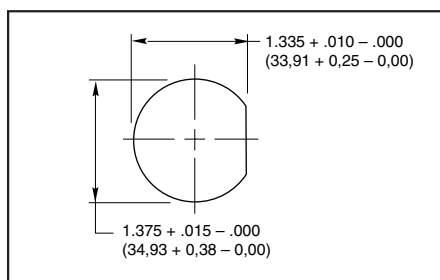
- High, 5 Amp Current Switching
- 45°, Up to 8 Poles Per Switch
- 25,000 Cycles of Operation
- RoHS Compliant



DIMENSIONS In inches (and millimeters)



RECOMMENDED PANEL CUT



LOCK SPECIFICATIONS

- Keying:** Each lock is keyed differently
- Key Removal:** All positions (45°, etc)
- Special Options:** Flat key with 90° or 180° increment key removals; 7 thru 12 decks

LOCK MATERIALS AND FINISHES

- Bushing and Knurled Spanner Nut:** Aluminum, black anodized
- Keying Washer, Cover Support Plate, Shaft Extension:** 302 Stainless steel
- Internal and External Lockwashers:** Brass, tin/zinc-plated or stainless steel.
- Keys, Cylindrical:** Stainless steel; 2 supplied

CHOICES AND LIMITATIONS

Style	Description	Angle of Throw	No. Of Decks	Poles/ Deck	Positions Per Pole	Shorting or Non-Shrtg.
Series 44 Switches						
L	Standard, Solder Lugs	45°	01 to 06	1	02 to 08	N or S
			01 to 03	2	02 to 04	N or S
			01 or 02	3	01 or 02	N
			01 or 02	4	01 or 02	N

SWITCH SPECIFICATIONS

**Electrical Characteristics
Industrial Grade Switch**

Switching Current and Life

The load-life values indicate the number of cycles of operation expected for the voltage, current and type of load. End of life is defined using the resistance and breakdown failure criteria listed below.

5A at	115 Vac, resistive
1A at	6 to 28 Vdc, resistive
2A at	115 Vac, inductive

Cycle of Operation: 360° rotation plus a 360° return

Test Conditions: 25°C, 68% relative humidity, atmospheric pressure

Life Expectancy:

With loads above:	25,000 cycles
Without load:	100,000 cycles

Contact Resistance:

End of life: less than 20 mΩ

Insulation Resistance:

(Between mutually insulated parts)
Initially: 50,000 MΩ

Breakdown Voltage:

(Between mutually insulated parts)
Initially: 1,000 Vac
End of life: 500 Vac

Carry Current: 10A; maximum temperature rise 20°C

Mechanical Characteristics

Switching Mode:

45°, 1 or 2 poles: Shorting or non-shorting

45°, 3 or 4 poles: Non-shorting

Type of Contact: Wiping contacts

Contact Force: greater than 150g

Number of Terminals: Switches are provided with only the number of terminals needed

Stop Strength: greater than 15 in-lbs (1.70 Nm)

Switching Torque: 8-115 in-ozs (28 to 230 mNm), depending on the number of poles, number of decks, and angle of throw

Additional Characteristics

Switches of 6 or more decks have longer studs with extra mounting nuts for recommended double end mount

Materials and Finishes: Switch

Switch Bases: Melamine per MIL-M-14, 4

Switch Bases:

Industrial Grade: Melamine per MIL-M-14

Military: Diallyl per MIL-M-14

Cover, Deck Separators, End Plate, and Rotor Mounting Plate: Phenolic per MIL-M-14

Shaft, Shaft Extension, Stop Arm, Stop Washers, Rear Support Plate, Cover Plate, Retaining Ring, Studs, Nuts: Stainless steel

Detent Balls: Steel, nickel-plated

Detent Springs: Tinned music wire

Rotor Contact, and Stator (Base) Contacts: Silver alloy

Common Plate, and Common Terminal: Brass, 300μ inch, (7.6 μm) silver plate

Base Terminals: Brass, tin plated

ORDERING INFORMATION

- Series
- Style Letter: L
- Angle of Throw: 45°
- Number of Decks: 01 thru 06 (per Choices chart)
- Poles per Deck: 1 thru 4 (per Choices chart)
- Positions per Pole: 02 thru 08 (per Choices chart)
- Type of Contacts:
 - N = Non-shorting
 - S = Shorting (per Choices chart)
- Stop Arrangement Suffix: (needed only for 1-pole switches with maximum positions)
 - F = Fixed stop between positions 8 and 1
 - *Leave blank for continuous rotation

44 L 45-02-1-08N-F

Available from your local Grayhill Distributor.
For prices and discounts, contact a local Sales Office, an authorized local Distributor or Grayhill.