



TS15P01G - TS15P07G

Single Phase 15.0 AMPS.
Glass Passivated Bridge Rectifiers

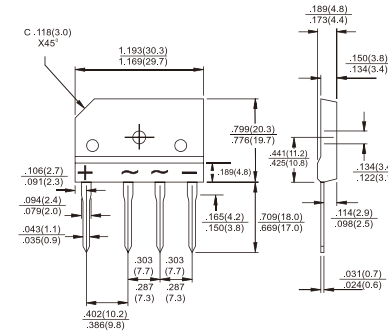
TS-6P

Features

- ✦ UL Recognized File # E-326243
- ✦ Glass passivated junction
- ✦ Ideal for printed circuit board
- ✦ High case dielectric strength of 2000V_{RMS}
- ✦ Plastic material has Underwriters Laboratory Flammability Classification 94V-0
- ✦ Typical IR less than 0.1uA
- ✦ High surge current capability to 240A
- ✦ High temperature soldering guaranteed: 260°C / 10 seconds at 5 lbs., (2.3 kg) tension
- ✦ Green compound with suffix "G" on packing code & prefix "G" on datecode.

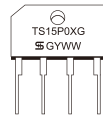
Mechanical Data

- ✦ Case: Molded plastic body
- ✦ Terminals: Pure tin plated , Lead free. Leads solderable per MIL-STD-202 Method 208
- ✦ Weight: 7.15 grams
- ✦ Mounting torque: 8.17 in. lbs. max.



Dimensions in inches and (millimeters)

Marking Diagram



TS15P0XG = Specific Device Code
G = Green Compound
Y = Year
WW = Work Week

Maximum Ratings and Electrical Characteristics

Rating at 25°C ambient temperature unless otherwise specified.

Single phase, half wave, 60 Hz, resistive or inductive load.

For capacitive load, derate current by 20%

Type Number	Symbol	TS15P01G	TS15P02G	TS15P03G	TS15P04G	TS15P05G	TS15P06G	TS15P07G	Units
Maximum Recurrent Peak Reverse Voltage	V_{RRM}	50	100	200	400	600	800	1000	V
Maximum RMS Voltage	V_{RMS}	35	70	140	280	420	560	700	V
Maximum DC Blocking Voltage	V_{DC}	50	100	200	400	600	800	1000	V
Maximum Average Forward Rectified Current @ $T_c=110^\circ\text{C}$	$I_{F(AV)}$	15.0							A
Peak Forward Surge Current, 8.3 ms Single Half Sine-wave Superimposed on Rated Load (JEDEC method)	I_{FSM}	240							A
Rating of fusing ($t < 8.3\text{ms}$)	I^2t	239							A ² S
Maximum Instantaneous Forward Voltage @ 7.5A @ 15A	V_F	1.0 1.1							V
Maximum DC Reverse Current @ $T_A=25^\circ\text{C}$ at Rated DC Blocking Voltage (Note 1) @ $T_A=125^\circ\text{C}$	I_R	10 500							uA uA
Typical Junction Capacitance Per Leg (Note 3)	C_j	90							pF
Typical Thermal Resistance (Note 2)	$R_{\theta JC}$	0.8							°C/W
Operating Temperature Range	T_j	-55 to +150							°C
Storage Temperature Range	T_{STG}	-55 to + 150							°C

Note : 1. Pulse Test with PW=300 usec, 1% Duty Cycle
2. Device mounted on 4" x 5" x 0.25" Al plate heat sink.
3. Measured at 1MHz and applied Reverse bias of 4.0V DC.

Version: H10

RATINGS AND CHARACTERISTIC CURVES (TS15P01G THRU TS15P07G)

FIG.1- MAXIMUM SURGE CURRENT PER LEG

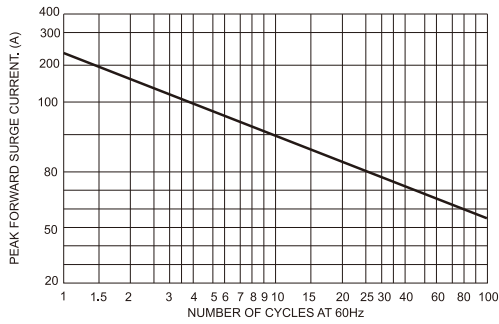


FIG.2- TYPICAL FORWARD CHARACTERISTICS PER LEG

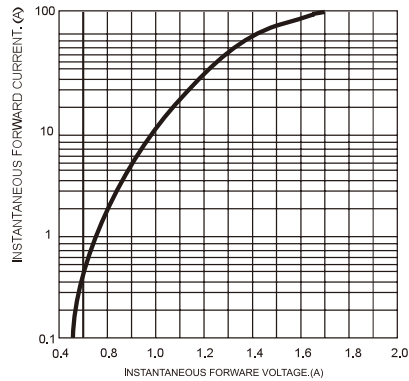


FIG 3 Maximum Derating Curve for Output

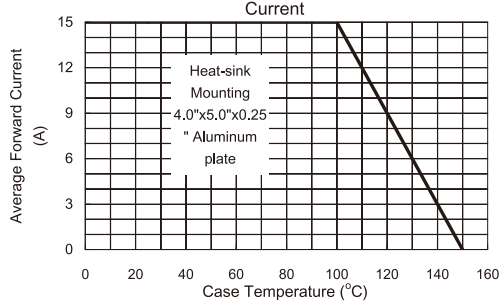


FIG 4 Typical Junction Capacitance

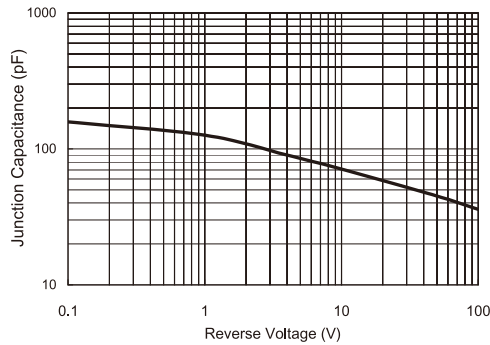


FIG 5 Typical Reverse Characteristics per Leg

