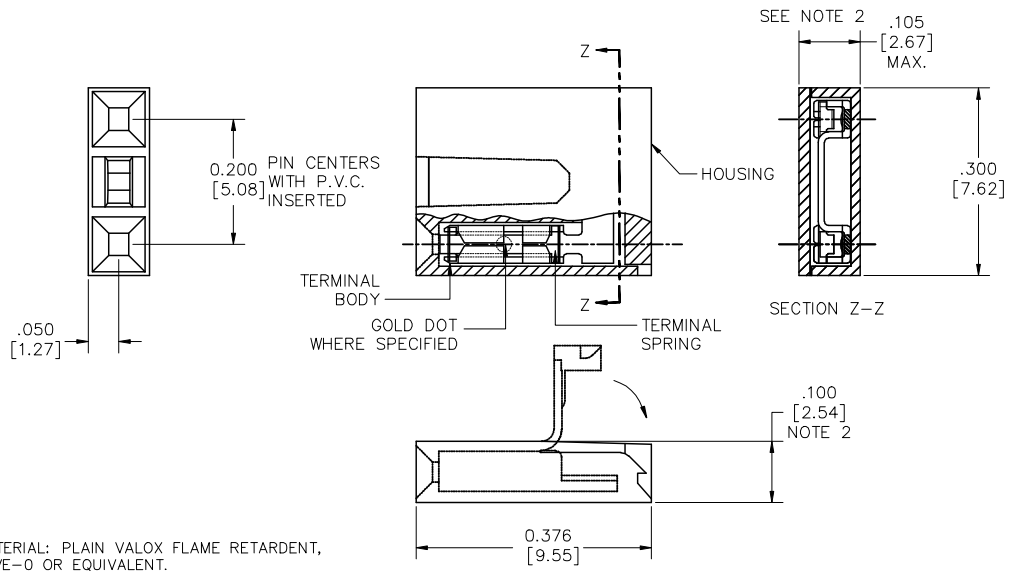


PRODUCT NO.
SEE SHT. 2



NOTES

- HOUSING MATERIAL: PLAIN VALOX FLAME RETARDENT, PER UL 94-VE-0 OR EQUIVALENT. COLOR WHITE
- .100/2.54 MAX. APPLIES TO HOUSING BODY. .105/2.67 MAX. APPLIES TO BODY AND LID, AFTER LID IS CLOSED PER TMS-258-88
- ADD "LF" SUFFIX AT THE END OF PART NUMBERS FOR LEAD FREE OPTION.
- IF "LF" THE P/N THE PRODUCT MEETS EUROPEAN UNION DIRECTIVES AND OTHER COUNTRY REGULATION AS DESCRIBED IN GS-22-008.
- THE PRODUCT IS NOT INTENDED TO BE EXPOSED TO A MANUFACTURING SOLDER PROCESS.

mal't. code		surface	tolerance	projection	product family
		ISO 1302	ISO 146 ISO 1001		JUMPER
lfr	ecp no	dr	date	title	
F	M06-0187	MHT	5/15/06	MINI JUMP	
G	M07-0112	MHT	2/14/07	CONNECTOR ASS'Y 200 cc	
H	M09-0065	MHT	4/13/09	65771	
sheet		revision	H	H	size
index		sheet	1	2	A3

PRODUCT NO. NOTE 3	TERMINAL		TERMINAL SPRING	
	BODY MATERIAL	CONTACT PLATING	MATERIAL	PLATING
65771-001	.010/.025 THK. 1/4 HD. BRASS ALLOY UNS C26000	1.02μ/40μ" AU OVER 1.27μ/50μ" NICKEL	.122/.0048 THK BE-CU ALLOY	GOLD FLASH
65771-002		TIN LEAD	UNS C17200 HEAT TREATED	TIN PLATED
65771-003	—	—	—	—
65771-004	.010/.025 THK. 1/4 HD CU-NI ALLOY UNS C72500	.03/.001 MIN THK. GOLD DOT	.122/.0048 THK BE-CU ALLOY UNS C17200 HEAT TREATED	GOLD FLASH
65771-005	.25/.010 BRASS	.76μ/30μ" AU		GOLD FLASH

OBsolete

LEAD FREE OPTION

PRODUCT NO.	TERMINAL		TERMINAL SPRING	
	BODY MATERIAL	CONTACT PLATING	MATERIAL	PLATING
65771-001LF	.010/.025 THK. 1/4 HD. BRASS ALLOY UNS C26000	1.02μ/40μ" AU OVER 1.27μ/50μ" NICKEL	.122/.0048 THK BE-CU ALLOY	GOLD FLASH
65771-002LF		TIN	UNS C17200 HEAT TREATED	TIN PLATED
65771-004LF	.010/.025 THK. 1/4 HD CU-NI ALLOY UNS C72500	.03/.001 MIN THK. GOLD DOT	.122/.0048 THK BE-CU ALLOY UNS C17200 HEAT TREATED	GOLD FLASH
65771-005LF	.25/.010 BRASS	.76μ/30μ" AU		GOLD FLASH

mal't. code		surface ISO 1302	tolerance ISO 406 ISO 1001	projection	product family JUMPER
lfr	ecp no	dr	date	INCH/MM	title MINI JUMP CONNECTOR ASS'Y 200 cc
H				scale 10:1	dwg no 65771
					sheet 2 of 2
					size A3
					type Product Customer Drawing
sheet index	revision sheet				