

Displaytech Ltd.

Website: www.displaytech-us.com

LCD Module

Product Specification

Product: 1.8" TFT Display Module (128RGBx160DOTS)

Contents in this document are subject to change without notice. No part of this document may be reproduced or transmitted in any form or by any means, electronic or mechanical, for any purpose, without the express written permission of Displaytech Ltd.

11 April 2008.

REVISION RECORD

VERSION	CHANGES	DATE
1.0	Initial revision	24 April 2006
2.0	Complete new module	9 January 2008
3.0	Data updated on: General specifications, Interface description, Electrical characteristics, Optical characteristics, and Backlight specification	11 April 2008

Table of Content

1. INTRODUCTION -----	Page 4
2. GENERAL SPECIFICATIONS -----	Page 4
3. MECHANICAL DRAWING -----	Page 5
4. INTERFACE DESCRIPTION -----	Page 6
5. ABSOLUTE MAXIMUM RATINGS -----	Page 7
6. ELECTRICAL CHARACTERISTICS -----	Page 7
7. DISPLAY CONTROLLER/POWER SUPPLY TIMING -----	Page 7
8. OPERATIONAL EMC REQUIREMENTS -----	Page 8
9. OPTICAL CHARACTERISTICS -----	Page 8
10. BACKLIGHT SPECIFICATION -----	Page 10
11. SAFETY PRECAUTION -----	Page 10

1. Introduction

SDT018TFT is a display module that contains a TFT display with a 160 * 128 RGB resolution. The driver used for this project is the Samsung **S6D0151 or compatible** and can display 262K colors. The driver is mounted on the glass and the interconnection via FPC including components to drive the display module.

2. General specifications

Item	Specification	Unit
LCD mode	Transmissive	---
Resolution	128(RGB)	Line
	160	Line
Viewing area	30.232	mm
	36.79	mm
Active area	28.032	mm
	35.04	mm
Driver IC	S6D0151	---
Interface type	System parallel / RGB (1)	---
Colours	262K	---
Operation temperature range	-20~70	°C
Storage temperature range	-30~80	°C

Remarks:

- (1) Serial interface is available, but not recommendable, as the speed of it is very slow.
- (2) Recommended mating connector: Hirose FH19SC-45S-0.5SH, FH12S-45S-0.5SH; or Molex 0512964593, 0512964594; or equivalent
- (3) Orientation: both Portrait and Landscape mode are available (controlled by software, refer to IC spec)

Component Life Cycle

- 1) Storage Life: min. 1 Year
- 2) Operation Life (*1): min. 40 x 10³ h (22h per day x 7 days per week x 52 weeks / year x 5 years)
- 3) Backlight Operation Life (*2): min. 5 x 10³ h
- 4) Storage and Operation Life Times are defined for a temperature of +25°C

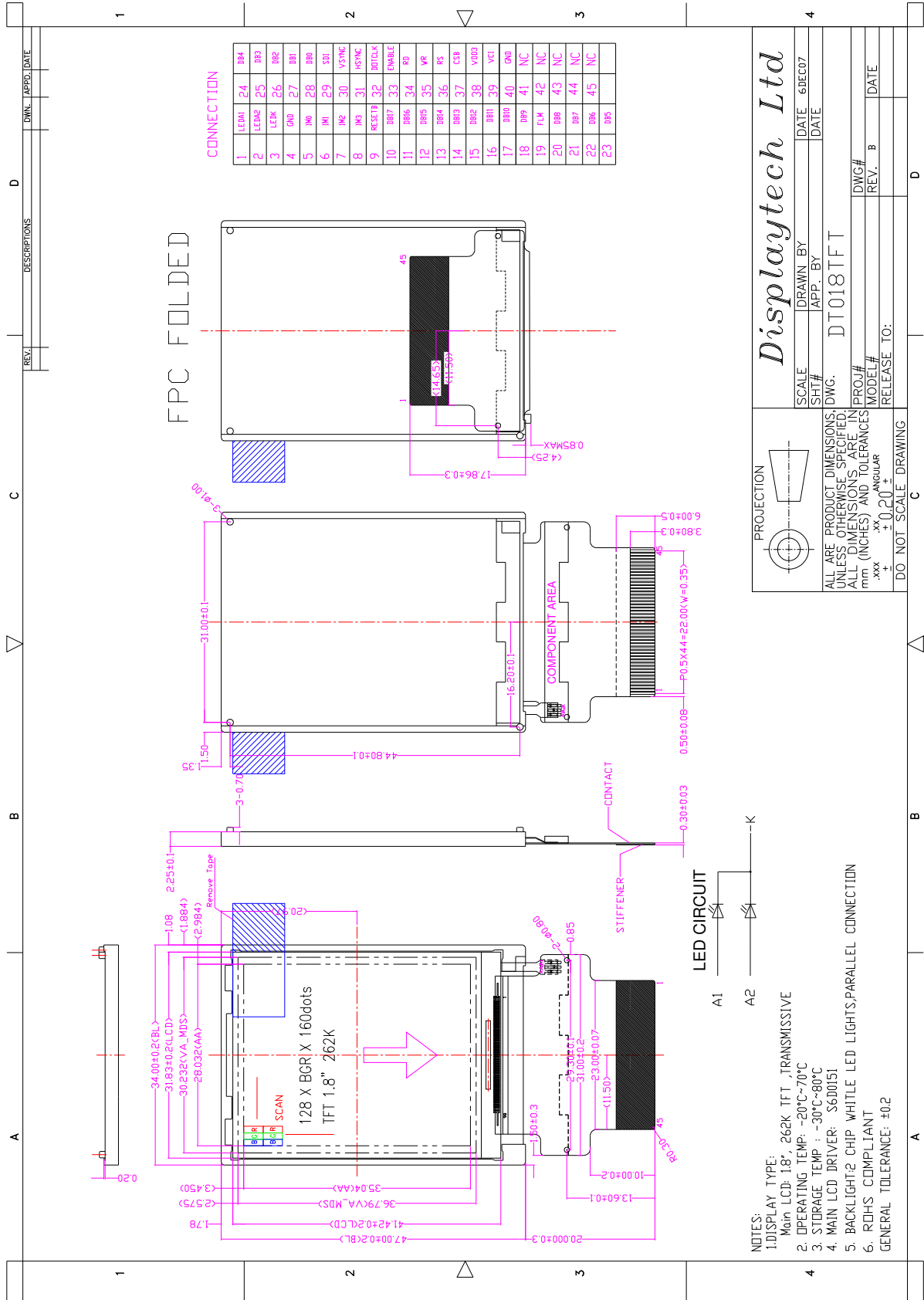
Notes:

*1. Operation life ends when one of the listed faults occurs:

- The on/off response-times reach 1.5 times of the max. value specified for a new display
- The contrast is reduced to 0.5 of the original contrast value
- Loss of function
- The number of cosmetic defects exceeds the maximum defined

*2. Backlight Operation Life ends when the backlight luminance is reduced to 0.7 of the original value

3. Mechanical Drawing



4. Interface Description

Pin no	Symbol	Level	Description					
1	LEDA1	-	LED Backlight Anode					
2	LEDA2	-	LED Backlight Anode					
3	LEDK	-	LED Backlight Cathode					
4	GND	0V	Ground					
5 ~ 8	IM0 ~ IM3	H/L	IM3	IM2	IM1	IM0	Interface mode	DB Pin
			0	0	1	0	80-system, 16 bit	DB[17:10], DB[8:1]
			0	0	1	1	80-system, 8 bit	DB[17:10]
			1	0	1	0	80-system, 18 bit	DB[17:0]
			1	0	1	1	80-system, 9 bit	DB[17:9]
9	RESETB	H/L	Reset Signal Pin					
10 ~ 18	DB17 ~ DB9	H/L	Data Bus					
19	FLM	H/L	Frame head to synchronize RAM data write operation with the frame head position.					
20 ~ 28	DB8 ~ DB0	H/L	Data Bus					
29	SDI	H/L	Serial Data Input					
30	VSYNC	H/L	Frame synchronous signal					
31	HSYNC	H/L	Line synchronous signal					
32	DOTCLK	H/L	Dot Clock Signal					
33	ENABLE	H/L	Enable Signal					
34	RD	H/L	Read signal					
35	WR	H/L	Write signal					
36	RS	H/L	Register Select Signal					
37	CSB	H/L	Chip Select Signal					
38	VDD3	2.8V	Power Supply					
39	VC1	2.8V	Liquid crystal analog circuit power supply.					
40	GND	0V	Ground					
41~45	NC	-	No connection					

5. Absolute Maximum Ratings

Item	Symbol	Rating	Unit
Supply voltage range	V_{DD3}/V_{C1}	-0.3 to +5.5	V
Input voltage range	V_{in}	-0.3 to $V_{DD3} + 0.5$	V
Operating Ambient Temperature	T_{OP}	-20 ~ +70	°C
Operating Ambient Humidity	H_{OP}	10 ~ 90 (Max 60°C)	% RH
Storage Temperature	T_{STG}	-30 ~ +80	°C
Storage Humidity	H_{STG}	10 ~ 90 (Max 60°C)	% RH

6. Electrical Characteristics

DC Characteristics

Item	Symbol	Rating	Unit
Power supply to logic	V_{C1} / V_{DD3}	2.7 to 2.9	V
Input current	I_{DD}	6.67 max	mA
Input voltage "H"	V_{IH}	$0.8V_{DD3}$ to V_{DD3}	V
Input voltage "L"	V_{IL}	0 to $0.2V_{DD3}$	V
Output voltage "H"	V_{OH}	$0.7V_{DD3}$ to V_{DD3}	V
Output voltage "L"	V_{OL}	0 to $0.3V_{DD3}$	V

7. Display Controller /Power Supply Timing

See Display Controller Specification: **SAMSUNG S6D0151**

8. Operational EMC Requirements

The operational EMC immunity requirements and emission limits for DISPLAYTECH modules are provided in table 1: EMC specification for operational modules.

Table 1. EMC specification for operational modules

EMC phenomena	REFERENCE standard	Frequency range	Level/ Limit	Test specification	Performance criteria
Electromagnetic field	IEC 61000-4-3	30MHz-1000MHz	3 V/m	1kHz sine, 80% AM	C
EFT/Burst	IEC 61000-4-4	n.a.	10 V	-8us/50us -10ns/100ns	C C
Electrostatic Discharge*	IEC61000-4-2	n.a.	4 kV/ 8 kV	Contact/ Air	C
Conducted RF signals	IEC 61000-4-6	150kHz-30MHz	1 V	1kHz sine, 80% AM	C
Radiated emission	IEC 61000-6-4	30 MHz-1000MHz	47 dBuV	d = 10 m	n.a.

After a charge of 4kV, the display module is allowed to go down for 2 seconds and need to comeback again. With 8kV the display module is allowed to go down and has to comeback after a reset.

9. Optical Characteristics

Item	Symbol	Condition	Min	Typ	Max	Unit	Remark	Note
Response Time	Tr + Tf	θ=0° Ø=0° Ta=25°C	---	23.7	35.55	ms	Fig 2	4
Contrast ratio	Cr		367	734	---	---		1
Luminance Uniformity	δ White		81	91	---	%		3
Surface Luminance	Lv		172	216	---	cd/m ²		2
Viewing Angle range	θ	Ø=90°	70	80	---	deg	Fig 1	6
		Ø=270°	15	25	---			
		Ø=0°	38	48	---			
		Ø=180°	38	48	---			
CIE (x,y) Chromaticity	Red	x	0.578	0.628	0.678			5
		y	0.308	0.358	0.408			
	Green	x	0.280	0.330	0.380			
		y	0.590	0.610	0.690			
	Blue	x	0.097	0.147	0.197			
		y	0.040	0.090	0.140			
	White	x	0.248	0.308	0.368			
		y	0.260	0.320	0.380			

Note 1: Contrast Ratio = $\frac{\text{Average Surface Luminance with all white pixels (P}_1, P_2, P_3, P_4, P_5)}{\text{Average Surface Luminance with all black pixels (P}_1, P_2, P_3, P_4, P_5)}$

Note 2: Surface luminance is the LCD surface from the surface with all pixels displaying white.
 $L_v = \text{Average Surface Luminance with all white pixels (P}_1, P_2, P_3, P_4, P_5)$

Note 3: The uniformity in surface luminance, δ WHITE is determined by measuring luminance at each test position 1 through 5, and then dividing the maximum luminance of 5 points luminance by minimum luminance of 5 points luminance.
 $\delta \text{ WHITE} = \frac{\text{Minimum Surface Luminance with all white pixels (P}_1, P_2, P_3, P_4, P_5)}{\text{Maximum Surface Luminance with all white pixels (P}_1, P_2, P_3, P_4, P_5)}$

Note 4: Response time is the time required for the display to transition from White to black (Rise Time, T_r) and from black to white (Decay Time, T_f). For additional information see FIG 2.

Note 5: CIE (x, y) chromaticity: The x,y value is determined by measuring luminance at each test position 1 through 5, and then taking average value

Note 6: Viewing angle is the angle at which the contrast ratio is greater than 2. For TFT module the contrast ratio is greater than 10. The angles are determined for the horizontal or x axis and the vertical or y axis with respect to the z axis which is normal to the LCD surface. For additional information see Fig 1.

Fig.1 (Definition of Viewing Angle)

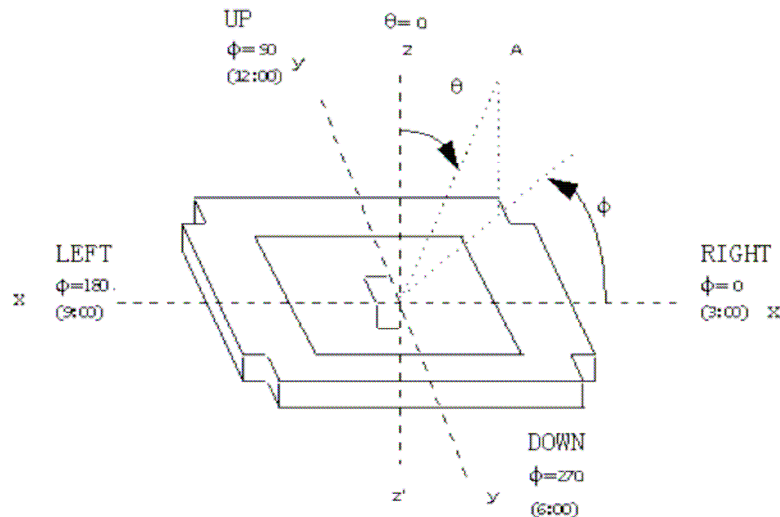
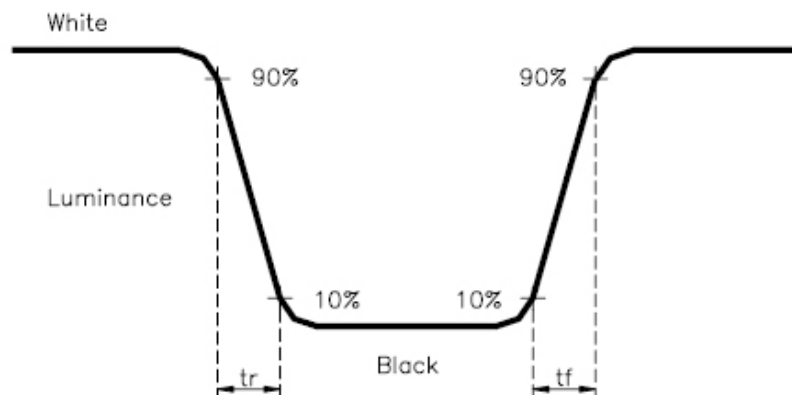


Fig. 2 (The response time is defined as the time interval between the 10% and 90% amplitudes. Refer to figure below.)



10. Backlight Specification

ITEM	PARAMETER		UNIT
COLOR	WHITE		
CHROMATICITY COORDINATE	X=0.283-0.330	Y=0.276-0.339	
AVERAGE LUMINOUS INTENSITY (LV)	2800 to 3800 (IF 30mA)		cd/m ²
NO.OF LED SMT	2		---
FORWARD VOLTAGE (VF)	3.0 to 3.4 (IF 30mA)		V

11. Safety Precaution

Handling precautions:

- This device is susceptible to Electro-Static Discharge (ESD) damage. Observe Anti-Static precautions.

Power supply precautions:

- Identify and, at all times, observe absolute maximum ratings for both logic and LC drivers. Note that there is some variance between models.
- Prevent the application of reverse polarity to VCC and GND, however briefly.
- Use a clean power source free from transients. Power up conditions are occasionally “jolting” and may exceed the maximum ratings of the modules.
- The VCC power of the module should also supply the power to all devices that may access the display. Don't allow the data bus to be driven when the logic supply to the module is turned off.

Operating precautions:

- DO NOT plug or unplug the module when the system is powered up.
- Minimize the cable length between the module and host MPU.
- Operate the module within the limits of the modules temperature specifications.

Mechanical/Environmental precautions:

- Improper soldering is the major cause of module difficulty. Use of flux cleaner is not recommended as they may seep under the elastomeric connection and cause display failure.
- Mount the module so that it is free from torque and mechanical stress.
- Surface of the LCD panel should not be touched or scratched. The display front surface is an easily scratched, plastic polarizer. Avoid contact and clean only when necessary with soft, absorbent cotton dampened with petroleum benzene.
- Always employ anti-static procedure while handling the module.
- Prevent moisture build-up upon the module and observe the environmental constraints for storage temperature and humidity.
- Do not store in direct sunlight
- If leakage of the liquid crystal material should occur, avoid contact with this material, particularly ingestion. If the body or clothing becomes contaminated by the liquid crystal material, wash thoroughly with water and soap