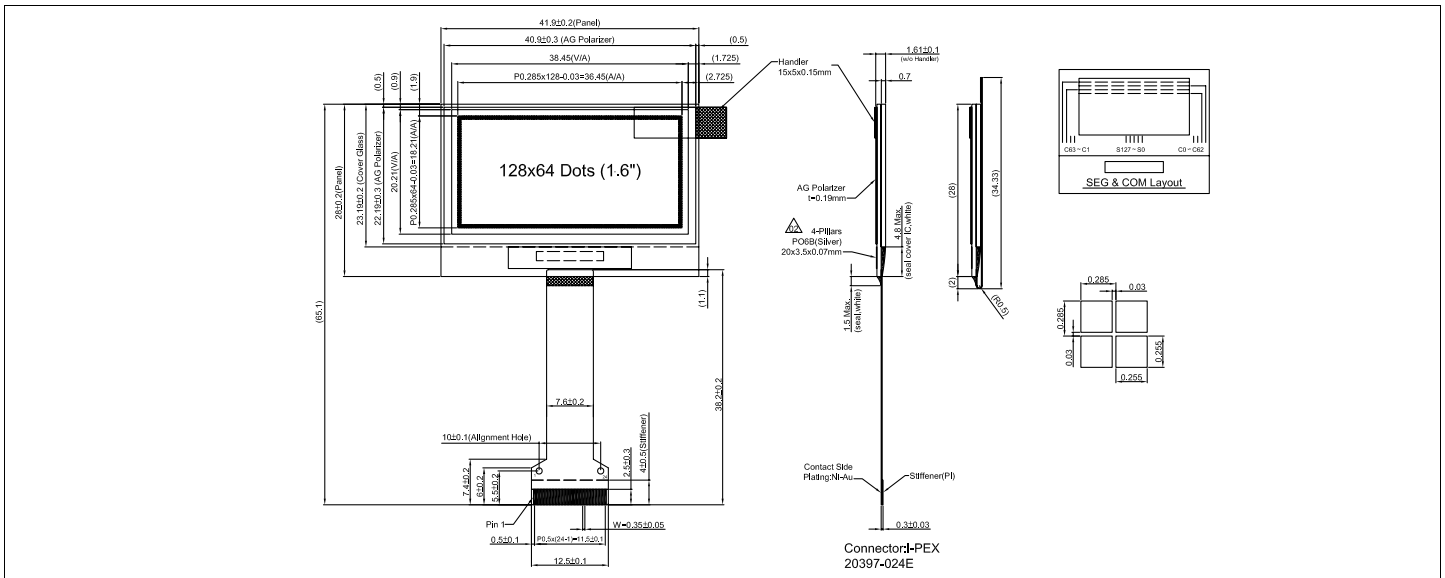


HDR12864-4

Dimensional Drawing

128 X 64 Dots Graphic, Yellow OLED Display



Features

- Viewing Angle.....Wide (160 degrees)
- High Contrast.....2000:1
- Fast Response Time.....10 usec
- Built-in DC-DC Converter
- Built-in Controller.....SSD1325

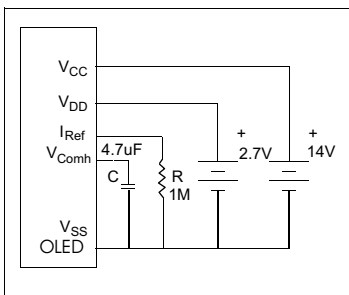
Physical Data

- Module Size.....41.9W x65.1H x 1.61T mm
- Viewing Area Size.....38.4W x 20.21H mm
- Dot Pitch.....0.285W x 0.285H mm
- Dot Size.....0.255W x 0.255H mm
- Weight.....3.75gm

Electrical Characteristics (VCC = 14 ± 5% 25°C)

PARAMETER	SYM	CONDITION	MIN	TYP	MAX	UNIT
OPERATING VOLTAGE	VDD	-	2.4	2.7	3.5	V
OPERATING VOLTAGE	VCC	-	13.5	14	14.5	V
INPUT HIGH VOLTAGE	V _{IH}	-	0.8*V _{DD}	-	V _{DD}	V
INPUT LOW VOLTAGE	V _{IL}	-	0	-	0.2V _{DD}	V
OPERATING CURRENT	I _{DD}	All pixels on	-	-	650	µA
OPERATING CURRENT	I _{CC}	All pixels on	-	18	20	mA
POWER CONSUMPTION	P _D	All pixels on	-	252	280	mW
BRIGHTNESS	L	Average	60	80	-	cd/m ²
DRIVE METHOD	1/64 Duty					

Power Supply



Absolute Maximum Ratings

PARAMETER	SYMBOL	MIN	MAX	UNIT
SUPPLY VOLTAGE	VDD	-0.3	3.5	V
SUPPLY VOLTAGE	VCC	8	16	V
INPUT VOLTAGE	V _{IN}	-0.3	V _{DD} + 0.3	V
OPERATING TEMPERATURE	T _{OP}	-40	70	°C
STORAGE TEMPERATURE	T _{STG}	-40	85	°C
LIFE TIME (60/100 Cd/m ²)		40/24k	-	Hrs

Pin Connections

PIN NO.	SYMBOL	FUNCTION	
1	VSS	I	Ground Pin
2	VSL	O	SEG Signal
3	VCC	I	Power Supply for OLED driver
4	VCOMH	I	COM - Voltage Reference Pin
5	VDD	I	Power Supply for internal logic
6	Bs1	H/L	MCU interface selection input
7	Bs2	H/L	MCU interface selection input
8	CS#	L	Chip select input
9	RES#	L	Hardware reset input
10	D/C#	H/L	Data-command control input
11	R/WR#	L	Write data input
12	E/RD#	L	Read data input
13	D0	H/L	Bi-directional data bus
14	D1	H/L	Bi-directional data bus
15	D2	H/L	Bi-directional data bus
16	D3	H/L	Bi-directional data bus
17	D4	H/L	Bi-directional data bus
18	D5	H/L	Bi-directional data bus
19	D6	H/L	Bi-directional data bus
20	D7	H/L	Bi-directional data bus
21	IREF	I	Reference input (connect recom. Res. R)
22	VCC	I	Power Supply for logic
23	N/C	-	No Connection
24	VSS	I	Ground Pin

