

- Status Indicating LED on X4 Series and 4A Fuse
- UL, CSA, and CE
- Zero Cross Switching

Solid state I/O switching modules deliver an electrically clean, photo-isolated, noise-free "output" interface from logic level control systems to external loads such as motors, valves, solenoids, etc. -- or an "input" interface from the load or sensors to microprocessor or computer-based logic level systems. Designed for long, reliable service in demanding industrial environments.

INPUT SPECIFICATIONS

	OAC5 (S)MOAC5 X4OAC5	OAC15 (S)MOAC15 X4OAC15	OAC24 (S)MOAC24 X4OAC24	OAC5A (S)MOAC5A X4OAC5A	OAC15A (S)MOAC15A X4OAC15A	OAC24A (S)MOAC24A X4OAC24A
Nominal Input Voltage [Vdc]	5	15	24	5	15	24
Min. Input Voltage @ pin 3 [Vdc] (X4 Series)	3.0 (4)	8.5 (10)	16.5 (18)	3.0 (4)	8.5 (10)	16.5 (18)
Max. Input Voltage @ pin 3 [Vdc] (X4 Series)	8.0 (7.5)	18.5 (20)	29.0 (30.5)	8.0 (7.5)	18.5 (20)	29.0 (30.5)
Must Turn Off Voltage [Vdc]	1.0	1.0	1.0	1.0	1.0	1.0
Typical Input Current [mA _{dc}]	10	10	10	10	10	10
Max. Input Current [mA _{dc}]	27	20	13.5	27	20	
Nominal Input Resistance [ohm]	240	900	2.2K	240	900	2.2K

OUTPUT SPECIFICATIONS

Nominal Line Voltage [V _{rms}]	120	120	120	240	240	240
Max. Line Voltage [V _{rms}]	140	140	140	280	280	280
Min. Line Voltage [V _{rms}]	12	12	12	24	24	24
Max. Peak Off-State Voltage [V _{peak}]	400	400	400	600	600	600
Max. Off-State Leakage Current [mA _{rms}]	2.5	2.5	2.5	4.5	4.5	4.5
Static Off-State (dv/dt)[V/μs]	200	200	200	200	200	200
Max. On-State Current [A _{rms}]	3	3	3	3	3	3
Min. On-State Current [mA _{rms}]	50	50	50	50	50	50
Max. One Cycle Surge [A _{peak}]	100	100	100	100	100	100
Peak On-State Voltage [V _{peak}]	1.6	1.6	1.6	1.6	1.6	1.6
Max. Turn-On Time [cycles]	1/2	1/2	1/2	1/2	1/2	1/2
Max Turn-Off Time [cycles]	1/2	1/2	1/2	1/2	1/2	1/2
Derating [mA per ° above 25° C]	33	33	33	33	33	33
Fuse Rating [fast-acting] (X4 Series Only)	4A	4A	4A	4A	4A	4A

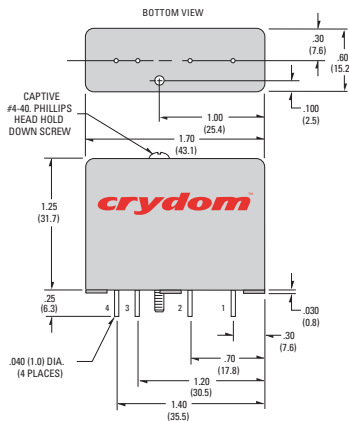
© 2007 CRYDOM Inc., Specifications subject to change without notice.

GENERAL SPECIFICATIONS

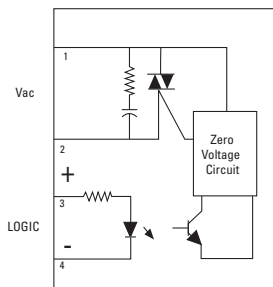
Operating temperature range	-30 to +80°C
Storage temperature range	-40 to +100°C
Isolation	4,000 Vrms
Capacitance input to output	8 pF
Line frequency range	47 to 63 Hz
Package Color	Black

WIRING & MECHANICAL DIAGRAMS

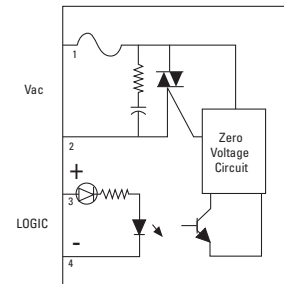
Standard Series, OAC



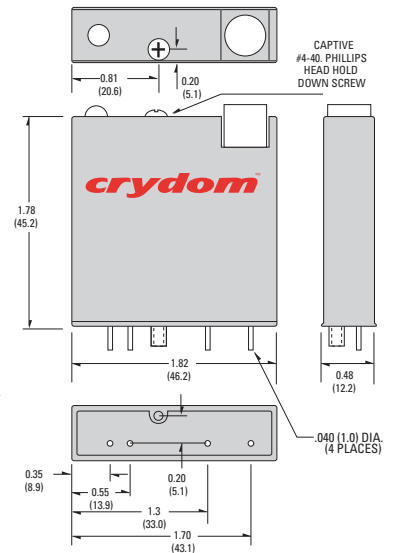
Standard and Mini Pack



X4 Series

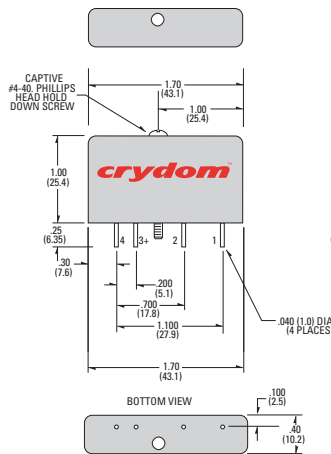


X4 Series, X4OAC

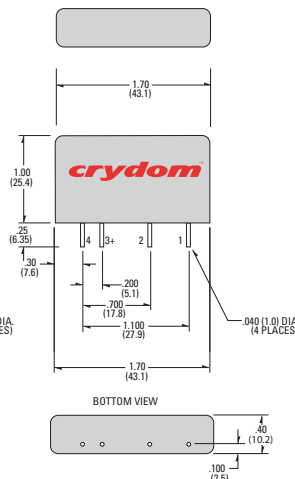


MINI-PACK Series, (S)MOAC

SM Prefix



M Prefix



APPLICATION NOTES

- Do not install or remove modules in live (electrically hot) circuits. High voltage may be present.
- An externally located commutating diode must be installed across inductive loads
- I/O module boards also available

All dimensions are in inches (millimeters)

© 2007 CRYDOM Inc., Specifications subject to change without notice.

For recommended applications and more information contact:
USA: Sales Support (877) 502-5500 Tech Support (877) 702-7700 FAX (619) 710-8540
 Crydom Inc., 2320 Paseo de las Americas, Ste. 201, San Diego, CA 92154
Email: sales@crydom.com **WEB SITE:** http://www.crydom.com
UK: +44 (0)1202 606030 • **FAX** +44 (0)1202 606035 Crydom SSR Ltd., Arena Business Centre,
 Holyrood Close, Poole, Dorset BH17 7FJ, Email: intsales@crydom.com.
GERMANY: +49 (0)180 3000 506

ANNEX – ENVIRONMENTAL INFORMATION:

The environmental information disclosed in this annex including the EIP Pollution logo are in compliance with People's Republic of China Electronic Industry Standard SJ/T11364 – 2006, Marking for Control of Pollution Caused by Electronic Information Products.

Part Name	Toxic or hazardous Substance and Elements					
	Lead (Pb)	Mercury (Hg)	Cadmium (Cd)	Hexavalent Chromium (Cr (VI))	Polybrominated biphenyls (PBB)	Polybrominated diphenyl ethers (PBDE)
Semiconductor die	X	O	O	O	O	O
Solder	X	O	O	O	O	O

附件 - 环保信息:

此附件所标示的包括电子信息产品污染图标的环保信息符合中华人民共和国电子行业标准 **SJ/T11364 - 2006**, 电子信息产品污染控制标识要求

部件名称	有毒有害物质或元素					
	铅 (Pb)	汞 (Hg)	镉 (Cd)	六价铬 (Cr (VI))	多溴联苯 (PBB)	多溴二苯醚 (PBDE)
半导体芯片	X	O	O	O	O	O
焊接点	X	O	O	O	O	O

