



111SM2



Actual product appearance may vary.

SM Series Subminiature Basic Switch, Single Pole Double Throw (SPDT), 125 Vac, 1 A, Roller Lever Actuator, Solder Termination

Features

- Long operating life
- Elongated mounting hole for easier, more accurate mounting
- Choice of actuation (plunger, as well as a variety of integral and auxiliary actuators)
- Choice of electrical termination (solder, quick connect, PCB)
- Choice of operating characteristics (sensitive differential travel as low as 0,0254 mm [0.001 in] maximum, low operating force to 0,56 N [2.0 oz] maximum)
- Optional series constructions available (gold contacts for low energy switching, bifurcated gold contacts for maximum reliability, power load switching capability to 11 A)
- MIL-PFR-8805 qualified listings available

Potential Applications

- Aerospace
- Instrumentation
- Appliances
- Vending machines
- Timing devices
- Office equipment
- Computer/business equipment
- Test instruments
- Medical/dental equipment
- Communications equipment
- HVAC equipment
- Manually operated devices
- Valves

Description

MICRO SWITCH™ SM Series subminiature basic switches are used for simple or precision on/off application needs. The MICRO SWITCH™ SM Series switches are slightly larger than the MICRO SWITCH™ SX Series switches. These switches combine small size and light weight with ample electrical capacity, precision operation and long life.

Product Specifications

Product Specifications	
Switch Type	MICRO SWITCH™ Subminiature 12,7 mm H x 6,35 mm W x 20,3 mm L [0.5 in H x 0.25 in W x 0.8 in L]
Sealed	No
Ampere Rating	5 A
Circuitry	Single Pole Double Throw (SPDT)
Actuator	Roller Lever
Termination	Solder

Operating Temperature Range	-53 °C to 121 °C [-65 °F to 250 °F]
Voltage	125 Vac
Approvals	CE,CSA,UL,ENEC
Actuator Length	3,05 mm [0.12 in]
Contact Type	Silver
Operating Force (O.F.)	1,95 N [7.0 oz] max.
Release Force (R.F.)	0,56 N [2.0 oz] min.
Pretravel (P.T.)	5,56 mm [0.219 in] max.
Overtravel (O.T.)	0,76 mm [0.030 in] min.
Differential Travel (D.T.)	0,64 mm [0.025 in] max.
Operating Position (O.P.)	14,2 mm ± 0,76 mm [0.560 in ± 0.030 in]
Housing Material	General Purpose Phenolic
High Temperature	121 °C [250 °F]
CE mark	61058-1
UL File #	E12252
CSA File #	LR41372
Agency Approvals and Standards	1054
Mounting Screw Size	22,1 mm [0.087 in]
Mounting Centers	9,65 mm [0.38 in]
Maximum Tightening Torque	0,26 N m [2.3 in lb]
Weight	3,63 g [0.008 lb]
Package Height	12,4 mm [0.49 in]
Package Width	6,35 mm [0.25 in]
Package Length	19,8 mm [0.78 in]
Recommended For	Flexible leaf with roller
Availability	Global
UNSPSC Code	30211905
UNSPSC Commodity	30211905 Snap switches
Series Name	SM

MICRO SWITCH

A DIVISION OF MINNEAPOLIS-HONEYWELL REGULATOR COMPANY
PROPOON, ILLINOIS

FED. MFR. CODE 91929

SWITCH-BASIC

CATALOG LISTING

111SM2

111SM2

PAGE 1 OF 1

REPLACES

RELEASE NO. SR 9566

CHECK

DES 5, APR '61

CHECK DES 12, APR '95

CHECK DES 5, APR '61

CHECK DES 5, APR '61

CHECK DES 5, APR '61

CHECK DES 5, APR '61

M

DRAWING NUMBER

X8

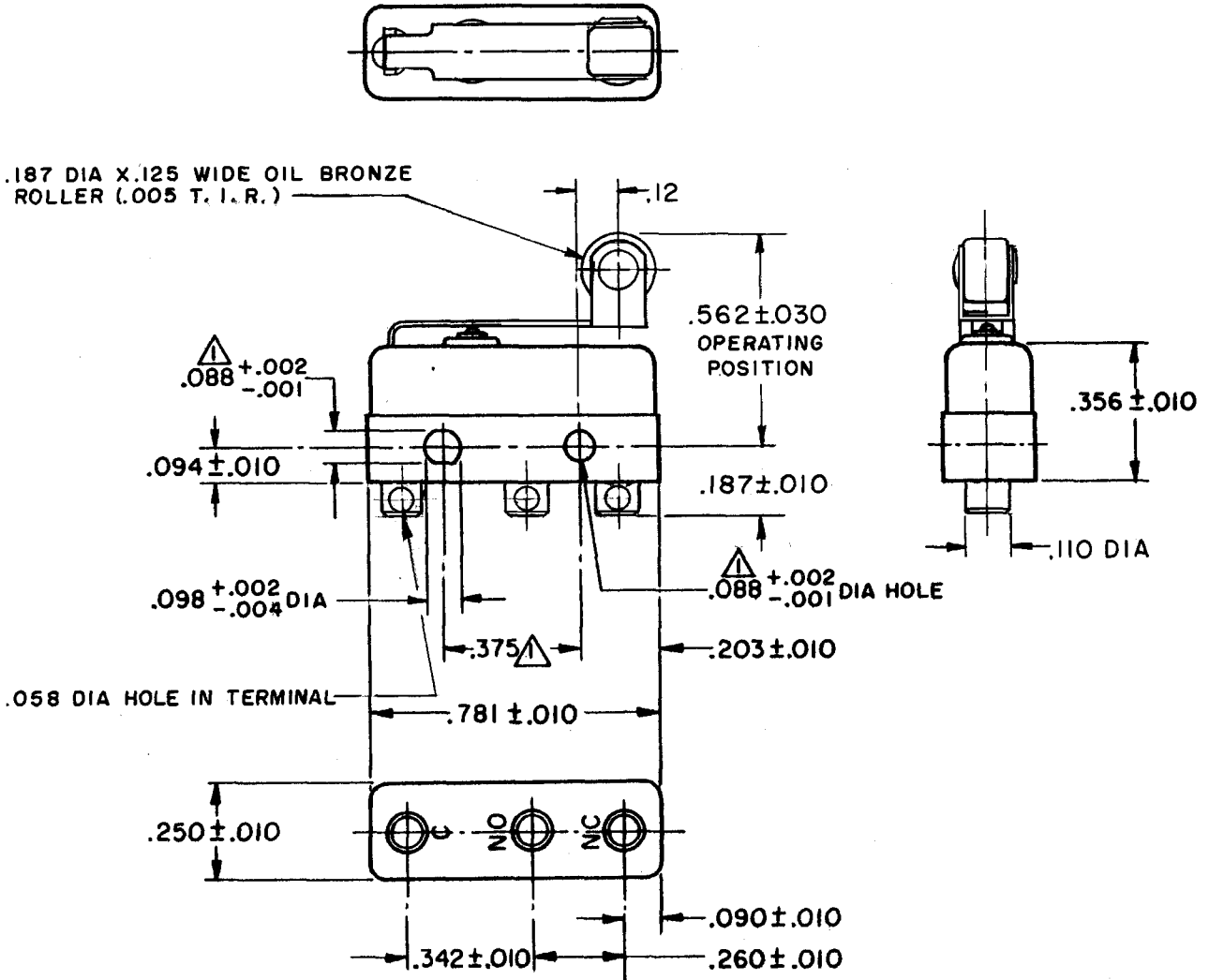
5

ISSUE

8

REVISIONS

A	0029449		
R	C	R	
12	SEPT 72		
B	CO-77768		
S	A	D	
12	JUL 94		
C	0079612		
S	A	D	
12	APR 95		
D	205616		
G	JW		
21	MAY 02		



NOTE -

- ▲ - MOUNTING HOLES WILL ACCEPT PINS OR SCREWS OF $.087$ MAX DIA ON $.375 \pm .002$ CENTERS
- 2 - TERMINALS ARE PLATED FOR SOLDERING

THIS DRAWING COVERS A PROPRIETARY ITEM AND IS THE PROPERTY OF MICRO SWITCH, A DIVISION OF MINNEAPOLIS-HONEYWELL REGULATOR CO. THIS DRAWING IS NOT TO BE COPIED OR USED WITHOUT THE APPROVAL OF MICRO SWITCH.

CHARACTERISTICS		ELECTRICAL DATA		SCALE 2 TO 1
OPERATING FORCE	-----7 OZ MAX	CONTACT ARRANGEMENT	BREAK DISTANCE	DO NOT SCALE PRINT
RELEASE FORCE	-----2 OZ MIN	S P D T	.010 MIN	UNLESS OTHERWISE SPECIFIED
PRETRAVEL	-----.219 MAX	30 VOLTS DC RATING		DIMENSIONS ARE IN INCHES
DIFFERENTIAL TRAVEL	-----.025 MAX	INDUCTIVE	SEA LEVEL ----- 3 AMP	TOLERANCES ARE:
OVERTRAVEL	-----.030 MIN	RESISTIVE	50,000 FT. ----- 2.5 AMP	ONE PLACE (.0) ±.030
		MAXIMUM INRUSH	SEA LEVEL ----- 5 AMP	TWO PLACE (.00) ±.015
			50,000 FT. ----- 5 AMP	THREE PLACE (.000) ±.005
			----- 24 AMP	ANGLES ±
		L4	5A 250 VAC ~	WEIGHT .008 LB MAX

RASTER

O-50378

DRAWN

MBF 5 APRIL 61