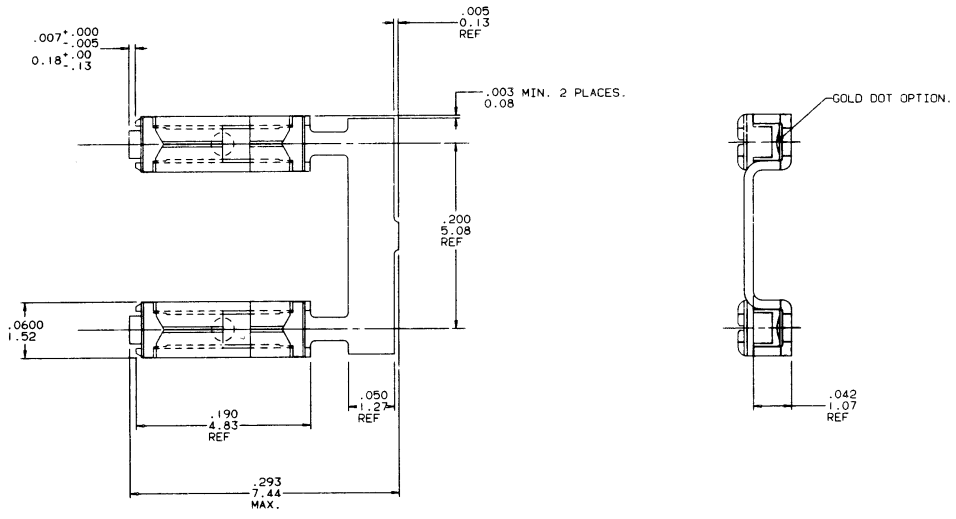


PRODUCT NO	TERMINAL BODY	TERMINAL SPRING
75800-001	1/4 HARD BRASS WITH GOLD FLASH AND 40 μ /1.02 μ Au IN CONTACT AREA.	.0048/.122 THICK HEAT TREATED BE-CU WITH GOLD FLASH.
75800-002	1/4 HARD BRASS WITH TIN-LEAD PLATING.	.0048/.122 THICK HEAT TREATED BE-CU WITH TIN PLATING.
75800-003	O B S O L E T E	
75800-004	1/4 HARD Cu Ni WITH .001/.03 MIN THICK GOLD DOT.	.0048/.122 THICK HEAT TREATED BE-CU WITH GOLD FLASH.

REVISIONS			
REV	DESCRIPTION	BY	DATE
A	RELEASE-REDRAW	JGS	5/6/91



SHEET INDEX		ISSUE A											CUSTOMER COPY	
SH NO 1		1											CODE IDENT 22526	
MODEL 1		DO NOT SCALE DRAWING		TOLERANCE UNLESS OTHERWISE NOTED		INCH/MM		MATERIAL		DR J. SHREINER		DATE 9/8/91		TITLE MINI JUMP TERMINAL .200 C.C.
				LINEAR		.001/.01/.01-.3				ENGR M. HAHN		DATE 5/6/91		
TABULATION SHEETS REQUIRED		YES NO		THIRD ANGLE PROJECTION		INCH MM		FINISH		ENGR M. HAHN		DATE 5/6/91		SCALE SIZE DWG NO 20/1 D 75800
								ANGLES 0° ±2°		APPR M. HAHN		DATE 5/6/91		

NOTE: This drawing is the property of and contains proprietary designs of THE DUPONT COMPANY. No part of this drawing shall be used in any way without the written consent of DUPONT ELECTRONICS, New Cumberland, PA.

PDM: Rev:A STATUS:Released Printed: Dec 01, 2010