

AC Connectors

# SR Series



UL Recognized  
CSA Certified  
VDE Approved



## SR Series

The SR series includes a full line of popular AC receptacles. These male and female power line connectors include snap-in and flange mounted models.

## Specifications

<b>Operating voltages:</b>	120/250 VAC
<b>Materials:</b>	
<b>Insulator</b>	Thermoplastic (UL V-2 flame class)
<b>Prongs</b>	Solid brass, nickel plated
<b>Terminals</b>	Brass, tin plated
<b>Temperature Rating:</b>	For "cold" connections, 65°C

## AC Connectors

Part Number	Current Rating @UL/CSA	Current Rating @VDE	Input Configuration	Output Terminals		Mounting	
				Style	Terminal Dimensions (in./mm)	Style	Panel Thickness (in./mm)▲
6ESRM-P	15	10	Male	PC Terminals	Fit .063/1.6 Hole	Flange	–
6ESRM-3	15	10	Male	Quick Disconnect	25 x .032/ 6.3 x 0.8	Flange	–
6ESRMC2	15	10	Male	Quick Disconnect	.187 x .032/ 4.8 x 0.8	Snap-in	.059/1.5
6ESRFC3	15*	10	Female	Quick Disconnect	.25 x .032/ 6.3 x 0.8	Snap-in	.059/1.5
6ESRF-3	15*	10	Female	Quick Disconnect	.25 x .032/ 6.3 x 0.8	Flange	–

\* UL recognized and CSA certified for 15 amps at 125V. VDE approved for 10 amps at 250V.

▲ Panel thickness tolerance is ±.004 [*±.10*]



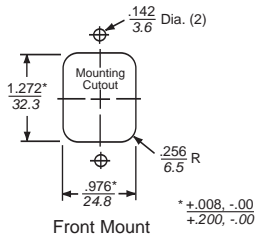
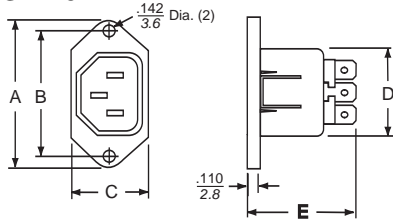
AC Connectors (Continued)

# SR Series

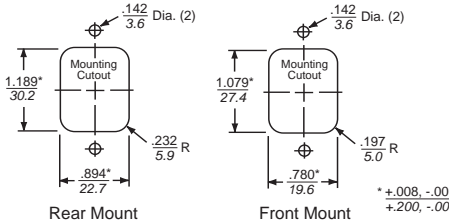
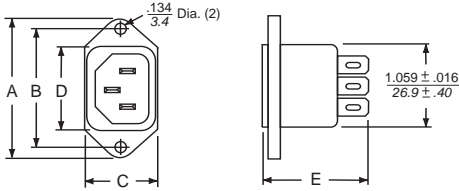
## Case Styles

### Flange Mount

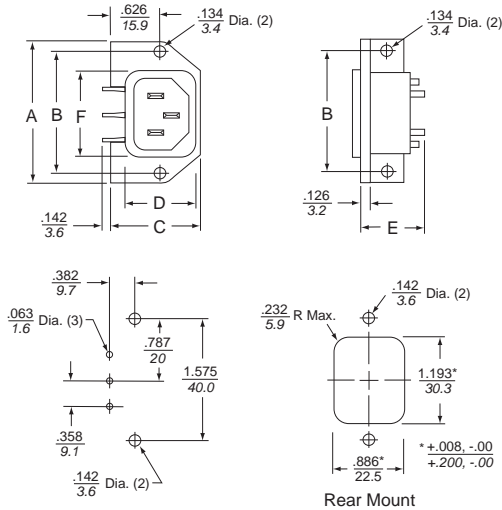
#### 6ESRF-3



#### 6ESRM-3

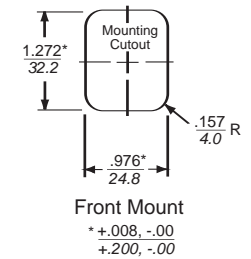
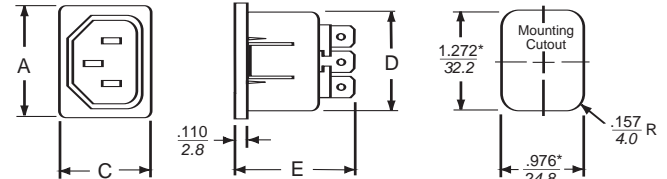


#### 6ESRM-P

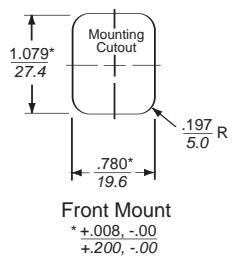
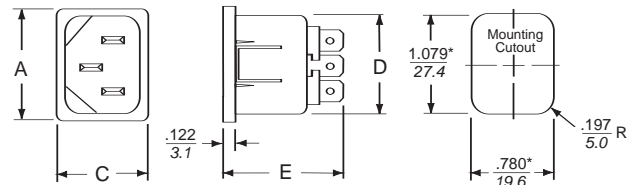


### Snap-in

#### 6ESRFC3



#### 6ESRMC2



### Case Dimensions

Part No.	A (max)	B <sup>+0.017</sup> -.006 <sub>+0.43 - .15</sub>	C (max)	D (max)	E (max)	F (max)
6ESRF-3	<b>1.969</b> 50.0	<b>1.575</b> 40.0	<b>1.154</b> 29.3	<b>1.258</b> 31.95	<b>1.406</b> 35.6	—
6ESRM-3	<b>1.977</b> 50.2	<b>1.575</b> 40.0	<b>0.896</b> 22.8	<b>1.187</b> 30.1	<b>1.224</b> 31.09	—
6ESRM-P	<b>1.969</b> 50.0	<b>1.575</b> 40.0	<b>1.11</b> 28.2	<b>0.88</b> 22.4	<b>1.051</b> 26.7	<b>1.192</b> 30.28
6ESRFC3	<b>1.39</b> 35.3	—	<b>1.11</b> 28.2	<b>1.258</b> 31.95	<b>1.406</b> 35.7	—
6ESRMC2	<b>1.197</b> 30.4	—	<b>0.892</b> 22.7	<b>1.078</b> 27.4	<b>1.205</b> 30.6	—