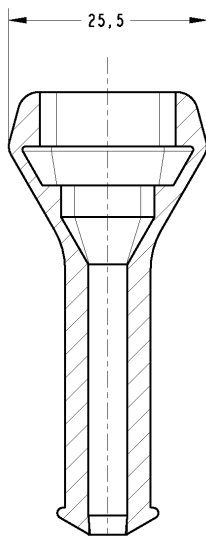
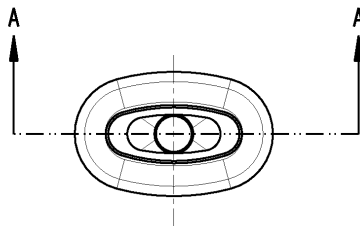


THIS DRAWING IS UNPUBLISHED. RELEASED FOR PUBLICATION
 © COPYRIGHT 19 BY TYCO ELECTRONICS CORPORATION. ALL RIGHTS RESERVED.

LOC	DIST	REVISIONS			
P	LTR	DESCRIPTION	DATE	DWN	APVD
AP	-				
	C	REVISED BY ECO-07-018018	04SEP2007	RKTL	LWP



SECTION A-A
 Ø 4,6
 Ø 5,0

- ① - ELASTÔMERO SAE J200, 2BC 414, A14, B14, C12, E014, F17, Z1
 Z1=RESISTÊNCIA RASGO, ASTM D624 - 20kg/cm MIN.
- ② - ELASTÔMERO SAE J200, 2BC 514, A14, B14, C12, E014, F17, Z1
 Z1=RESISTÊNCIA RASGO, ASTM D624 - 20kg/cm MIN.
- ③ - ELASTOMERO SAE J 200M, 2GE, 405, A19, B37, EA14, EO16, EO36,
 F19, G11, Z1 Z1 = EXTERNAMENTE LUBRIFICADO 2%

- ① - ELASTOMER SAE J200, 2BC 414, A14, B14, C12, E014, F17, Z1
 Z1= TEAR RESISTANCE, ASTM D624 -20kg/cm MIN.
- ② - ELASTOMER SAE J200, 2BC 514, A14, B14, C12, E014, F17, Z1
 Z1= TEAR RESISTANCE, ASTM D624 -20kg/cm MIN.
- ③ - ELASTOMER SAE J 200M, 2GE, 405, A19, B37, EA14, EO16, EO36,
 F19, G11, Z1 Z1 = 2% LUBRIFICATED EXTERNALLY

③	PRETO/BLACK	40±5 SHORE A	SILICON ③	880811-3
	PRETO/BLACK	40±5 SHORE A	ELASTOMER ①	880811-2
②	PRETO/BLACK	50±5 SHORE A	ELASTOMER ②	880811-1
	FINISH	HARDNESS	MATERIAL	PART NUMBER

DIMENSIONS:		TOLERANCES UNLESS OTHERWISE SPECIFIED:		DWN	10JUN99	TYCO ELECTRONICS Brasil LTDA.	
mm		0 PLC ±0,3		CHK	M. L. OGAWA	São Paulo, Brasil	
		1 PLC ±		APVD	P. L. FARIA	COVER CAP 3 POSN	
		2 PLC ±		APVD	J. M. W. NETO	-	
		3 PLC ±		PRODUCT SPEC			
		4 PLC ±		APPLICATION SPEC			
		ANGLES		SIZE CAGE CODE DRAWING NO RESTRICTED TO			
MATERIAL SEE TABLE		FINISH SEE TABLE		WEIGHT -		A3 00779 C-880811 -	
				CUSTOMER DRAWING		SCALE 2:1 SHEET OF REV C	

CAD FILE
 DO NOT REVISE EXCEPT BY CAD