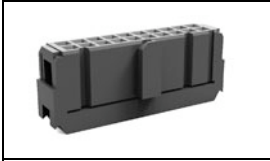


1658621-5 Product Details



1658621-5

TE Internal Number: 1658621-5



[Active](#)



[View 3D PDF](#)

Ribbon Cable Connectors (AMP-LATCH)

 [Always EU RoHS/ELV Compliant \(Statement of Compliance\)](#)

Product Highlights:

- AMP-LATCH Product Line
- Wire-to-Board
- Applies To Wire/Cable
- Connector Assembly
- Connector Style = Receptacle

[View all Features](#)

Documentation & Additional Information

Product Drawings:

- [RECEPTACLE ASSY, CENTER & MILITARY POLARIZATION, LEA...](#) (PDF, English)

Catalog Pages/Data Sheets:

- [Ribbon Cable Interconnect Solutions](#) (PDF, English)

Product Specifications:

- [Connector, Flat Cable Round Conductor, AMP-LATCH* No...](#) (PDF, English)

Application Specifications:

- [AMP-LATCH Novo Receptacles for Ribbon Cable with Con...](#) (PDF, English)

Instruction Sheets:

- [Connector-Specific Kit f/AMP-LATCH Standard and Novo...](#) (PDF, English)

CAD Files: ([CAD Format & Compression Information](#))

- [2D Drawing](#) (DXF, Version D)
- [3D Model](#) (IGES, Version D)
- [3D Model](#) (STEP, Version D)

[List all Documents](#)

Additional Information:

- [Product Line Information](#)

Related Products:

- [Tooling](#)
- [Mating Products \(43\)](#)

Product Features (Please use the Product Drawing for all design activity)

Product Type Features:

- Product Line = AMP-LATCH
- Connector Type = Connector Assembly
- Strain Relief = Without
- Shrouded = No
- Termination Method to Wire/Cable = IDC
- UL File Number = E28476
- CSA File Number = LR 7189

Electrical Characteristics:

- Contact Current Rating (A) = 1
- Operating Voltage Reference = AC
- Operating Voltage (VAC) = 250

Termination Related Features:

- Wire/Cable Size (AWG) = 26 - 28
- Wire/Cable Size (mm²) = 0.08 - 0.15
- Wire/Cable Size (CMA) = 158 - 296

Body Related Features:

- [Number of Positions](#) = 24
- Centerline (mm [in]) = 2.54 [0.100]
- Row-to-Row Spacing (mm [in]) = 2.54 [0.100]
- Number of Rows = 2
- Series = NOVO

Housing Related Features:

- Connector Style = Receptacle
- Mating Alignment = With
- Mating Alignment Type = Polarization
- Housing Color = Black
- UL Flammability Rating = UL 94V-0

Industry Standards:

- [RoHS/ELV Compliance](#) = RoHS compliant, ELV compliant
- [Lead Free Solder Processes](#) = Not relevant for lead free process
- RoHS/ELV Compliance History = Always was RoHS compliant
- Agency/Standard = UL, CSA
- UL Rating = Recognized
- UL Voltage Rating (VAC) = 250

Conditions for Usage:

- [Applies To](#) = Wire/Cable
- Accepts Wire Insulation Diameter, Range (mm [in]) = 0.787 - 0.94 [0.031 - 0.037]
- Operating Temperature (°C [°F]) = -65 - +105 [-85 - +221]

Operation/Application:

- Application Use = Wire-to-Board
- Contact Transmits (Typical Application) = Signal (Data)

- Length (X-Axis) (mm [in]) = 35.05 [1.3799]
- Width (Z-Axis) (mm [in]) = 7.49 [0.2949]
- Profile Height (Y-Axis) (mm [in]) = 15.16 [0.5968]

Contact Related Features:

- Contact Design = Tuning Fork
- Contact Type = Socket
- Contact Base Material = Phosphor Bronze
- [Contact Plating, Mating Area, Material](#) = Gold or Palladium Nickel or Performance Based
- Contact Plating, Mating Area, Thickness (μm [μin]) = 0.381 [15]

Packaging Related Features:

- Packaging Method = Box

Other:

- Brand = AMP