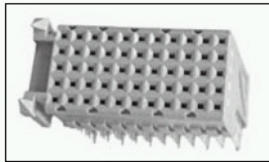
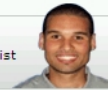


5100161-1 Product Details

Have a Question?

Chat with a Product Information Specialist



5100161-1

TE Internal Number: 5100161-1

Active

View 3D PDF

2mm Hard Metric PCB Mount Connectors (Z-PACK 2mm HM)

Always EU RoHS/ELV Compliant ([Statement of Compliance](#))

Product Highlights:

- Connector
- Housing Gender = Plug
- Contact Gender = Receptacle
- Type = Type C
- Interface Type = 2mm HM

[View all Features](#)

Quick Links

- ▶ [Check Pricing & Availability](#)
- ▶ [Search for Tooling](#)
- ▶ [View Mating Products \(3\)](#)
- ▶ [Product Feature Selector](#)
- ▶ [Contact Us About This Product](#)

Add to My Part List Request Sample Find Similar Products Buy Product

Documentation & Additional Information

Product Drawings:

- [Z-PACK 2mm HM TYPE C 55 POS. FEMALE CONNECTOR](#) (PDF, English)

Catalog Pages/Data Sheets:

- None Available

Product Specifications:

- [Z-Pack 2 mm HM CONNECTORS](#) (PDF, English)

Application Specifications:

- [Z-PACK 2mm HM Interconnection System for Board-to-Bo...](#) (PDF, English)

Instruction Sheets:

- None Available

CAD Files: ([CAD Format & Compression Information](#))

- [2D Drawing](#) (DXF, Version B)
- [3D Model](#) (IGES, Version B)
- [3D Model](#) (STEP, Version B)

[List all Documents](#)

Additional Information:

- [Product Line Information](#)

Related Products:

- [Tooling](#)
- [Mating Products \(3\)](#)

Product Features (Please use the Product Drawing for all design activity)

Product Type Features:

- Product Type = Connector
- [PCB Mount Angle](#) = Right Angle
- [Mating Polarization](#) = With
- [Mating Polarization Type](#) = Guide Lugs

Mechanical Attachment:

- [Board Mount](#) = Free Board
- [Module Length \(mm \[in\]\)](#) = 25.00 [0.984]
- [Crosstalk Version](#) = Standard
- AMP Standard Option Number = 1

Electrical Characteristics:

- [Shielded](#) = No

Termination Related Features:

- [Interface Type](#) = 2mm HM
- Termination End Plating = Tin over Nickel

Body Related Features:

- [Type](#) = Type C
- [Number of Rows](#) = 5
- [Number of Positions](#) = 55
- [Grounding Contact](#) = Without
- Rows Loaded = A, B, C, D, E

Contact Related Features:

- Contact Gender = Receptacle
- Contact Type = ACTION PIN Post, Signal
- [Feedthrough Post Length \(mm \[in\]\)](#) = 3.71 [0.146]
- [CompactPCI](#) = No
- [Contact Plating, Mating Area, Material](#) = Gold (30)
- Contact Style = Short Tail
- Contact Base Material = Phosphor Bronze

Housing Related Features:

- Housing Gender = Plug
- Housing Material = PBT - GF
- Housing Color = Gray
- UL Flammability Rating = UL 94V-0

Industry Standards:

- [RoHS/ELV Compliance](#) = RoHS compliant, ELV compliant
- [Lead Free Solder Processes](#) = Not relevant for lead free process
- RoHS/ELV Compliance History = Always was RoHS compliant

Packaging Related Features:

- Packaging Quantity = 22

Other:

- Brand = AMP

BOOKMARK

Corporate Information

[Who We Are](#)
[Investors](#)
[News Room](#)
[Supplier Portal](#)
[Careers](#)

Quick Links

[Check Distributor Inventory](#)
[Cross Reference](#)
[Find Documents & Drawings](#)
[Product Compliance Support Center](#)
[Site Map](#)

Customer Support

[Email or Chat with Us](#)
[Find a Phone Number](#)
[Search Knowledge Base](#)
[Manage Your Account](#)

Sign up for our eNewsletter

Enter your email address

Follow us on: