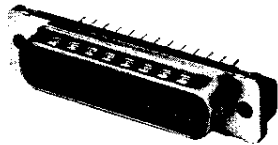


HD-20 Front Metal-Shell Straight Posted Connectors

Plug



With Grounding Indents



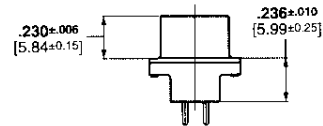
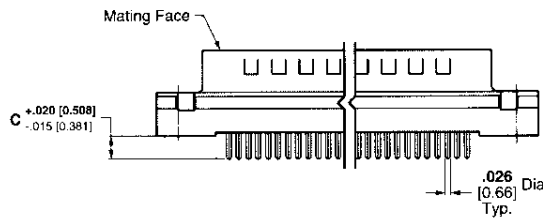
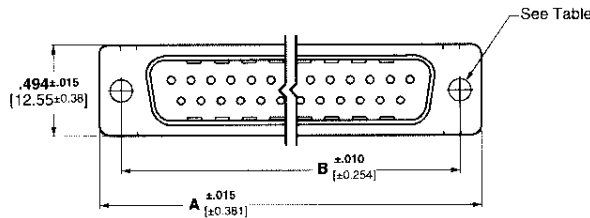
With Threaded Insert



With Fixed Female Screwlock



With Retention



See customer drawings for pcb layouts.

Material and Finish:

- Shell**—Steel, tin plated
- Housing**—94V-0 rated thermoplastic, black
- Threaded Inserts**—Brass, unplated
- Female Screwlocks**—Zinc
- Pin Contacts (Posted)**—Brass, plated as follows:
A—.000030 [0.00076] gold on mating end, tin-lead on termination end, with entire contact .000050 [0.00127] (min.) nickel underplated
B—Gold flash on mating end, tin-lead on termination end, with entire contact .000050 [0.00127] (min.) nickel underplated

Technical Documents:

- Product Specification**—108-40025
- Application Specification**—114-40023

| Shell Size | No. of Contact Positions | Dimensions | | | Contact Finish (Plating Code) | Plug Part Numbers | | | | |
|------------|--------------------------|----------------|----------------|--------------|-------------------------------|------------------------------|----------------------------|---|------------------------------|--|
| | | A | B | C* | | With Standard Mounting Holes | With 4-40 Threaded Inserts | With Retention 4-40 Inserts (for .062 [1.58] PCB) | With Fixed Female Screwlocks | With Retention 4-40 Screwlocks (for .062 [1.58] PCB) |
| 1 | 9 | 1.213 30.81 | .984 24.99 | .125 3.18 | A | 747871-2 | 747871-8 | 2-748003-0 | 1-747871-4 | — |
| | | | | .170 4.32 | A | 747871-4 | — | — | 1-747871-6 | — |
| | | | | .125 3.18 | A | — | 747872-8 | — | — | 748026-1 |
| 2 | 15 | 1.541 39.14 | 1.312 33.33 | .170 4.32 | A | 747872-4 | — | — | 1-747872-6 | — |
| | | | | .125 3.18 | A | 745968-2 | 745968-8 | 2-747704-0 | 1-745968-4 | 748027-1 |
| 3 | 25 | 2.090 53.09 | 1.852 47.04 | .170 4.32 | A | 745968-4 | — | — | 1-745968-3 | — |
| | | | | .125 3.18 | A | — | — | — | 1-745968-6 | — |
| | | | | .125 3.18 | A | 747375-2 | 747375-8 | — | — | 787686-1 |

*.125 [3.18] post length is recommended for pc board thickness of .062-.093 [1.58-2.36] max.; .170 [4.32] post length is recommended for pc board thickness of .093-.125 [2.36-3.18]; .250 [6.35] post length is for special applications

- Notes:**
- All plugs are preloaded with size 20 DF posted pin contacts.
 - Male screw retainers are used as mating hardware for connectors with 4-40 female screwlocks.
 - PC board hole size is .121±.002 [3.07±0.0508] for all retention inserts and screwlocks.

Straight Posted Connectors