

Amphenol®

**TERRAPIN**

Miniature Rugged Connector Series



# TERRAPIN

## Miniature Rugged Connector Series

Intended for harsh environment applications and used extensively in soldier communications, Amphenol Terrapin is a miniature series of circular push-pull connectors. Within a rugged shell design Terrapin offers superior EMC performance and high environmental sealing to IP68. Resilient in severe battlefield situations the RoHS compliant black-silver plating is both low-lustre and corrosion resistant. Featuring an optional locking mechanism, multiple shell sizes with up to 37 contacts and suitability for overmoulding, Terrapin is the preferred choice for miniature connectors in military and other harsh environment applications.

Terrapin shells are machined from brass giving an increased number of mating cycles and higher degree of robustness over traditional aluminium connectors. Five different keying options are available to prevent mis-mating: N, A, B, C and D. Standard plating is non-reflective black-silver, alternative plating finishes are available upon request.

Terrapin is available in two different styles of mating; either Snatch, being a break-away connector with no moving parts, or Latch, which has an additional coupling ring allowing connections to be locked together. The same plug can be mated to either snatch or latch receptacles. Both styles of product are waterproof to IP68 in both their mated and unmated conditions.

Amphenol offer a full range of cable harness solutions with standard or customised overmoulding. Alternatively, for field termination, both integral and threaded backshell

connectors can be terminated with screen retention straps and heatshrink boots giving full 360° screening.

The customised design specification of Terrapin lends itself to a variety of applications. Originally designed for soldier mounted applications such as Radios, Headsets and GPS units, Terrapin is also suitable for Gigabit Ethernet and USB 2.0 and therefore widely used on Computer Systems, LAN Switches and Routers. The high degree of sealing offered by Terrapin makes it perfect for Unmanned Ground Sensors and Surveillance equipment. Whatever the application, Terrapin offers space savings and improved durability over traditional interconnect products.

## Contents

|   |   |
|---|---|
| <b>Terrapin terminology</b> .....             | 4 |
| <b>Terrapin mating options</b> .....          | 4 |
| <b>Terrapin PART NUMBERING</b> .....          | 5 |
| <b>Terrapin performance information</b> ..... | 6 |
| <b>Terrapin insert availability</b> .....     | 7 |

|   |    |
|---|----|
| <b>Plugs</b>  |    |
| Table of styles .....   | 8  |
| <b>76A</b> Rear Mount Jam Nut Plug .....                      | 9  |
| <b>67A</b> Front Mount Jam Nut Plug .....                     | 10 |
| <b>06K</b> Inline Plug Integral Backshell .....               | 11 |
| <b>06T</b> Inline Plug Threaded Backshell .....               | 12 |
| <b>76T</b> Rear Mount Jam Nut Plug (Screw On Backshell) ..... | 13 |

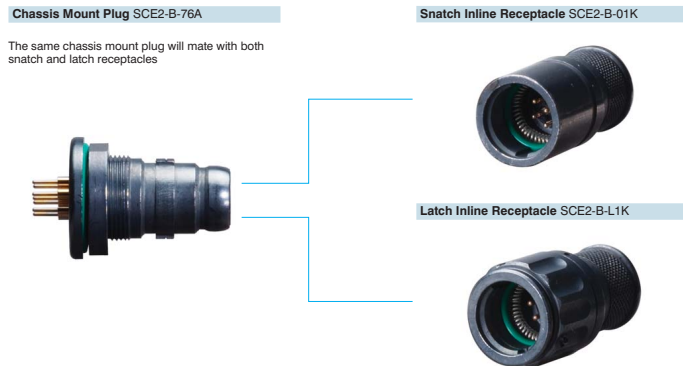
|   |    |
|---|----|
| <b>Receptacles</b>  |    |
| Table of styles .....   | 14 |
| <b>01K</b> Inline Receptacle, Integral Backshell .....          | 15 |
| <b>L1K</b> Inline Latching Receptacle, Integral Backshell ..... | 16 |
| <b>01T</b> Inline Receptacle, Threaded Backshell .....          | 17 |
| <b>L1T</b> Inline Latching Receptacle, Threaded Backshell ..... | 18 |
| <b>07A</b> Rear Mount Jam Nut Receptacle .....                  | 19 |
| <b>71A</b> Front Mount Receptacle, Threaded .....               | 20 |

|  |    |
|--|----|
| <b>Accessories</b>   |    |
| Cap assembly part numbering .....                              | 21 |
| <b>390-5057</b> Metal Dust Cap Assembly for Plugs .....        | 22 |
| <b>390-5056</b> Metal Dust Cap Assembly for Receptacles .....  | 23 |
| <b>390-5064</b> Rubber Dust Cap Assembly for Plugs .....       | 24 |
| <b>390-5063</b> Rubber Dust Cap Assembly for Receptacles ..... | 25 |
| Overmoulded cable harnesses .....                              | 26 |

### Terrapin terminology



### Terrapin mating options



### Terrapin part numbering

Example: **SCE2-B-76A06-07SN-002** | (985) for optional grounding spring in L1K and L1T | (981) castellated panel nut

| SCE2-                    | B-  | XXX   | XX-  | XX  | -X   | X-  | XXX |
|--------------------------|---|---|--|---|--|---|-----|
| <b>Series identifier</b> | <b>Plating finish</b><br>B = Black<br>Silver (RoHS) | <b>Style</b><br>Plugs<br>76A<br>67A<br>06K<br>06T<br>76T<br>Receptacles<br>01K<br>L1K<br>01T<br>L1T<br>07A<br>71A | <b>Shell size and number of contacts</b><br>06-07<br>07-10A<br>07-12<br>07-14<br>08-19<br>09-26<br>10-37<br>(See page 7) | <b>Contact style</b><br>P = Pins<br>S = Sockets | <b>Key orientation</b><br>N = Normal<br>A<br>B<br>C<br>D<br>(See diagrams below) | <b>Variant code</b><br>001<br>PC Tails<br>002<br>Solder Buckets<br>003<br>Backshell |     |

### Terrapin plug and receptacle keyway orientation

| Keyway orientation letter | PLUG keyway orientation | RECEPTACLE keyway orientation |
|---------------------------|-------------------------|-------------------------------|
| <b>N</b>                  |                         |                               |
| <b>A</b>                  |                         |                               |
| <b>B</b>                  |                         |                               |
| <b>C</b>                  |                         |                               |
| <b>D</b>                  |                         |                               |

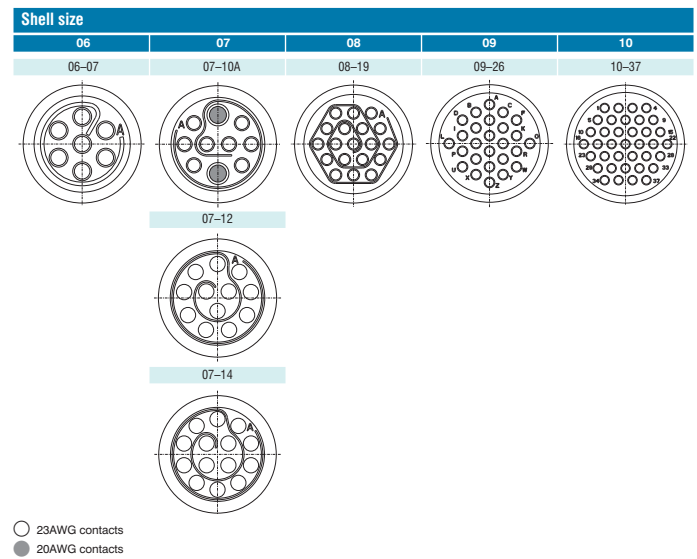
Terrapin performance information

| Test/parameter                        | Description  |
|---------------------------------------|--|
| <b>Electrical</b>                     |  |
| Current Rating                        | 23 AWG contacts: 3A d.c.<br>20 AWG contacts: 7.5A d.c. |
| Shell to Shell Continuity             | 10mΩ max (screened)<br>200mΩ max (unscreened)          |
| Contact Resistance                    | Size 20 and 23 contacts: 5mΩ initial<br>10mΩ maximum   |
| Insulation Resistance                 | 5000MΩ minimum   |
| Working Voltage                       | AC (RMS) 400V  |
| Dielectric Withstanding Voltage       | 2mA maximum leakage                                    |
| <b>Technical</b>                      |  |
| Mating Durability                     | 2000+ cycles   |
| Backshell Overtorque                  | 25 lb.f.in.  |
| Panel Nut Overtorque                  | 30 lb.f.in.  |
| Non-magnetic                          | Yes  |
| <b>Environmental</b>                  |  |
| Operating Temperature Range           | -55°C to +125°C  |
| Temperature Endurance                 | 250 hours +125°C                                       |
| Sealing (mated and unmated)           | IP68, 1 hour at 2 metres*                              |
| Air Leakage                           | Less than 1cc per hour                                 |
| Salt Spray                            | 1000 hours   |
| Altitude Immersion                    | 70,000 Feet  |
| RoHS Compliant                        | Yes  |
| Suitable for RoHS compliant Soldering | Yes  |

\*Contact the factory if greater depth/duration of sealing is required

Terrapin insert availability

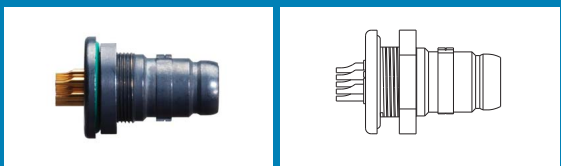
View shown for reference / View from rear of plug\*



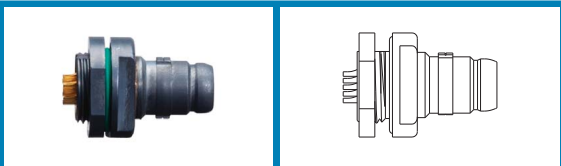
\*View from rear of receptacle is mirror image of above.

Plugs – table of styles

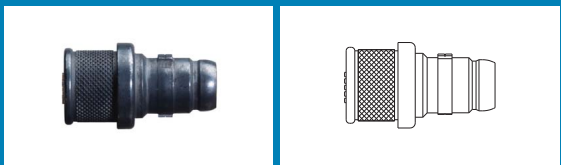
**SCE2-X-76A**  
Page 9



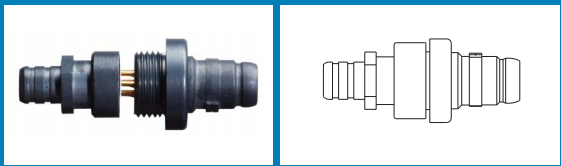
**SCE2-X-67A**  
Page 10



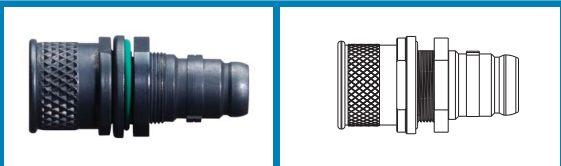
**SCE2-X-06K**  
Page 11



**SCE2-X-06T**  
Page 12

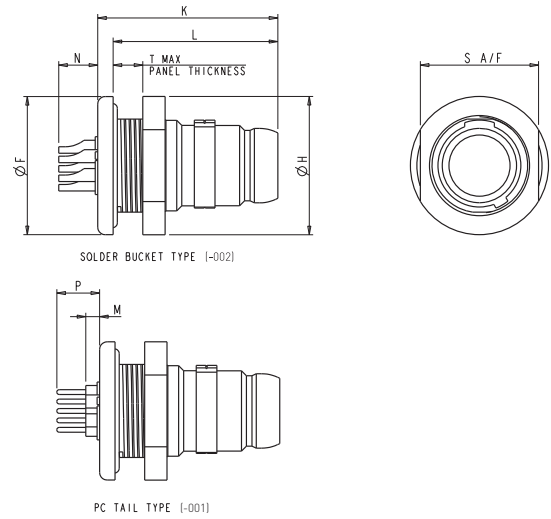


**SCE2-X-76T**  
Page 13



Plug

**SCE2-X-76AXX-XXSX-XXX**  
Rear Mount Jam Nut Plug



| Shell Size | ØF           | ØH           | K            | L            | M           | N           | P            | S A/F        | T Max       |
|------------|--------------|--------------|--------------|--------------|-------------|-------------|--------------|--------------|-------------|
| Size 06    | .550 (13.97) | .550 (13.97) | .716 (18.19) | .655 (16.64) | .055 (1.40) | .155 (3.94) | -.170 (4.32) | .470 (11.94) | .118 (3.00) |
| Size 07    | .620 (15.75) | .600 (15.24) | .716 (18.19) | .655 (16.64) | .055 (1.40) | .155 (3.94) | -.170 (4.32) | .510 (12.95) | .118 (3.00) |
| Size 08    | .760 (19.30) | .760 (19.30) | .716 (18.19) | .655 (16.64) | .055 (1.40) | .155 (3.94) | -.170 (4.32) | .706 (17.93) | .118 (3.00) |
| Size 09    | .890 (22.61) | .830 (21.08) | .802 (20.37) | .725 (18.42) | N/A         | .085 (2.16) | -.100 (2.54) | .745 (18.92) | .118 (3.00) |
| Size 10    | .930 (20.62) | .900 (22.86) | .802 (20.37) | .725 (18.42) | N/A         | .085 (2.16) | -.100 (2.54) | .808 (20.52) | .125 (3.18) |

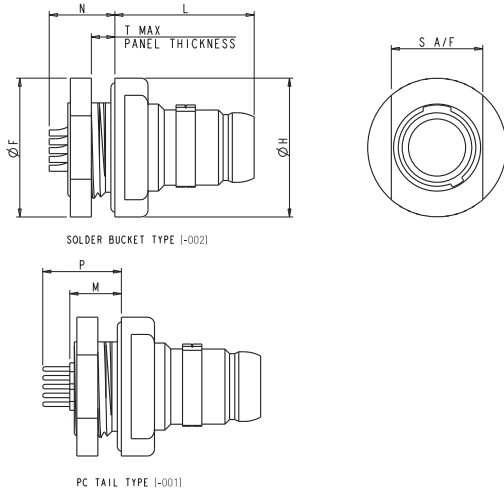
All dimensions are in inches (mm shown in brackets) and are for reference only. Figure enlarged scale.

# Amphenol®

## Plug

### SCE2-X-67AXX-XXSX-XXX

Front Mount Jam Nut Plug



| Shell Size | ØF           | ØH           | L            | M           | N           | P            | S A/F        | T Max       |
|------------|--------------|--------------|--------------|-------------|-------------|--------------|--------------|-------------|
| Size 06    | .590 (14.99) | .590 (14.99) | .592 (13.04) | .324 (8.23) | .279 (7.09) | .424 (10.78) | .525 (13.34) | .100 (2.54) |
| Size 07    | .620 (15.75) | .620 (15.75) | .592 (13.04) | .324 (8.23) | .279 (7.09) | .424 (10.78) | .685 (17.40) | .100 (2.54) |
| Size 08    | .760 (19.30) | .760 (19.30) | .592 (13.04) | .324 (8.23) | .279 (7.09) | .424 (10.78) | .825 (20.96) | .100 (2.54) |
| Size 09    | .890 (22.61) | .890 (22.61) | .662 (16.82) | .254 (6.45) | .209 (5.31) | .354 (8.99)  | .955 (24.26) | .100 (2.54) |
| Size 10    | .930 (23.62) | .930 (23.62) | .662 (16.82) | .254 (6.45) | .209 (5.31) | .354 (8.99)  | .995 (25.27) | .100 (2.54) |

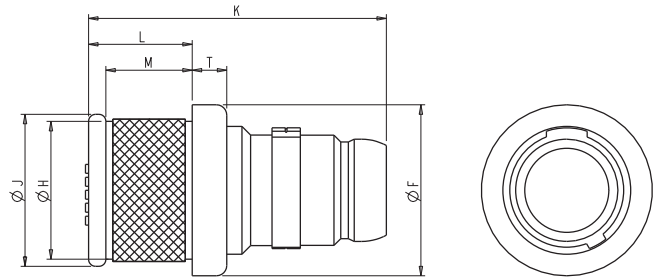
All dimensions are in inches (mm shown in brackets) and are for reference only. Figure enlarged scale.

# Amphenol®

## Plug

### SCE2-X-06KXX-XXSX

Inline Plug Integral Backshell



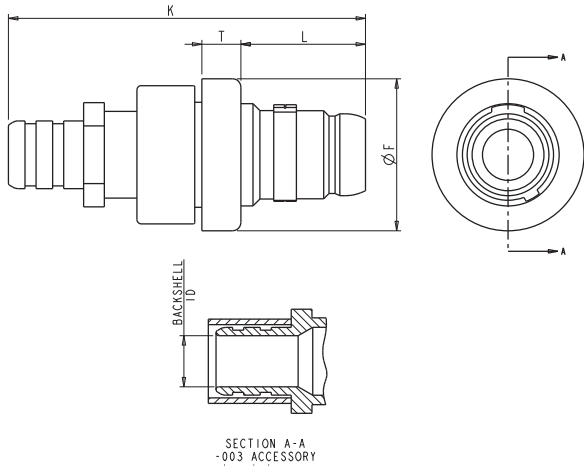
| Shell Size | ØF           | ØH           | ØJ           | K            | L           | M           | T           |
|------------|--------------|--------------|--------------|--------------|-------------|-------------|-------------|
| Size 06    | .495 (12.57) | .412 (10.46) | .440 (11.18) | .862 (21.89) | .300 (7.62) | .250 (6.35) | .100 (2.54) |
| Size 07    | .575 (14.61) | .460 (11.68) | .505 (12.83) | .862 (21.89) | .300 (7.62) | .250 (6.35) | .100 (2.54) |
| Size 08    | .650 (16.51) | .593 (15.06) | .620 (15.75) | .862 (21.89) | .300 (7.62) | .250 (6.35) | .100 (2.54) |
| Size 09    | .725 (18.42) | .651 (16.54) | .690 (17.53) | .932 (23.67) | .300 (7.62) | .250 (6.35) | .100 (2.54) |
| Size 10    | .800 (20.32) | .721 (18.31) | .760 (19.30) | .932 (23.67) | .300 (7.62) | .250 (6.35) | .100 (2.54) |

All dimensions are in inches (mm shown in brackets) and are for reference only. Figure enlarged scale.

Plug

SCE2-X-06TXX-XXSX-003

- Inline Plug Threaded Backshell



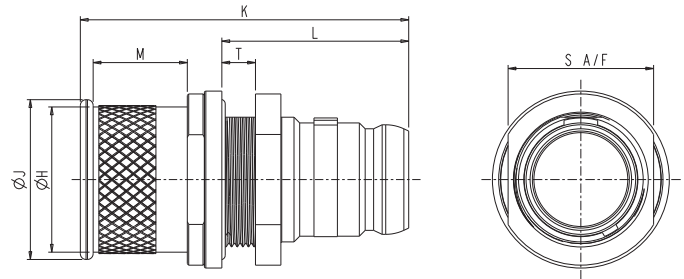
| Shell Size | ØF           | K             | L            | T           | Backshell ID |
|------------|--------------|---------------|--------------|-------------|--------------|
| Size 06    | .550 (13.97) | 1.292 (32.82) | .451 (11.46) | .141 (3.58) | .185 (4.70)  |
| Size 07    | .630 (16.00) | 1.292 (32.82) | .451 (11.46) | .141 (3.58) | .265 (6.73)  |
| Size 08    | .705 (17.91) | 1.292 (32.82) | .451 (11.46) | .141 (3.58) | .345 (8.76)  |
| Size 09    | .780 (19.81) | 1.362 (34.60) | .521 (13.23) | .141 (3.58) | .425 (10.80) |
| Size 10    | .855 (21.72) | 1.362 (34.60) | .521 (13.23) | .141 (3.58) | .505 (12.83) |

All dimensions are in inches (mm shown in brackets) and are for reference only. Figure enlarged scale.

Plug

SCE2-X-76TXX-XXSX-XXX

- Rear Mount Jam Nut Plug (Screw On Backshell)

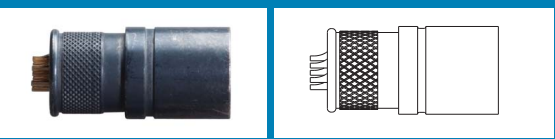


| Shell Size | ØH           | ØJ           | K             | L            | M           | S A/F        | T Max       |
|------------|--------------|--------------|---------------|--------------|-------------|--------------|-------------|
| Size 06    | .460 (11.68) | .490 (12.45) | 1.150 (29.21) | .655 (16.64) | .330 (8.38) | .470 (11.94) | .125 (3.18) |
| Size 07    | .600 (15.24) | .645 (16.83) | 1.150 (29.21) | .655 (16.64) | .330 (8.38) | .510 (12.95) | .125 (3.18) |
| Size 08    | .730 (18.54) | .770 (19.56) | 1.150 (29.21) | .655 (16.64) | .330 (8.38) | .706 (17.93) | .125 (3.18) |
| Size 09    | .790 (20.07) | .830 (21.08) | 1.220 (30.99) | .725 (18.42) | .330 (8.38) | .745 (18.92) | .125 (3.18) |
| Size 10    | .860 (21.84) | .900 (22.86) | 1.220 (30.99) | .725 (18.42) | .330 (8.38) | .808 (20.52) | .125 (3.18) |

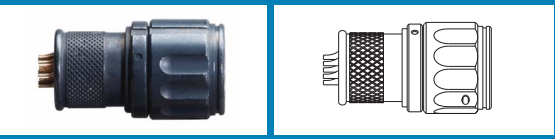
All dimensions are in inches (mm shown in brackets) and are for reference only. Figure enlarged scale.

Receptacles – table of styles

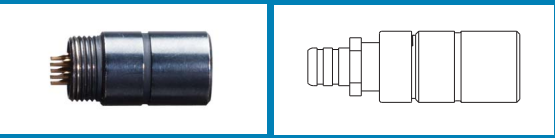
SCE2-X-01K  
Page 15



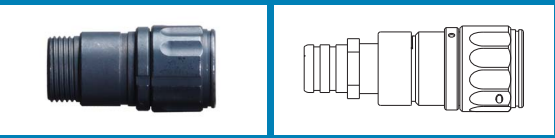
SCE2-X-L1K  
Page 16



SCE2-X-01T  
Page 17



SCE2-X-L1T  
Page 18



SCE2-X-07A  
Page 19



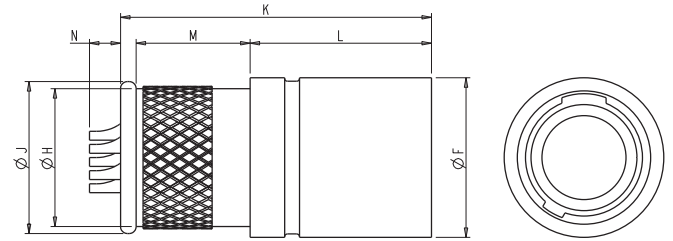
SCE2-X-71A  
Page 20



Receptacle

SCE2-X-01KXX-XXPX

■ Inline Receptacle, Integral Backshell



| Shell Size | ØF           | ØH           | ØJ           | K            | L            | M            | N           |
|------------|--------------|--------------|--------------|--------------|--------------|--------------|-------------|
| Size 06    | .462 (11.73) | .399 (10.13) | .440 (11.18) | .900 (22.86) | .525 (13.34) | .330 (8.38)  | .090 (2.29) |
| Size 07    | .575 (14.61) | .460 (11.68) | .505 (12.83) | .900 (22.86) | .525 (13.34) | .330 (8.38)  | .090 (2.29) |
| Size 08    | .620 (15.75) | .581 (14.76) | .620 (15.75) | .900 (22.86) | .525 (13.34) | .330 (8.38)  | .090 (2.29) |
| Size 09    | .691 (17.55) | .651 (16.54) | .690 (17.53) | .970 (24.64) | .525 (13.34) | .400 (10.16) | .020 (0.51) |
| Size 10    | .761 (19.33) | .721 (18.31) | .760 (19.30) | .970 (24.64) | .525 (13.34) | .400 (10.16) | .020 (0.51) |

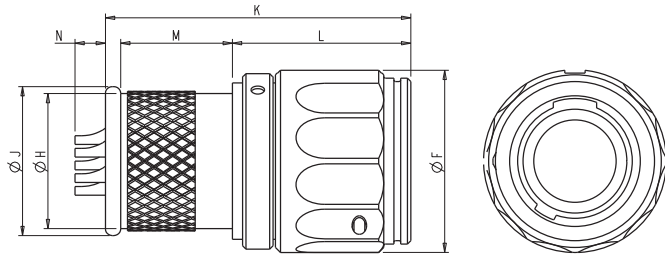
All dimensions are in inches (mm shown in brackets) and are for reference only. Figure enlarged scale.



Receptacle

SCE2-X-L110XX-XXPX

Inline Latching Receptacle, Integral Backshell



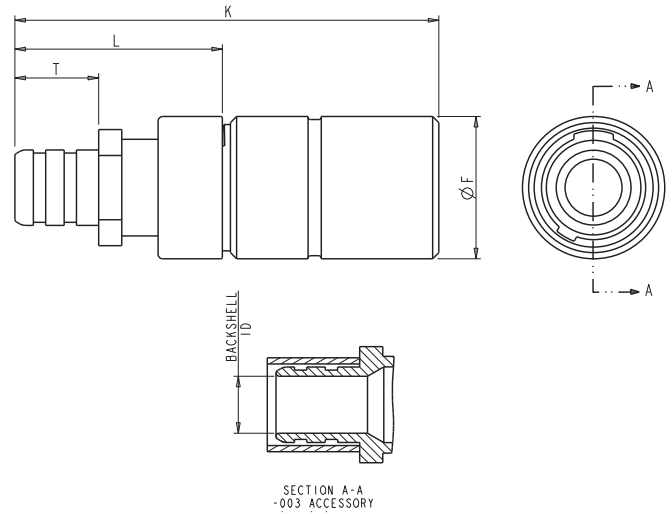
| Shell Size | ØF           | ØH           | ØJ           | K            | L            | M            | N           |
|------------|--------------|--------------|--------------|--------------|--------------|--------------|-------------|
| Size 06    | .540 (13.75) | .399 (10.14) | .440 (11.18) | .902 (22.91) | .527 (13.39) | .330 (8.38)  | .090 (2.29) |
| Size 07    | .610 (15.50) | .447 (11.35) | .505 (12.83) | .902 (22.91) | .527 (13.39) | .330 (8.38)  | .090 (2.29) |
| Size 08    | .699 (17.75) | .581 (14.75) | .620 (15.75) | .902 (22.91) | .527 (13.39) | .330 (8.38)  | .090 (2.29) |
| Size 09    | .770 (19.56) | .651 (16.54) | .690 (17.53) | .972 (24.69) | .527 (13.39) | .400 (10.16) | .090 (2.29) |
| Size 10    | .840 (21.34) | .721 (18.31) | .760 (19.30) | .972 (24.69) | .527 (13.39) | .400 (10.16) | .090 (2.29) |

All dimensions are in inches (mm shown in brackets) and are for reference only. Figure enlarged scale.

Receptacle

SCE2-X-01TXX-XXPX-003

Inline Receptacle, Threaded Backshell



| Shell Size | ØF           | K             | L            | T           | Backshell ID |
|------------|--------------|---------------|--------------|-------------|--------------|
| Size 06    | .462 (11.73) | 1.377 (34.98) | .674 (17.12) | .272 (6.91) | .185 (4.70)  |
| Size 07    | .575 (14.61) | 1.377 (34.98) | .674 (17.12) | .272 (6.91) | .265 (6.73)  |
| Size 08    | .620 (15.75) | 1.377 (34.98) | .674 (17.12) | .272 (6.91) | .345 (8.76)  |
| Size 09    | .690 (17.53) | 1.447 (36.75) | .674 (17.12) | .272 (6.91) | .425 (10.80) |
| Size 10    | .760 (19.30) | 1.447 (36.75) | .674 (17.12) | .272 (6.91) | .505 (12.83) |

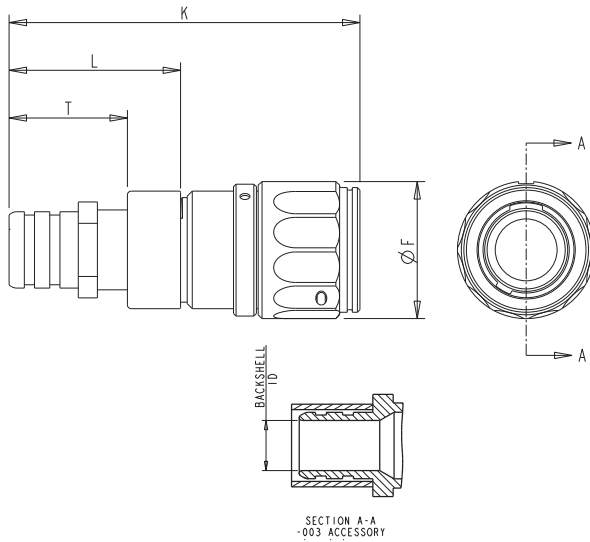
All dimensions are in inches (mm shown in brackets) and are for reference only. Figure enlarged scale.

Receptacle

Receptacle

SCE2-X-**L1TXX**-XXPX-003

■ Inline Latching Receptacle, Threaded Backshell

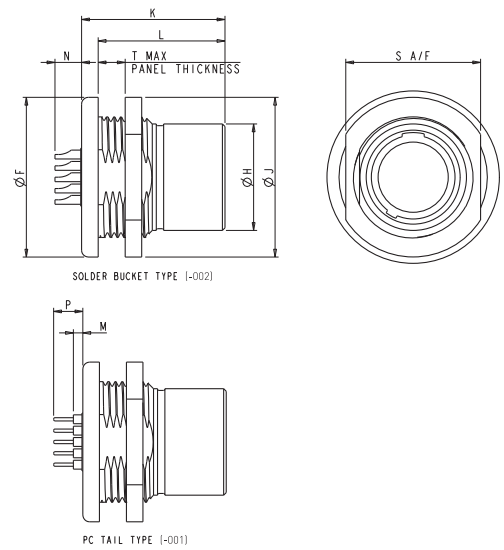
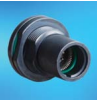


| Shell Size | ØF           | K             | L            | T            | Backshell ID  |
|------------|--------------|---------------|--------------|--------------|---------------|
| Size 06    | .538 (13.67) | 1.379 (35.03) | .674 (17.12) | .465 (11.81) | -.185 (4.70)  |
| Size 07    | .610 (15.50) | 1.379 (35.03) | .674 (17.12) | .465 (11.81) | -.265 (6.73)  |
| Size 08    | .699 (17.75) | 1.379 (35.03) | .674 (17.12) | .465 (11.81) | -.345 (8.76)  |
| Size 09    | .770 (19.56) | 1.449 (36.80) | .674 (17.12) | .465 (11.81) | -.425 (10.80) |
| Size 10    | .840 (21.34) | 1.449 (36.80) | .674 (17.12) | .465 (11.81) | -.505 (12.83) |

All dimensions are in inches (mm shown in brackets) and are for reference only. Figure enlarged scale.

SCE2-X-**07AXX**-XXPX-XXX

■ Rear Mount Jam Nut Receptacle



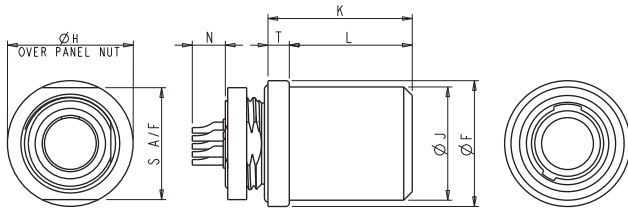
| Shell Size | ØF            | ØH           | ØJ            | K            | L            | M           | N            | P           | S A/F        | T Max        |
|------------|---------------|--------------|---------------|--------------|--------------|-------------|--------------|-------------|--------------|--------------|
| Size 06    | .750 (19.05)  | .462 (11.73) | .750 (19.05)  | .835 (21.21) | .738 (18.75) | .055 (1.40) | -.155 (3.94) | .170 (4.42) | .672 (17.07) | -.157 (4.45) |
| Size 07    | .895 (22.73)  | .575 (14.61) | .895 (22.73)  | .835 (21.21) | .738 (18.75) | .055 (1.40) | -.155 (3.94) | .170 (4.42) | .750 (19.05) | -.157 (4.45) |
| Size 08    | .930 (23.62)  | .620 (15.75) | .930 (23.62)  | .835 (21.21) | .738 (18.75) | .055 (1.40) | -.155 (3.94) | .170 (4.42) | .825 (20.96) | -.157 (4.45) |
| Size 09    | 1.005 (25.53) | .690 (17.53) | 1.005 (25.53) | .905 (22.99) | .808 (20.52) | N/A         | -.080 (2.03) | .170 (4.42) | .900 (22.86) | -.157 (4.45) |
| Size 10    | 1.080 (27.43) | .760 (19.30) | 1.080 (27.43) | .905 (22.99) | .808 (20.52) | N/A         | -.080 (2.03) | .170 (4.42) | .975 (24.77) | -.157 (4.45) |

All dimensions are in inches (mm shown in brackets) and are for reference only. Figure enlarged scale.

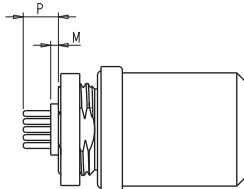
### Receptacle

SCE2-X-71AXX-XXPX-XXX

Front Mount Receptacle, Threaded



SOLDER BUCKET TYPE [-002]



PC TAIL TYPE [-001]

| Shell Size | ØF           | ØJ           | ØH           | K            | L            | M           | N           | P           | S A/F        | T           |
|------------|--------------|--------------|--------------|--------------|--------------|-------------|-------------|-------------|--------------|-------------|
| Size 06    | .590 (14.99) | .462 (11.73) | .590 (14.99) | .877 (22.28) | .677 (17.20) | .015 (0.38) | .113 (2.87) | .130 (3.30) | .525 (13.34) | .100 (2.54) |
| Size 07    | .620 (15.75) | .575 (14.61) | .620 (15.75) | .877 (22.28) | .677 (17.20) | .015 (0.38) | .113 (2.87) | .130 (3.30) | .685 (17.40) | .100 (2.54) |
| Size 08    | .760 (19.30) | .620 (15.75) | .760 (19.30) | .877 (22.28) | .677 (17.20) | .015 (0.38) | .113 (2.87) | .130 (3.30) | .825 (20.96) | .100 (2.54) |
| Size 09    | .890 (22.61) | .690 (17.53) | .890 (22.61) | .947 (24.05) | .747 (18.97) | N/A         | .113 (2.87) | .060 (1.52) | .955 (24.26) | .100 (2.54) |
| Size 10    | .930 (20.62) | .760 (19.30) | .930 (20.62) | .947 (24.05) | .747 (18.97) | N/A         | .113 (2.87) | .060 (1.52) | .995 (25.27) | .100 (2.54) |

All dimensions are in inches (mm shown in brackets) and are for reference only. Figure enlarged scale.

### Accessories

#### Cap assembly part numbering

Example: 390-5056-06-130-02 | See Pages 22-25 for drawings

| 390-                  | XXXX-     | XX-        | XXX-              | XX                       |
|-----------------------|-----------|------------|-------------------|--------------------------|
| Series identifier     | Cap style | Shell size | Cord length in mm | Accessories              |
| 5056                  | 06        | 06         | 060               | 01                       |
| Metal for receptacle  | 07        | 08         | 130               | 02                       |
| 5057                  | 08        | 09         | 180               | 03                       |
| Metal for plug        | 09        | 10         |                   | 04                       |
| 5063                  |           |            |                   | 05                       |
| Rubber for receptacle |           |            |                   | See table on pages 22-25 |
| 5064                  |           |            |                   |                          |
| Rubber for plug       |           |            |                   |                          |

#### Heatshrink Boots

- Part number: 123GB-0798-XX-X-0
- XX = shell size, for example: 06, 07, 08, 09, or 10
- X = S for straight or R for right angled



#### Braid Retention Strap

- Part number: 123GB-0799-0
- Tooling available on request



#### Castellated Panel Nut

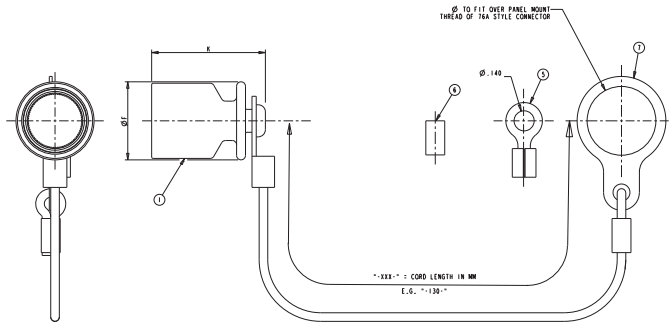
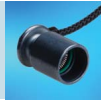
- Add deviation (981)
- Tooling available on request



## Accessories

### 390-5057-XX-XXX-XX

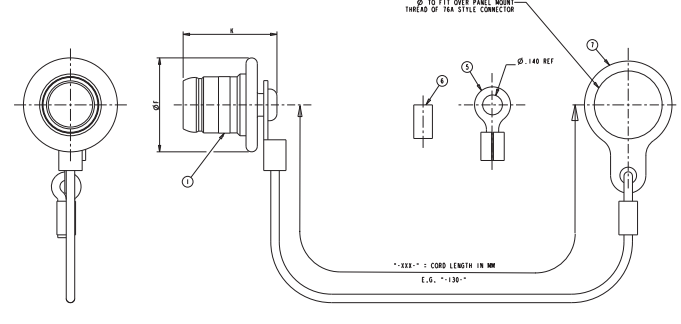
- Metal Dust Cap Assembly for Plugs



## Accessories

### 390-5056-XX-XXX-XX

- Metal Dust Cap Assembly for Receptacles



| Shell size | Part number        | Item 1 Cap   |              |
|------------|--------------------|--------------|--------------|
|            |                    | ØF           | K            |
| 06         | 390-5057-06-XXX-XX | .464 (11.79) | .794 (20.17) |
| 07         | 390-5057-07-XXX-XX | .545 (13.84) | .794 (20.17) |
| 08         | 390-5057-08-XXX-XX | .620 (15.75) | .794 (20.17) |
| 09         | 390-5057-09-XXX-XX | .695 (17.65) | .794 (20.17) |
| 10         | 390-5057-10-XXX-XX | .770 (19.56) | .794 (20.17) |

| Supplied with      |               |                      |                     |
|--------------------|---------------|----------------------|---------------------|
| Part number        | Item 5 Eyelet | Item 6 Crimp ferrule | Item 7 Large eyelet |
| 390-5057-XX-XXX-01 | —             | —                    | —                   |
| 390-5057-XX-XXX-02 | —             | 1                    | —                   |
| 390-5057-XX-XXX-03 | 1             | —                    | —                   |
| 390-5057-XX-XXX-04 | 1             | 1                    | —                   |
| 390-5057-XX-XXX-05 | —             | —                    | 1                   |

All dimensions are in inches (mm shown in brackets) and are for reference only. Figure enlarged scale.

| Shell size | Part number        | Item 1 Cap   |              |
|------------|--------------------|--------------|--------------|
|            |                    | ØF           | K            |
| 06         | 390-5056-06-XXX-XX | .575 (14.61) | .664 (16.87) |
| 07         | 390-5056-07-XXX-XX | .575 (14.61) | .664 (16.87) |
| 08         | 390-5056-08-XXX-XX | .750 (19.05) | .664 (16.87) |
| 09         | 390-5056-09-XXX-XX | .825 (20.95) | .664 (16.87) |
| 10         | 390-5056-10-XXX-XX | .900 (22.86) | .664 (16.87) |

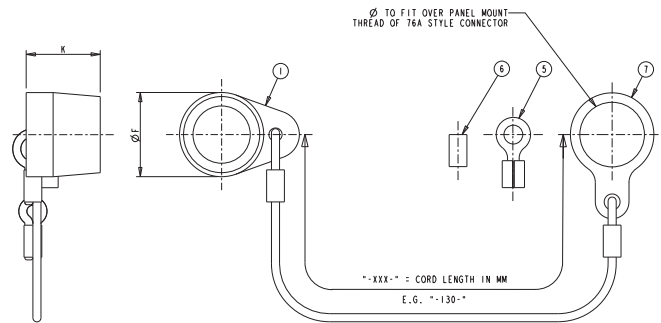
| Supplied with      |               |                      |                     |
|--------------------|---------------|----------------------|---------------------|
| Part number        | Item 5 Eyelet | Item 6 Crimp ferrule | Item 7 Large eyelet |
| 390-5056-XX-XXX-01 | —             | —                    | —                   |
| 390-5056-XX-XXX-02 | —             | 1                    | —                   |
| 390-5056-XX-XXX-03 | 1             | —                    | —                   |
| 390-5056-XX-XXX-04 | 1             | 1                    | —                   |
| 390-5056-XX-XXX-05 | —             | —                    | 1                   |

All dimensions are in inches (mm shown in brackets) and are for reference only. Figure enlarged scale.

## Accessories

### 390-5064-XX-XXX-XX

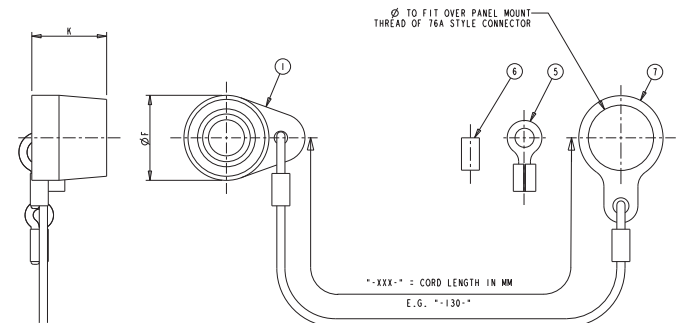
■ Rubber Dust Cap Assembly for Plugs



## Accessories

### 390-5063-XX-XXX-XX

■ Rubber Dust Cap Assembly for Receptacles



| Shell size | Part number        | Item 1 Cap   |              |
|------------|--------------------|--------------|--------------|
|            |                    | ØF           | K            |
| 06         | 390-5064-06-XXX-XX | .450 (11.43) | .550 (13.97) |
| 07         | 390-5064-07-XXX-XX | .525 (13.34) | .550 (13.97) |
| 08         | 390-5064-08-XXX-XX | .595 (15.11) | .550 (13.97) |
| 09         | 390-5064-09-XXX-XX | .665 (16.89) | .550 (13.97) |
| 10         | 390-5064-10-XXX-XX | .735 (18.67) | .550 (13.97) |

| Supplied with      |               |                      |                     |
|--------------------|---------------|----------------------|---------------------|
| Part number        | Item 5 Eyelet | Item 6 Crimp ferrule | Item 7 Large eyelet |
| 390-5064-XX-XXX-01 | –             | –                    | –                   |
| 390-5064-XX-XXX-02 | –             | 1                    | –                   |
| 390-5064-XX-XXX-03 | 1             | –                    | –                   |
| 390-5064-XX-XXX-04 | 1             | 1                    | –                   |
| 390-5064-XX-XXX-05 | –             | –                    | 1                   |

All dimensions are in inches (mm shown in brackets) and are for reference only. Figure enlarged scale.

| Shell size | Part number        | Item 1 Cap   |              |
|------------|--------------------|--------------|--------------|
|            |                    | ØF           | K            |
| 06         | 390-5063-06-XXX-XX | .450 (11.43) | .550 (13.97) |
| 07         | 390-5063-07-XXX-XX | .525 (13.34) | .550 (13.97) |
| 08         | 390-5063-08-XXX-XX | .595 (15.11) | .550 (13.97) |
| 09         | 390-5063-09-XXX-XX | .665 (16.89) | .550 (13.97) |
| 10         | 390-5063-10-XXX-XX | .735 (18.67) | .550 (13.97) |

| Supplied with      |               |                      |                     |
|--------------------|---------------|----------------------|---------------------|
| Part number        | Item 5 Eyelet | Item 6 Crimp ferrule | Item 7 Large eyelet |
| 390-5063-XX-XXX-01 | –             | –                    | –                   |
| 390-5063-XX-XXX-02 | –             | 1                    | –                   |
| 390-5063-XX-XXX-03 | 1             | –                    | –                   |
| 390-5063-XX-XXX-04 | 1             | 1                    | –                   |
| 390-5063-XX-XXX-05 | –             | –                    | 1                   |

All dimensions are in inches (mm shown in brackets) and are for reference only. Figure enlarged scale.

## Accessories

### Overmoulded cable harnesses using Terrapin connectors



Amphenol Ltd design, prototype and manufacture a wide range of both standard and customised cable harness assemblies utilising overmould technology. The Terrapin connector range has been designed specifically to lend itself to this method of termination.

Amphenol Ltd's capability in manufacturing is matched by our engineering expertise, we are able to offer a full design and development service from drawing conception to production delivery.

Overmoulding has fast become widely recognised for the benefits it brings to equipments used in both military and harsh environment situations.

| Military/harsh environment situations  | Typical applications   |
|--|--|
| <ul style="list-style-type: none"> <li>• Both standard and custom profile mouldings available</li> <li>• In-house design and prototype facility</li> <li>• Aesthetically uniform product</li> <li>• Repeatable high complexity mouldings</li> <li>• Low cost and repair by replacement</li> <li>• Robust and tamper-proof</li> <li>• Straight and angled mouldings</li> <li>• Low profile mouldings</li> <li>• Finger grips, logos and tactile indicators optional</li> <li>• Mould material suitable for NBC washdown</li> <li>• High degree of sealing – IP68</li> </ul> | <ul style="list-style-type: none"> <li>• Chemical detection units</li> <li>• Comms units</li> <li>• Display Modules</li> <li>• GPS</li> <li>• Headsets</li> <li>• Hubs</li> <li>• LAN Switches</li> <li>• Radios</li> <li>• Routers</li> <li>• Ruggedised laptops</li> <li>• Sensor units</li> <li>• Surveillance and rangefinders</li> <li>• Weapons systems</li> </ul> |

## Notes

Products are sold subject to Amphenol's conditions of sale ("the standard conditions"). All specifications and statements contained herein are believed to be correct at the time of printing, but no representation or warranty, express or implied, is given as to any specification or statement contained herein. Product specifications including performance characteristics are typical only and subject to deviation. Specifications are also subject to change without notice. Users should not assume that all safety measures are indicated or that other measures may not be required. No representation or warranty, express or implied, is given that any use of products (including any stated or suggested use) does not infringe any patent, registered design or other third party rights and no stated or suggested use of products can be taken to recommend any such infringement.

# Amphenol®

For more information call **+44 (0)1227 773200**

Amphenol Ltd Thanet Way Whitstable Kent CT5 3JF | Email: [terrapin@amphenol.co.uk](mailto:terrapin@amphenol.co.uk) | [www.amphenol.co.uk](http://www.amphenol.co.uk)

November 2010