

FLUKE®

1AC-I VoltAlert™

Non-contact voltage detection
you can rely on.

Technical Data

New



1AC-I is the latest product in the VoltAlert™ ac non-contact voltage tester family from Fluke and is designed to be pocket-sized and easy to use. Just touch the tip to a terminal strip, outlet, or cord. When the tip glows red you

know there's voltage in the line. Electricians, maintenance, service and safety personnel, as well as DIY, can quickly test for energized circuits and defective grounds on the factory floor, in the shop, or at home.



Features and benefits

- **NEW!** Always on, uses special low power circuitry to sustain battery life and for added dependability
- **NEW!** Includes innovative 'Battery Check' button function to ensure battery and unit are in good condition when using the tester, giving peace of mind any time you are testing*
- Voltage detection of 90 to 1000 V ac, a wide range to suit a broad spectrum of residential, commercial and industrial needs
- CAT IV 1000 V overvoltage rated product for best-in-class added user protection
- Integrated clip design, optimized for pocket storage in a wide range of clothing thicknesses
- Powered by 2 AAA batteries (included)
- Two-year warranty
- Rugged, reliable, and is built with the quality and accuracy expected from a Fluke tool

*Use of Battery Check function is optional and for convenience only, it is not intended as a substitute for checking the unit on a known live source before and after use.

Specifications

Safety compliance

Meets IEC 61010-1:2001, UL 61010-1 (2nd ed.), CAN/CSA-C22.2 No. 61010-1-04, and ISA-82.02.01 Pollution Degree 2

EMC compliance

Meets IEC 61326-1:2006

Operating

90 V ac to 1000 V ac

Temperature

Operating: -10 °C to 50 °C (-14 °F to 122 °F)
Storage: -10 °C to 50 °C (-14 °F to 122 °F)

Humidity

0 % to 95 % (0 °C to 30 °C),
0 % to 75 % (30 °C to 40 °C),
0 % to 45 % (40 °C to 55 °C)

Altitude

2000 m (CAT IV 1000 V)

Battery life

Typical battery life of greater than one year

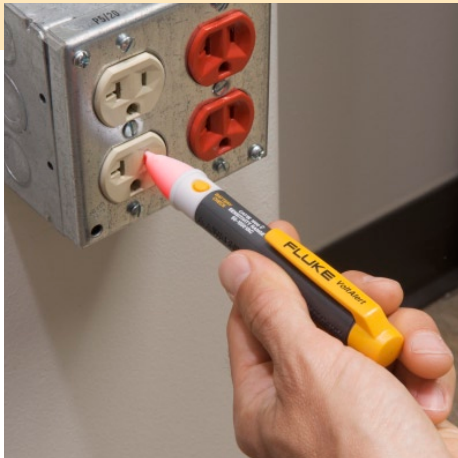
Ordering information

FLUKE-1AC-A1-I Non Contact Voltage Detector, 90-1000 V

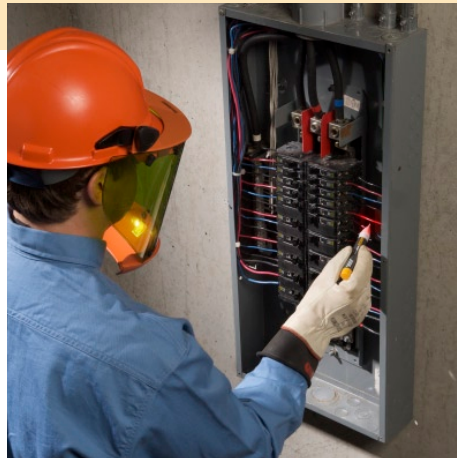
FLK-1AC-A1-I-5PK Non-Contact Voltage Detector, 90-1000 V, 5-Pack

FLUKE-1AC-A1-I/CT Non-Contact Voltage Detector, 90-1000 V, Countertop Display version

Includes: Two AAA batteries, application guide, and instruction sheet



Outlet socket



Electrical panel



Junction box

Others in the VoltAlert Family



1AC-II



LVD2

	1AC-I 90-1000 V ac CAT IV 1000 V	1AC-II** 90-1000 V ac CAT IV 1000 V	LVD2 90-600 V ac CAT IV 600 V
Voltage Detection	■	■	■
Battery included	■	■	■
Battery Check	■		
On/Off Button		■	■
Voltbeat™		■	
Audible/Silent		■	
Dual Sensitivity			■
LED Flashlight			■

**Also available in 20-90 V low voltage version as 1LAC-II.

Fluke. *Keeping your world up and running.®*

Fluke Corporation
PO Box 9090, Everett, WA 98206 U.S.A.

Fluke Europe B.V.
PO Box 1186, 5602 BD
Eindhoven, The Netherlands

For more information:
In the U.S.A. (800) 443-5853 or
Fax (425) 446-5116
In Europe/M-East/Africa +31 (0) 40 2675 200 or
Fax +31 (0) 40 2675 222
In Canada (800)-36-FLUKE or
Fax (905) 890-6866
From other countries +1 (425) 446-5500 or
Fax +1 (425) 446-5116
Web access: <http://www.fluke.com>

©2009 Fluke Corporation.
Specifications subject to change without notice.
Printed in U.S.A. 7/2009 3479573A D-EN-N

Modification of this document is not permitted without written permission from Fluke Corporation.