

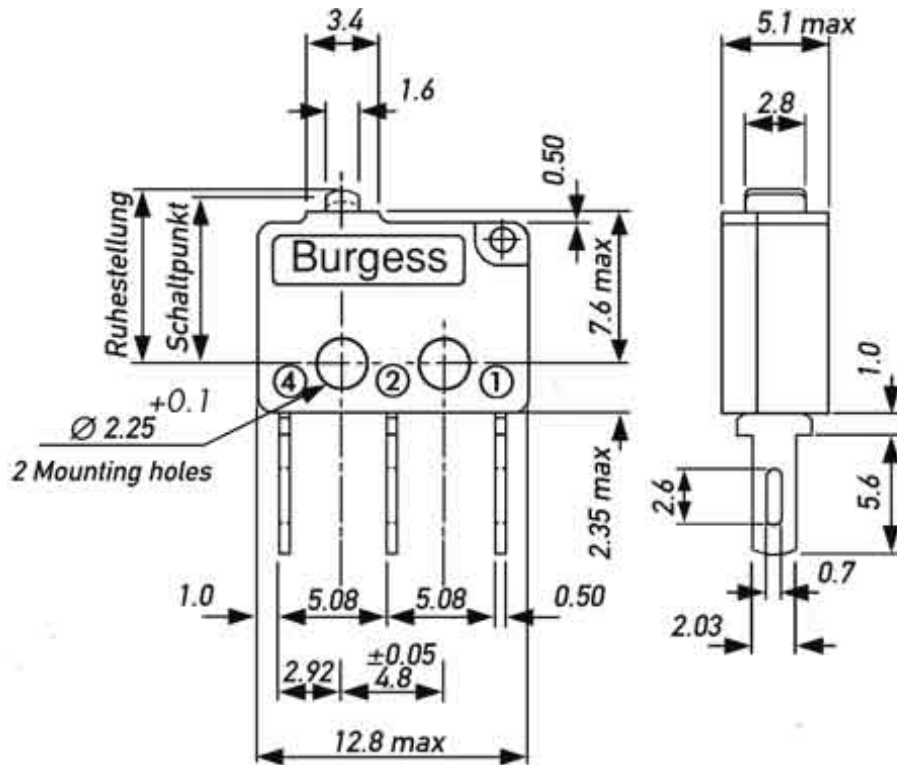


F4

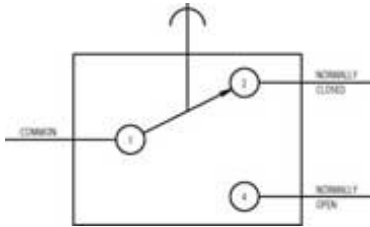
Type	<ul style="list-style-type: none"> • Switches
Product type	<ul style="list-style-type: none"> • Burgess Ultraminiature Micro switch
Typical markets	<ul style="list-style-type: none"> • home appliances • building automation & security • distribution
Typical applications	<ul style="list-style-type: none"> • iron stations • electric knives • circuit breakers • international catalog distributors
Dimensions	<ul style="list-style-type: none"> • 12.8 x 10 x 5 mm
Characteristics	<ul style="list-style-type: none"> • small size • long mechanical and electrical life • solder • PCB terminals
Rating	<ul style="list-style-type: none"> • 250 VAC, 5 A
Actuators	<ul style="list-style-type: none"> • plunger • plain lever • simulated roller lever / cam follower
Approvals/Quality	<ul style="list-style-type: none"> • UL • CSA



Dimensions



Circuits



Performance

Preferred range

Partnumber	Terminal	Actuator	Electrical rating @	
			ENEC	UL/CSA
F4T7UL	solder	plunger	VAC A	250 VAC 5 A
F4T7GPUL	solder	plunger	VAC A	250 VAC 5 A
F4T7Y1UL	solder	plain lever 21.0 mm	VAC A	250 VAC 5 A

<u>F4T7Y1ULGPUL</u>	solder	plain lever 21.0 mm	VAC A	250 VAC 5 A
<u>F4T7YCUL</u>	solder	cam follower lever 16.9 mm	VAC A	250 VAC 5 A
<u>F4T7YCGPUL</u>	solder	cam follower lever 16.9 mm	VAC A	250 VAC 5 A





F4T7YCUL

Dimensions	12.8 mm
Dimensions	10 mm
Dimensions	5 mm
Terminal	solder
Circuit	CO
Protection	IP40
Actuator	cam follower lever 16.9 mm
Contacts	Ag
Electrical rating UL/CSA	250 VAC
Actuating force	0.7 Nm
Release force	0.09 N
Free position (FP)	11.7 mm
Operating position (OP)	10.3 mm
Movement	0.45 mm
Total travel position (TP)	depress to case