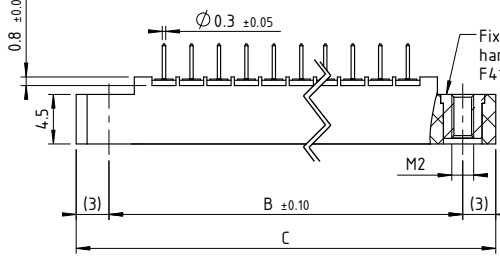
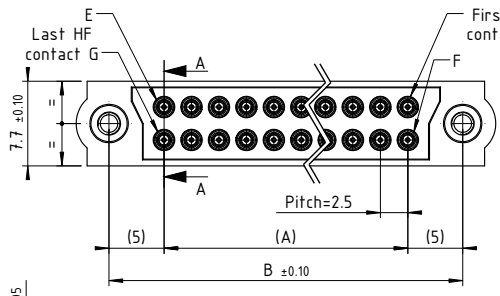
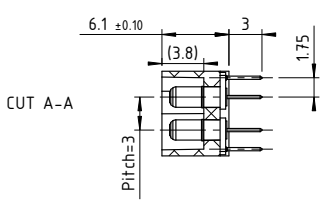
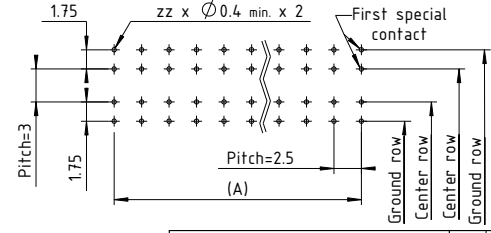


4
3
2
1

D C B A



Recommended PCB layout :



TECHNICALS FEATURES

MATERIALS

INSULATOR : Special Special PPS (Polyphenylene Sulfide Fibreglass filled thermoplastic) UL 94-V0

- Radiation resistance
- No humidity absorption
- Oxygen free

Note : PPS characteristics are recognized for space application

FIXING HARDWARE :

- Jackscrew : Stainless steel

TECHNICAL FEATURES for 22 HF CONTACTS

MATERIAL

- Body : Copper alloy / Ni + Au 0.5µ
 - Inner contact : Copper alloy / Ni + Au 0.75µ
 - Insulator : PTFE
- Do not comply with radiation

MECHANICAL

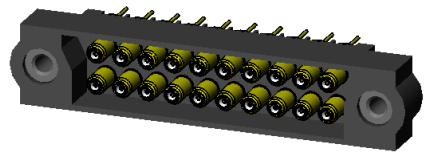
- Mechanical operations : 2500 cycles min.
- Insertion force : From 0.60 to 5N per contact
- Withdrawal force : From 0.50 to 2N per contact
- Secure overlapping : 1.30 mm

ELECTRICAL

- Impedance : 50Ω
- Insulator resistance : 10¹¹ mΩ / 250V (RMS)
- SWR (Stationary Wave Rate) : < 1.05 + 0.04 F (GHz)
- Frequency range : 1.5 GHz
- Insulation between 2 contacts : -100dB

ENVIRONMENTAL

- Temperature range : From -60°C to +260°C
- Vibration severity : 0.75mm, 10 g RMS 6 hours long random with superimposed sinusoid. No intermitencies measured when using an H.S.L.L. (High Speed Logic Interrupt) detector with a trip threshold of 2 ns
- Salt spray test : 96 hrs
- Humidity test : 56 days @ 90% humidity



Marking referee page 12-13 of CMM catalogue

CONNECTOR SERIES 340 MALE							
HF contact number zz	Distance between the axes in mm		Length in mm	HF contact reference mark number			
	A	B		D	E	F	G
04	2.5	12.5	18.5	1	2	3	4
06	5	15	21	1	3	4	6
08	7.5	17.5	23.5	1	4	5	8
10	10	20	26	1	5	6	10
12	12.5	22.5	28.5	1	6	7	12
14	15	25	31	1	7	8	14
16	17.5	27.5	33.5	1	8	9	16
18	20	30	36	1	9	10	18
20	22.5	32.5	38.5	1	10	11	20
22	25	35	41	1	11	12	22
24	27.5	37.5	43.5	1	12	13	24
26	30	40	46	1	13	14	26
28	32.5	42.5	48.5	1	14	15	28
30	35	45	51	1	15	16	30
32	37.5	47.5	53.5	1	16	17	32
34	40	50	56	1	17	18	34
36	42.5	52.5	58.5	1	18	19	36
38	45	55	61	1	19	20	38
40	47.5	57.5	63.5	1	20	21	40
42	50	60	66	1	21	22	42
44	52.5	62.5	68.5	1	22	23	44
46	55	65	71	1	23	24	46
48	57.5	67.5	73.5	1	24	25	48
50	60	70	76	1	25	26	50
52	62.5	72.5	78.5	1	26	27	52
54	65	75	81	1	27	28	54
56	67.5	77.5	83.5	1	28	29	56
58	70	80	86	1	29	30	58
60	72.5	82.5	88.5	1	30	31	60
62	75	85	91	1	31	32	62
64	77.5	87.5	93.5	1	32	33	64

 www.nicomatic.com Mail : nicomatic@nicomatic.fr Tel : +33 (0)4.50.36.13.85	Iss	2	12/09/08	H.L.	E.M.	D.Z.
	Date	Drawn	Checked	Approved		
Folder : X:\Méthodes\Plans clients\Plans clients 2D\25 - CMM340\Connecteurs Mâles\341D\341D000F41-00zz-130012_cl						
Item : Connector CMM340 M straight on PCB, zz HF contacts 22-1300-12, F41						

This document and drawings, sketches, and schematic drawings are the property of the NICOMATIC company, and no parts thereof may be reproduced and used without the written consent of the owner. Law dated 11.03.1902

Catalogue Reference : 341D000F41-00zz-130012

General tolerance	±0.2	Scale	2:1	Page	1/1
-------------------	------	-------	-----	------	-----



A4