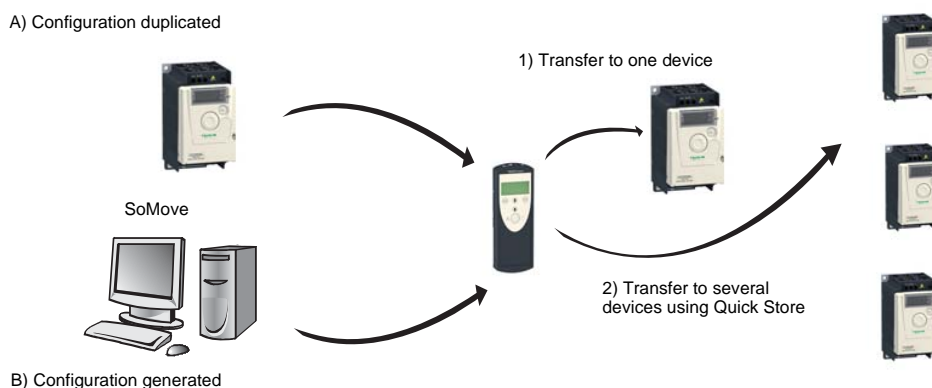


Introduction

The Multi-Loader is a standalone tool for transferring configuration files to devices with their power on or off.

- The Multi-Loader is used to set device parameters by loading a configuration file onto the device(s). (Devices must have the same reference. A consistency check is performed before the data transfer). On some devices the parameters can be set with them still in their box or before they are powered up.
 - This portable tool has been designed to load up to fifty devices a day and has a battery life of six days. However, this depends on the transfer time, the size of the configuration files and other parameters associated with the settings for the Multi-Loader and the connected devices.
 - It can configure ten drives in less than five minutes.
 - The Multi-Loader can provide the power supply for certain devices if they are turned off during the transfer.
- The Multi-Loader is also a firmware update tool.
 - The "**Password FW**" mode can be used to help protect against incorrect operation by means of a password. See the "**Password FW**" menu on page [27](#).

Duplicating or generating configuration files



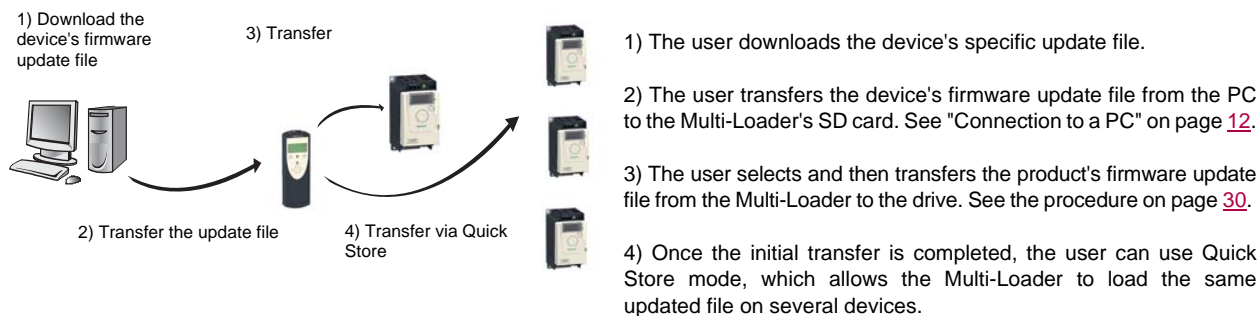
A) The device's configuration file is copied to the Multi-Loader's SD card. See the procedure on page [15](#).

B) The configuration file is generated by SoMove then transferred to the Multi-Loader's SD card. See the procedure on page [15](#).

1) The user selects and then transfers the configuration file from the Multi-Loader to the device. See the procedure on page [16](#).

2) Once the initial transfer is complete, the user can use Quick Store mode, which allows the Multi-Loader to load the same update file on several devices in succession. (See page [17](#))

Updating device firmware



All representations of the ATV12 drive throughout this document are given by way of example only to symbolize a device. Please refer to the device compatibility tables on pages [14](#) and [29](#).

All bold blue text in the manual (e.g. "**Main menu / Action**") corresponds to the messages displayed on the Multi-Loader screen.

Receipt of the Multi-Loader



Product reference:

Check that the product reference printed on the label is the same as that on the delivery note. This should also correspond with the number on the purchase order.

Contents of the Multi-Loader box (VW3A8121)

Check that the Multi-Loader box contains the following:

- 1 x Multi-Loader
- 4 x LR6 (AA) batteries
- 1 x SD card
- 1 x standard USB type A to Mini-B cable
- 1 x RJ45 (RJ45/RJ45) cable
- 1 x RJ45 female/female adapter (VW3A1105)
- 1 x carry case
- 1 x simplified manual (English and French)
- 1 x impact resistant cover

Available as an option

- Multi-Loader Cordset (VW3A8126)

Receipt of the Multi-Loader

Presentation

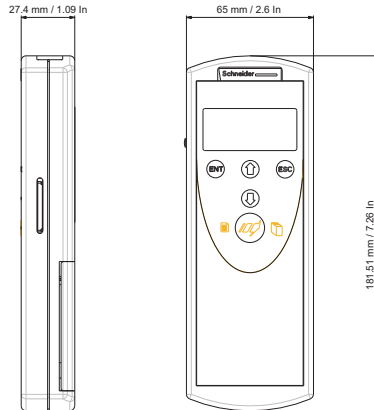


Figure 1

Weight

250 grams (including batteries)

Data storage

One SD card is supplied with the Multi-Loader. Any standard SD card is compatible with the tool.

Language

The menus are in English.

Power supplies

Two options are available for powering the Multi-Loader:

- 4 x LR6 (AA) alkaline batteries (batteries included)
- NiMH rechargeable batteries (batteries and charger not included)

Battery life

Depending on the type of batteries used, the Multi-Loader can transfer up to 300 configuration files.

Power save feature

To prolong battery life, a standby function is activated within a programmable time delay; the Multi-Loader is reactivated by pressing the ON/OFF button. (See the display parameters menu on page [28](#).)

Connection to a powered-up PC or device can also help conserve battery power, as the power supply from the connected device takes over from the batteries.