

# DISC THERMOSTATS

## Snap Action Thermostats



### ADVANTAGES

- **1/2" Bimetal Disc Thermostats**
  - Proven reliability in a compact, versatile, cost-effective design
  - High speed contact separation provides long contact life
  - Statistical process control of manufacturing assures high product quality levels
  - Controls are 100% operation checked

### FEATURES

- **1/2" Bimetal Disc Thermostats**
  - Loose ring, stainless steel mounting brackets
  - 1/4" quick connect termination
  - Automatic reset
  - Enclosed Disc
  - Aluminum Disc Cup

### SPECIFICATIONS

- **1/2" Bimetal Disc Thermostats**
  - Single Pole, Single Throw
  - Available in either open or close on temperature rise
  - General Electrical Ratings
    - Resistive: 15A @ 120VAC, 10A @ 240VAC
    - Inductive: 3.0FLA-12.0LRA @ 120VAC,  
1.5FLA-6.0LRA @ 240VAC
    - Pilot Duty: 125VA
    - Consult factory for D.C. rating
- Calibration temperatures, differentials, and tolerances vary by item number  
(see data table in this section for details)
  - Agency Recognition: U.L. File# E19279 & MH-5304  
C.S.A. File# LR19988  
VDE Licensed



### CUSTOM DESIGN CAPABILITIES

- **1/2" Bimetal Disc Thermostats**
  - Operating temperature up to 350° F
  - Terminal orientation: 30 or 45 degrees
  - Manual Reset or Single Operation
  - High temperature construction
- Custom labeling and packaging
- 500-1000 pieces minimum order and release for most custom designs.

## APPLICATIONS

### 1/2" Bimetal Disc Thermostats

- Coffee Makers
- Dishwashers
- Electric Heaters
- Ovens
- Gas Furnaces



# DISC THERMOSTATS

## Snap Action Disc Thermostats



— Automatic Reset

STO-160

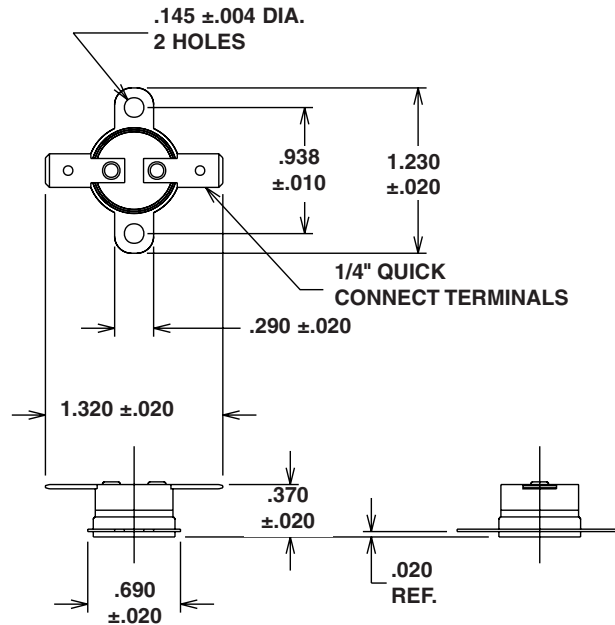
### Operating Specifications

Sec.	STANCOR PART NUMBER	Operating Range <sup>1</sup>		Function <sup>2</sup>	Differential <sup>3</sup>	
		°F	°C			
A	STO-60	55 to 65	13 to 18	Opens	20°F	12°C
	STO-85	80 to 90	27 to 32	Opens	15°F	8°C
	STC-100	93 to 107	34 to 42	Closes	30°F	17°C
	STO-110	105 to 115	41 to 46	Opens	30°F	17°C
B	STO-120	115 to 125	46 to 52	Opens	30°F	17°C
	STC-120	113 to 127	45 to 53	Closes	30°F	17°C
	STO-140	135 to 145	57 to 63	Opens	30°F	17°C
	STC-140	133 to 147	56 to 64	Closes	30°F	17°C
C	STO-150	145 to 155	63 to 68	Opens	30°F	17°C
	STO-160	155 to 165	68 to 74	Opens	30°F	17°C
	STO-170	165 to 175	74 to 79	Opens	30°F	17°C
	STC-170	162 to 178	72 to 81	Closes	30°F	17°C
	STO-175	170 to 180	77 to 82	Opens	15°F	8°C
D	STO-180	175 to 185	79 to 85	Opens	30°F	17°C
	STC-180	172 to 188	78 to 87	Closes	30°F	17°C
	STO-190	185 to 195	85 to 91	Opens	30°F	17°C
	STO-210	204 to 216	96 to 102	Opens	30°F	17°C
	STO-220	214 to 226	101 to 108	Opens	30°F	17°C
E	STC-225	217 to 232	103 to 111	Closes	30°F	17°C
	STO-230	224 to 236	107 to 113	Opens	30°F	17°C
	STC-240	229 to 251	109 to 122	Closes	100°F	56°C
	STO-250	244 to 256	118 to 124	Opens	30°F	17°C
	STO-325	315 to 335	157 to 169	Opens	50°F	28°C

### Common Ratings

Load	120 VAC	240 VAC	DIMENSIONS INCHES			Weight (oz.)	Agency Certif.
			L	Case W	H		
Resistive	15 Amps	10 Amps	1.23	1.32	0.37	0.2	UL
Inductive	3.0 FLA - 12.0 LRA	1.5 FLA - 6.0 LRA					CSA
Pilot Duty	125 VA	125 VA					VDE

\* Agency Certification Note: UL Recognized (File E19279 and MH-5304)  
CSA Certified (File LR19988)  
VDE Licensed



1 - Operating Range: Range of temperature at which disc thermostat performs switching function.

2 - Function:

- Opens - Normally closed circuit - opens within specified temperature range.
- Closes - Normally open circuit - closes within specified temperature range.

3 - Differential: Temperature drop below operating range minimum necessary for disc to reset.