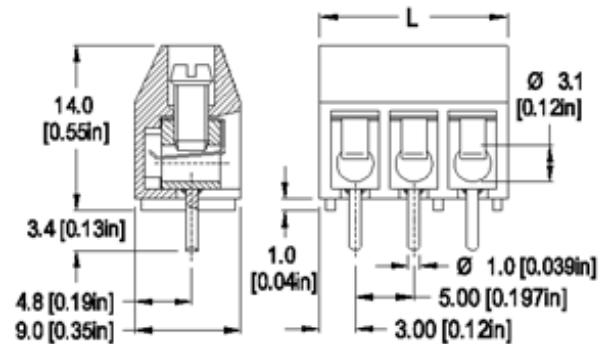


TYPE 970-THR (-DS)

5 mm spacing - 2 to 12 poles



Series	Download PDF	Download DXF	Can plug with	How to order	Color specifications	Print
--------	--------------	--------------	---------------	--------------	----------------------	-------



Dimensions: mm (in.)

Description

5 mm Terminal Block with wire protector addressing THR (through hole reflow) PCB assembly applications. Contains captive finger proof screws. Standoffs underneath the molding allow for visual inspection of the solder joints and convect heated air flow during the reflow soldering process. Materials withstand high reflow temperatures without deforming or melting.

- Through Hole Reflow
- Wire entrance parallel to PC Board

Technical Data

Center to Center Spacing: 5 mm (0.197 in)

Nominal Cross Section:

2.5 mm² (3874 mils²)

Wire Stripping Length: 6 mm (0.25 in.)

Recommended Hole Diameter in PC Board:

1.4 mm (0.055 in.)

Application

Approval Information

UL File No.E69841

CSA File No.LR24322

Rating	Current(A)	Voltage(V)	Application group	AWG
UL	20	300	B,D	26-12
CSA	15	300	B,D,E	22-10

* 970-THR-DS is CSA certified for 26-10 AWG.
UL: 26-24 AWG range for factory wiring only.

Screw Tightening Torque:

UL: max. 4.5 lbf.in.

CSA: max. 0.51 Nm

International Approvals:



Rated Impulse Withstand Voltage: 2500 V

International Approvals Notes:

ROHS WEEE Pb free compliant.

Material

WECO's THR designs are adapted for easy integration into your processes. Standoffs provide for good convective heat circulation for reliable soldering through the elimination of cold spots and also allow for a visual inspection of the solder joints. The main advantage of through-hole terminal blocks is their reliable mechanical strength. This robustness is particularly important for applications exposed to harsh environments or strong vibrations such as mobile equipment, engine or motor compartments.

Molding: Polyamide 4.6, 30% GF (glass fiber reinforced), self extinguishing to UL 94, V-0, color black

Temperature limits:

Short Time: 260C (500F)

Continuous: RTI 105C (221F)

Low Limit: -40C (-40F)

Comparative Tracking Index: CTI > 250

Oxygen Index Rating: 37%

Terminal Body: tin plated copper alloy

Wire Protector: tin plated copper alloy

Screw: M3, slotted head, yellow chromate passivated, zinc plated, steel

Solder Pin: 1.0 mm (0.04 in.), tin plated copper alloy

 [Top of page](#)

How to order

Item **970-THR (-DS)**

Options

- Consecutive Numbering (White, hot stamped numbers)
- Special Marking (please provide sketch)
- Clear chromate passivated, zinc plated, steel screws
- Gold Plating (5 micro inches)
- Gold Plating (30 micro inches)
- Silver Plating (30 micro inches)
- Tape and Reel Assembly

Note: Plated component: terminal body

Ordering Note: See download PDF for complete tape and reel assembly specifications

Request sample

Request quote

Place order

Quantity

Accessories

[BST Self Adhesive Marking Strips.](#)

[Consecutively numbered.](#)

[Jumper, Type 970-J1.](#)

[Jumper, Type 970-J2.](#)

WIRE PROTECTOR:
with: - DS

POLES:
02 to 12

970-THR

/

[Add to shopping cart](#)