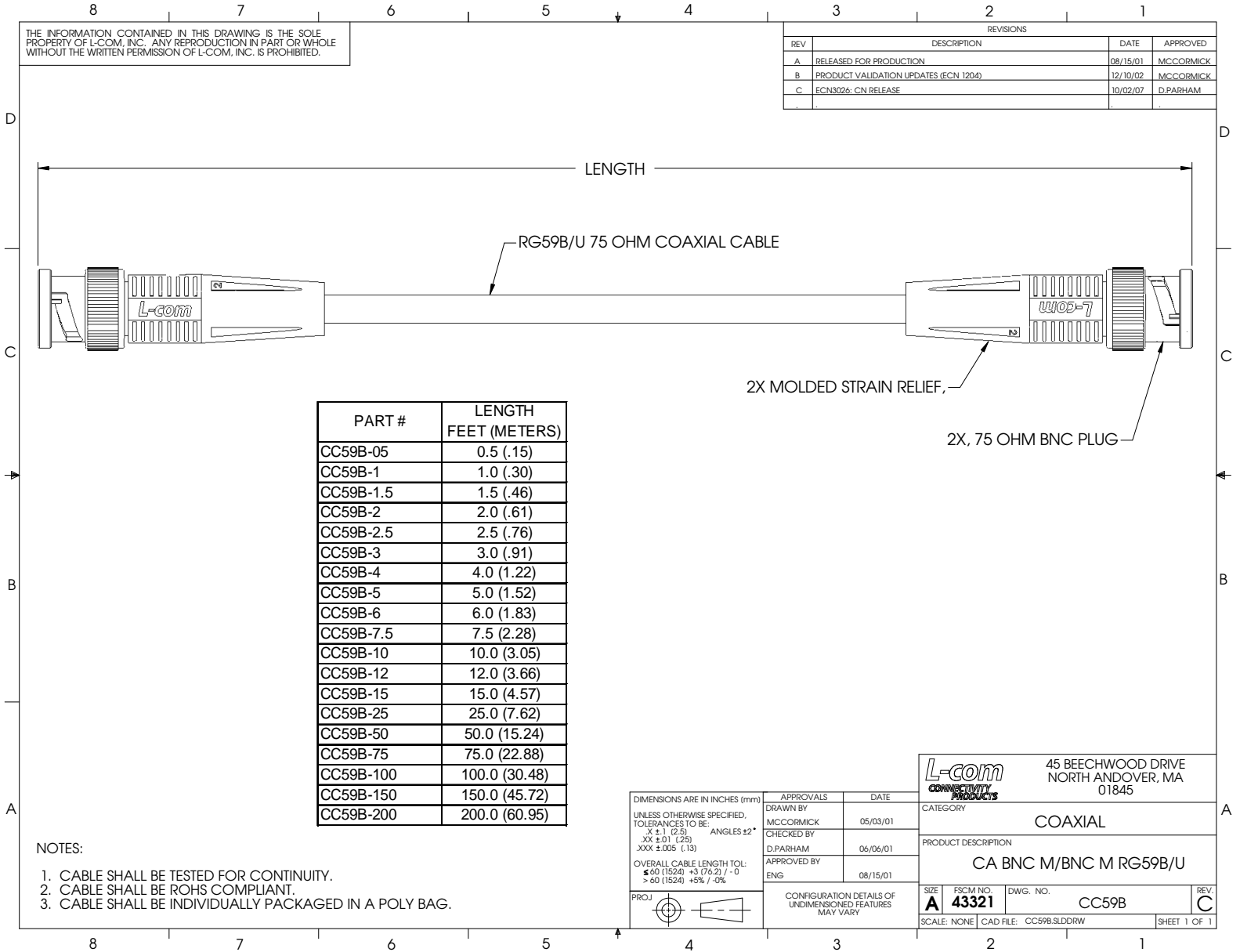


THE INFORMATION CONTAINED IN THIS DRAWING IS THE SOLE PROPERTY OF L-COM, INC. ANY REPRODUCTION IN PART OR WHOLE WITHOUT THE WRITTEN PERMISSION OF L-COM, INC. IS PROHIBITED.

REVISIONS			
REV	DESCRIPTION	DATE	APPROVED
A	RELEASED FOR PRODUCTION	08/15/01	MCCORMICK
B	PRODUCT VALIDATION UPDATES (ECN 1204)	12/10/02	MCCORMICK
C	ECN3026: CN RELEASE	10/02/07	D.PARHAM



PART #	LENGTH FEET (METERS)
CC59B-05	0.5 (.15)
CC59B-1	1.0 (.30)
CC59B-1.5	1.5 (.46)
CC59B-2	2.0 (.61)
CC59B-2.5	2.5 (.76)
CC59B-3	3.0 (.91)
CC59B-4	4.0 (1.22)
CC59B-5	5.0 (1.52)
CC59B-6	6.0 (1.83)
CC59B-7.5	7.5 (2.28)
CC59B-10	10.0 (3.05)
CC59B-12	12.0 (3.66)
CC59B-15	15.0 (4.57)
CC59B-25	25.0 (7.62)
CC59B-50	50.0 (15.24)
CC59B-75	75.0 (22.88)
CC59B-100	100.0 (30.48)
CC59B-150	150.0 (45.72)
CC59B-200	200.0 (60.95)

- NOTES:
1. CABLE SHALL BE TESTED FOR CONTINUITY.
 2. CABLE SHALL BE ROHS COMPLIANT.
 3. CABLE SHALL BE INDIVIDUALLY PACKAGED IN A POLY BAG.

DIMENSIONS ARE IN INCHES (mm) UNLESS OTHERWISE SPECIFIED, TOLERANCES TO BE: .X ± .1 (2.5) ANGLES ±2° .XX ± .01 (.25) .XXX ± .005 (.13) OVERALL CABLE LENGTH TOL: ≤ 60 (1524) +3 (76.2) / -0 > 60 (1524) +3% / -0%	APPROVALS	DATE
	DRAWN BY MCCORMICK	05/03/01
	CHECKED BY D.PARHAM	06/06/01
	APPROVED BY ENG	08/15/01
PROJ	CONFIGURATION DETAILS OF UNDIMENSIONED FEATURES MAY VARY	

	45 BEECHWOOD DRIVE NORTH ANDOVER, MA 01845
	CATEGORY COAXIAL
	PRODUCT DESCRIPTION CA BNC M/BNC M RG59B/U
	SIZE A FSCM NO. 43321 DWG. NO. CC59B REV. C SCALE: NONE CAD FILE: CC59B.SLDDRW SHEET 1 OF 1