

## INTERFACES

### Relay Modules and Carriers Bussted Channels 35 or 32mm DIN Rail

Altech Bussted Relay Modules provide high density packaging of miniature general purpose relays with minimal hook-up wiring. Select from bussted DC Positive (DC Negative switching), bussted DC Negative (DC Positive switching), or bussted AC neutral.

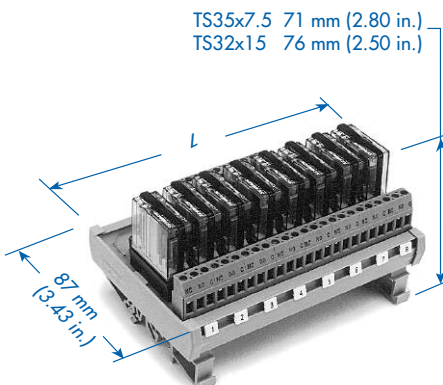
Ideal for traditional mechanical relay input/output array between a single logic system and peripheral devices, or between logic systems in a network as well as their peripheral and field devices.

Load your own relays in our RCB Relay Carrier, or order the RMB Relay Module complete with 8 or 16 relays.

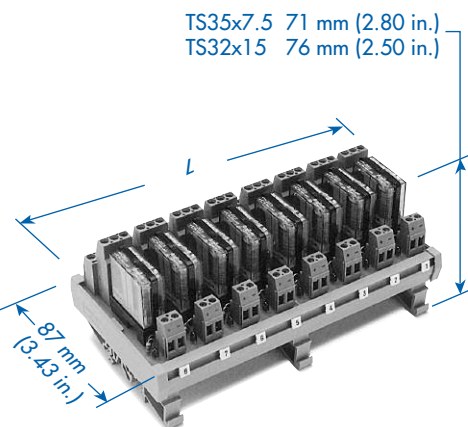
*Call us with your custom module requirements!*

- Screw-Cage Clamp Connections
- LED Coil Voltage Indicator
- Reverse DC Polarity LED Protection
- Surge Suppression With DC Coil
- DIN Rail Mount, Panel Mount Available

## RC1 / RM1 Single Pole Double Throw


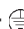


## RC2 / RM2 Double Pole Double Throw



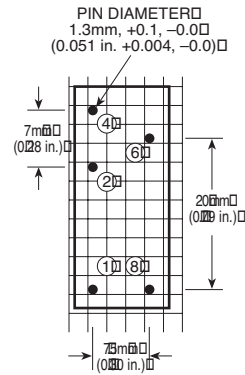
Wire Range	Contact Ratings	
	Current	Voltage
0.5-4mm <sup>2</sup>		250VAC/ 30VDC
30-14 AWG	10A	

Wire Range	Contact Ratings	
	Current	Voltage
0.5-4mm <sup>2</sup>		250VAC/ 30VDC
30-14 AWG	2 x 6A	

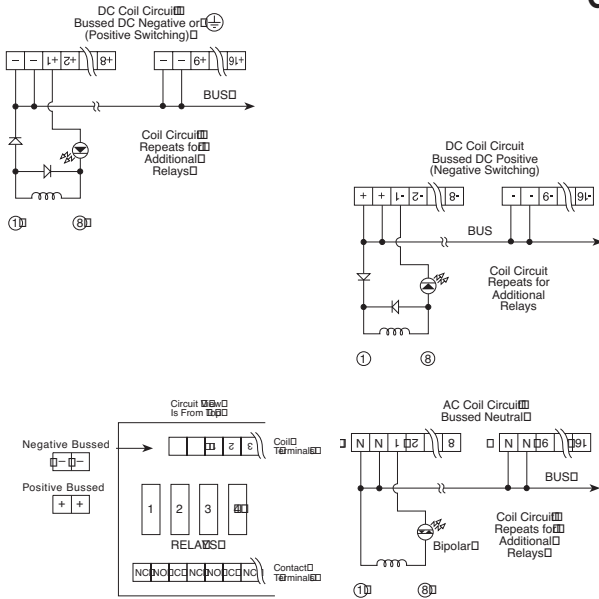
		Carrier Only		Module with Relays		Carrier Only		Module with Relays	
Ordering Information	Module Length (L) mm (in.)	Type	Cat. No.	Type	Cat. No.	Type	Cat. No.	Type	Cat. No.
8 Channel, Bussted DC+ 12V DC(E) 24V DC(G)	125 (4.92)	RCB1E8V	8912.5	RMB1E8V	8912.2	RCB2E8V	8923.5	RMB2E8V	8923.2
		RCB1G8V	5494.5	RMB1G8V	5494.2	RCB2G8V	8924.5	RMB2G8V	8924.2
8 Channel, Bussted DC-  12V DC(E) 24V DC(G)	125 (4.92)	RCB1E8G	8912.6	RMB1E8G	8912.3	RCB2E8G	8923.6	RMB2E8G	8923.3
		RCB1G8G	5492.5	RMB1G8G	5492.2	RCB2G8G	8924.6	RMB2G8G	8924.4
8 Channel, Bussted AC (N) 110V AC(U) 220V AC(X)	125 (4.92)	RCB1U8	5502.5	RMB1U8	5502.2	RCB2U8	8925.5	RMB2U8	8925.2
		RCB1X8	8913.6	RMB1X8	8913.3	RCB2X8	8925.6	RMB2X8	8925.3
16 Channel, Bussted DC+ 12V DC(E) 24VDC(G)	248 (9.76)	RCB1E16V	8914.5	RMB1E16V	8914.2	RCB2E16V	8926.5	RMB2E16V	8926.2
		RCB1G16V	5508.5	RMB1G16V	5508.2	RCB2G16V	8926.6	RMB2G16V	8926.3
16 Channel, Bussted DC-  12V DC(E) 24V DC(G)	248 (9.76)	RCB1E16G	8921.5	RMB1E16G	8921.2	RCB2E16G	8927.5	RMB2E16G	8927.2
		RCB1G16G	5506.5	RMB1G16G	5506.2	RCB2G16G	8927.6	RMB2G16G	8927.3
16 Channel, Bussted AC (N) 110V DC(U) 220V AC(X)	248 (9.76)	RCB1U16	5514.5	RMB1U16	5514.2	RCB2U16	8928.5	RMB2U16	8928.2
		RCB1X16	5514.6	RMB1X16	5514.3	RCB2X16	8928.6	RMB2X16	8928.3
		Std. Pk.: 1		Std. Pk.: 1		Std. Pk.: 1		Std. Pk.: 1	

## Single Pole Double Throw (SPDT)

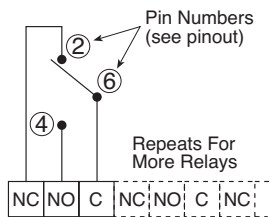
### Relay Pinout Bottom View



### Coil Circuits



### Contact Circuits



### Contact Specifications

#### SPDT Composite Rating:

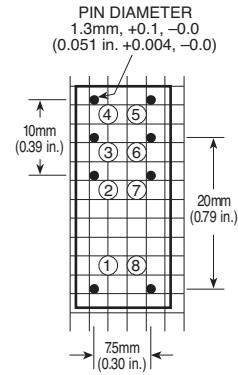
-Relay Socket:	10A
-Terminal Blocks:	15A
-PCB Trace for Contact Circuit	
At 30°C (86°F) temperature rise:	12A*
-PCB Trace for Coil Circuit	
At 30°C (86°F) temperature rise:	4A
-PCB Trace for Bus	
At 30°C (86°F) temperature rise:	16A
-Relay Contacts, AgCdO, Minimum Ratings	
Resistive - At 250VAC and 30VDC:	10A
Inductive - At 250VAC:	7.5A
At 30VDC:	5A
(p.f. = 0.4)	
-Minimum Breaking Capacity:	

### Contact Specifications

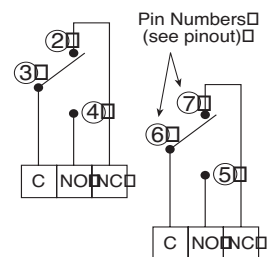
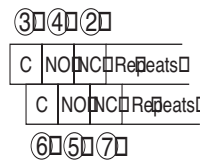
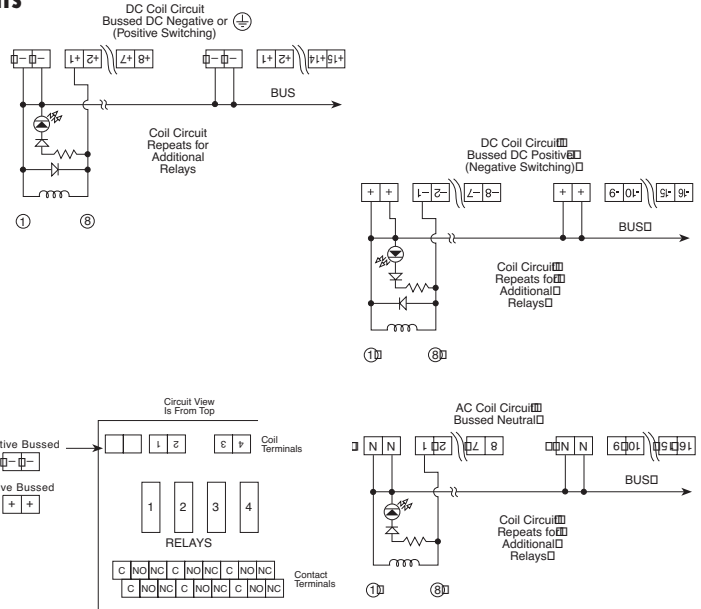
#### DPDT Composite Rating:

-Relay Socket:	2 x 8A
-Terminal Blocks:	10A
-PCB Trace for Contact Circuit:	15A
At 30°C (86°F) temperature rise:	8A
-PCB Trace for Bus	
At 30°C (86°F) temperature rise:	16A
-PCB Trace for Coil Circuit:	
At 30°C (86°F) temperature rise:	1A
At 30°C (86°F) temperature rise:	2A
-Relay Contacts, AgCdO, Minimum Ratings	
Resistive - At 250VAC and 30VDC:	8A
Rated at 250VAC	
Max. Breaking Voltage:	440VAC
"Make" Current:	12A
-Rated Minimum Breaking Capacity:	
2,000 VA Resistive	

## Double Pole Double Throw (DPDT)



### Coil Circuits



### Coil Specifications

Ambient Temperatures:  
-40° to +70°C (-40° to +158°F)

Coil Voltage VDC	Operate (pull-in) Max. VDC	Drop Out (Rel.) V Min. VDC	Coil Current mA	Coil Resistance ohms
12	18	8.8	55	220±15%
24	42	17.5	20	1,200±15%
110	132	96.0	8.9	9,000±15%
220	264	192.0	4.1	31,500±15%

Table values are for cold coil at 20°C (68°F) and exclude coil exterior circuit.

\* 12A overall rating, with 12A contact relays soldered directly to printed circuit board (no socket) are available. Please consult Altech.