

Metered Rack PDU

Rack PDU, Metered, Zero U, 15A, 100/120V, (16) 5-15



APC Metered Rack PDU , Input: 120V , Input Connections: NEMA 5-15P , Cord Length: 10 feet (3.05 meters) , Output: 120V , Output Connections: NEMA 5-15R

Includes: Cord retention bracket(s), Installation guide, Rack Mounting brackets, Toolless Mounting Kit, User Manual

Standard Lead Time: Usually in Stock

AP7831 Features

Toolless Mounting Capabilities	Units do not require additional tools to mount into APC NetShelter VX, which allows the users to quickly and easily mount units in the rear of the enclosure.
Vertical Mounting Capabilities	Easily mounts vertically in racks or enclosures and occupies zero U of valuable rack space, which allows more equipment in the rack. Units that mount vertically are optimized to fit in a NetShelter VX enclosures.

Metered Rack PDU Features & Benefits

Availability

Remote Management Capabilities Full-featured network management interfaces that provide standards-based management via Web, SNMP, and Telnet. Allows users to access, configure, and manage units from remote locations to save valuable time. Associated with this feature is the ability to quickly and easily upgrade the firmware via network download to installed units for future product enhancements. (Note: Only applicable for units categorized as Networked).

Local Current Monitoring Display The aggregate current draw per power distribution unit is displayed on the unit via a digital display. The local digital display helps installers avoid overloaded circuits by providing a visible warning when the current draw is close to the maximum amperage draw of the strip.

Alarm Thresholds Define alarm thresholds in order to avoid overloaded circuits. Network and visual alarms inform the user of possible problems. (Note: Only available on units with the current monitoring capabilities. Please see SKU specifications for availability)

Load indicator LED Indicates overload and warning conditions based on the user-defined alarm thresholds. Alerts users of potential overloaded circuits.

Integrates with InfraStruXure Central An IT-ready, scalable monitoring system that collects, organizes, and distributes critical alerts, surveillance video and key information, providing a unified view of complex physical infrastructure environments from anywhere on the network

Flash Upgradeable Quickly and easily upgrade firmware via network download for future product enhancements. Eliminates the need to replace products already installed in the field when new features are released. (Note: Networked units only)

Agility

Rack-Mountable Includes horizontal, vertical, and toolless-mount varieties. Puts power where it is needed most - in the racks near the equipment.

Single input power source Supply power from one branch whip to multiple pieces of equipment, conveniently powering rack-mount equipment. Saves time and money during installation by using one branch whip and standard connections.

Wide range of input and output connections Product family includes a variety of input and output connections to distribute 120V, 208V, or 230V power to multiple outlets. Having a variety of inputs and outputs allow users to adapt to varying power requirements. APC offers units that bring up to 14.4kW using a single branch whip.

Output

Nominal Output Voltage	120V
Maximum Total Current Draw per Phase	15A
Output Connections	(16) NEMA 5-15R
Always on Outlets	16
Overload Protection	No



Input

Nominal Input Voltage	120V
Input Frequency	50/60 Hz
Regulatory Derated Input Current (North America)	12A
Input Connections	NEMA 5-15P
Cord Length	3.05 meters
Number of Power Cords	1
Acceptable Input Voltage	100-120 VAC
Maximum Line Current per phase	15A
Maximum Input Current per phase	15A
Load Capacity	1440 VA



Physical

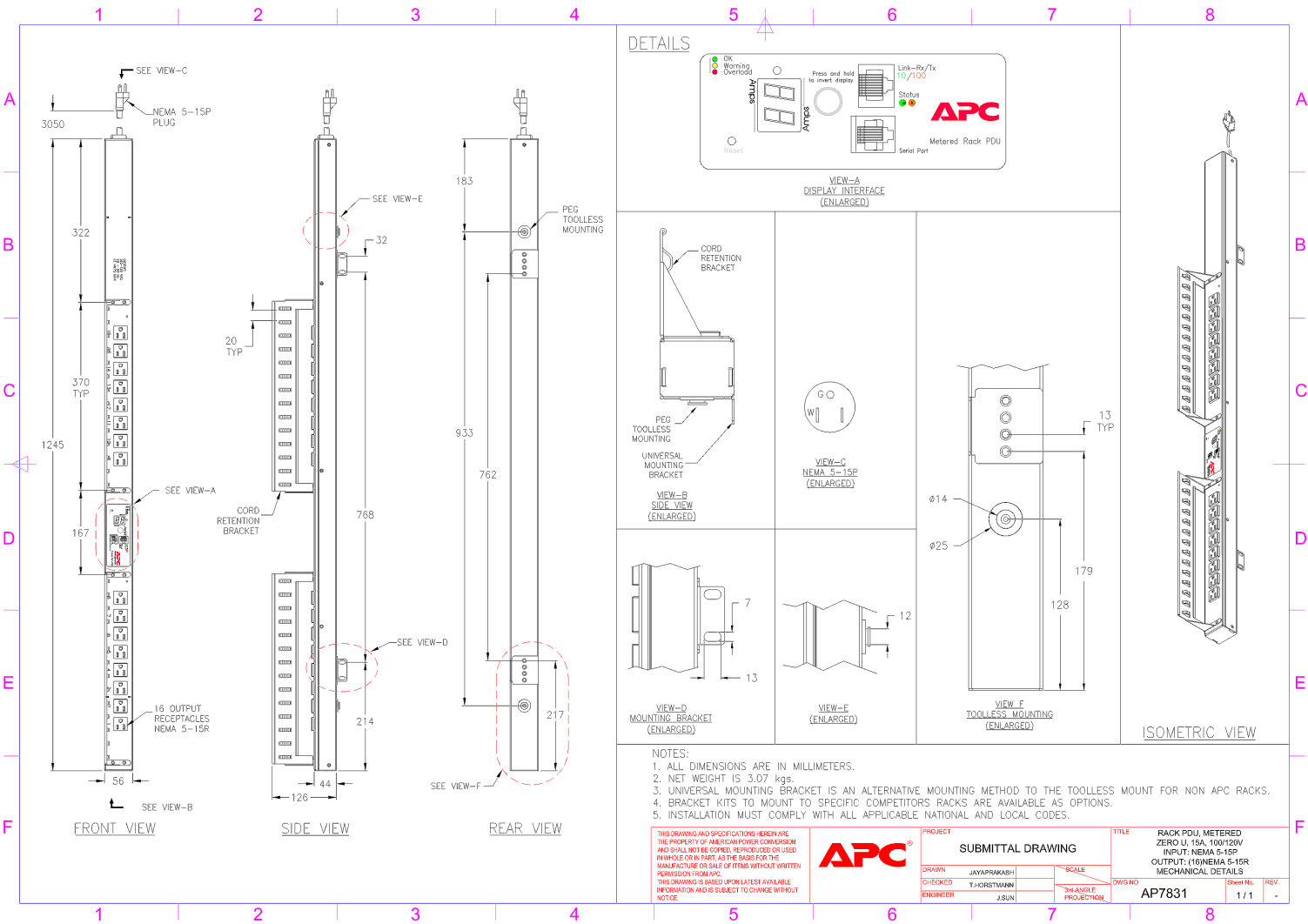
Net Weight	3.07 KG
Maximum Height	1245.00 mm
Maximum Width	56.00 mm
Maximum Depth	44.00 mm
Shipping Weight	3.98 KG
Shipping Height	2134.00 mm
Shipping Width	152.00 mm
Shipping Depth	127.00 mm
Color	Black

Environmental

Operating Environment	-5 - 45 °C
Operating Relative Humidity	5%
Operating Elevation	0-3000 meters
Storage Temperature	-25 - 65 °C
Storage Relative Humidity	5%
Storage Elevation	0-15000 meters

Conformance

Regulatory Approvals	cUL Listed,cUL Recognized,CSA C22.2 No. 42,CSA C22.2 No. 60950-1-03,FCC Part 15 Class A,ICES-003,Industry Canada,METI Denan,UL 60950-1,UL Listed,VCCI
Standard Warranty	2 years repair or replace
ROHS/WEEE Compliance	RoHS 7b Exemption



NOTES:

1. ALL DIMENSIONS ARE IN MILLIMETERS.
2. NET WEIGHT IS 3.07 kgs.
3. UNIVERSAL MOUNTING BRACKET IS AN ALTERNATIVE MOUNTING METHOD TO THE TOOLLESS MOUNT FOR NON APC RACKS.
4. BRACKET KITS TO MOUNT TO SPECIFIC COMPETITOR RACKS ARE AVAILABLE AS OPTIONS.
5. INSTALLATION MUST COMPLY WITH ALL APPLICABLE NATIONAL AND LOCAL CODES.

THIS DRAWING AND SPECIFICATIONS HEREIN ARE THE PROPERTY OF AMERICAN POWER CONVERSION AND SHALL NOT BE COPIED, REPRODUCED OR USED IN WHOLE OR IN PART, AS THE BASIS FOR THE MANUFACTURE OR SALE OF ITEMS WITHOUT WRITTEN PERMISSION FROM APC.
 THIS DRAWING IS BASED UPON LATEST AVAILABLE INFORMATION AND IS SUBJECT TO CHANGE WITHOUT NOTICE.



PROJECT		SUBMITTAL DRAWING		TITLE	
DRAWN		SCALE		RACK PDU, METERED ZERO U, 15A, 100/120V INPUT NEMA 5-15P OUTPUT: (16)NEMA 5-15R MECHANICAL DETAILS	
CHECKED		DWG NO		DWG NO	
ENGINEER		3-ANGLE PROJECTION		AP7831	
				1/11	
				REV	
				-	

Metered Rack PDU

Overview

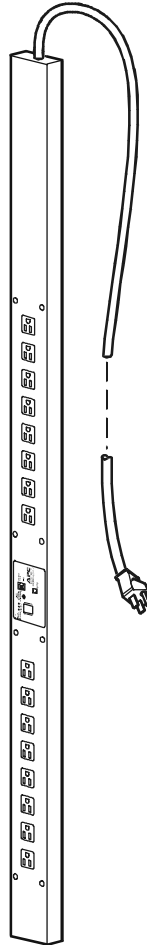
The American Power Conversion® Metered Rack PDU distributes power to devices in the rack. It has a sensor that measures the current used by the PDU and its attached devices. The PDU can be monitored through Web, Telnet, SNMP, SSH, or InfraStruXure™ Manager interfaces.

Outlets. The Rack PDU has sixteen (16) NEMA 5-15 outlets.

Display interface. A digital display shows the aggregate current used by the Rack PDU.

Power cord. The 10-foot (3.05-meter) power cord terminates with a NEMA 5-15 connector.

AP7831





Specifications for AP7831

Electrical

Input connector	NEMA 5-15 plug
Output connectors	(16) NEMA 5-15 outlets
Nominal input voltage	100 – 120 VAC
Acceptable input voltage	± 10% of nominal voltage
Input frequency	47–63 Hz

Physical

Dimensions (H × W × D)	49.00 × 2.20 × 1.75 in (126.46 × 5.59 × 4.45 cm)
Shipping dimensions (H × W × D)	84.00 × 6.00 × 5.00 in (213.36 × 15.24 × 12.7 cm)
Weight	6.75 lb (3.06 kg)
Shipping weight	8.75 lb (3.97 kg)

Environmental

Maximum elevation (above MSL)	
Operating	10,000 ft (3000 m)
Storage	50,000 ft (15 000 m)
Temperature	
Operating	23 to 113° F (–5 to 45° C)
Storage	–13 to 149° F (–25 to 65° C)
Humidity	
Operating	5 – 95% RH Non-condensing
Storage	5 – 95% RH Non-condensing

Compliance

EMC verification	VCCI, FCC Part 15 Class A ICES-003
Safety verification	UL/cUL 60950 Listed METI-DENAN



990-1773A