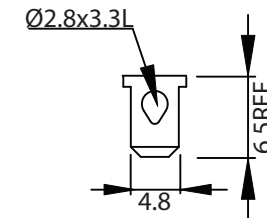
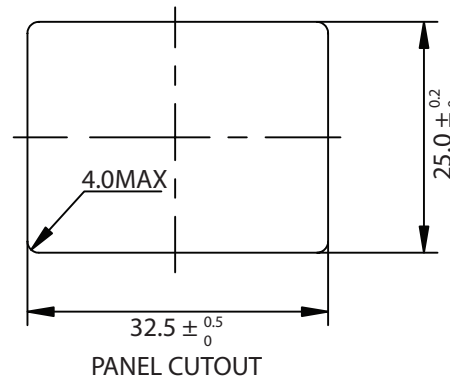
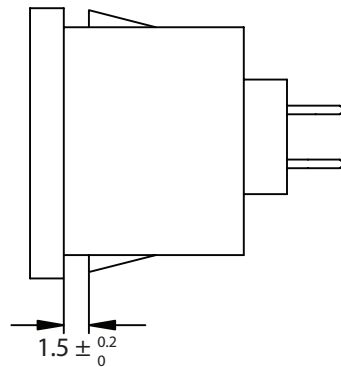
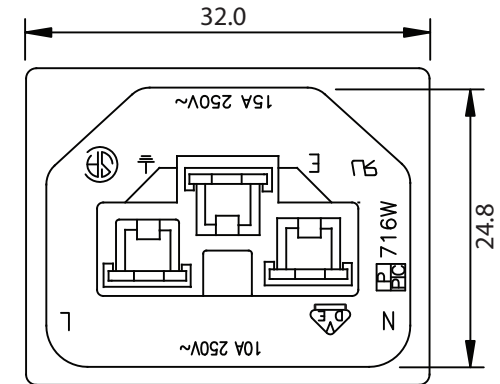
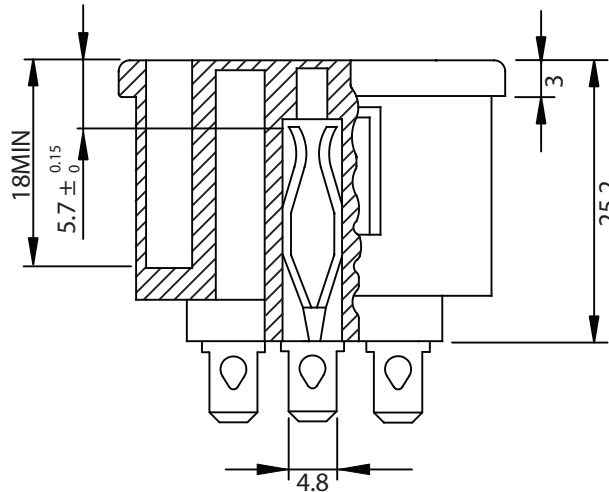
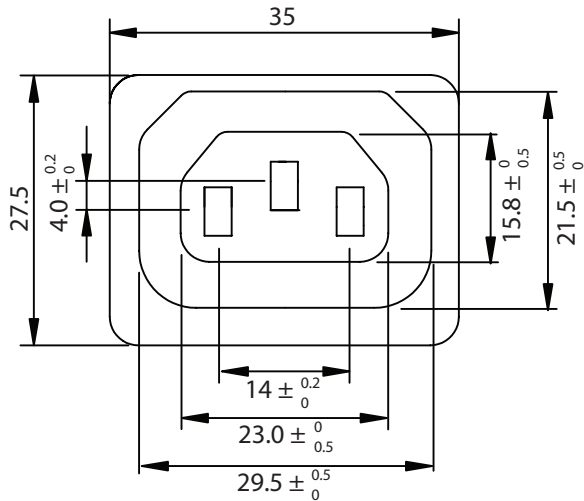


THESE DRAWINGS ARE THE PROPERTY OF QUALTEK ELECTRONICS AND NOT TO BE REPRODUCED FOR OR COMMUNICATED TO A THIRD PARTY WITHOUT THE EXPRESS WRITTEN PERMISSION OF AN OFFICER OF QUALTEK ELECTRONICS.

REVISION			
REV.	DESCRIPTION	DATE	APPROVED
B	RoHS Compliancy	06-01-06	DP
C	Updated Specifications	08-29-08	LY



NOTES:

MATERIAL:

HOUSING: THERMOPLASTIC
CONTACTS: COPPER ALLOY

RATING:

UL, CSA: 15A 250V AC
VDE: 10A 250V AC

INSULATION RESISTANCE: OVER 100M OHM AT 500VDC

DIELECTRIC STRENGTH: 2000V AC ONE MINUTE

APPROVALS: UL, CSA, VDE

PANEL THICKNESS: 1.5mm

RoHS COMPLIANT

CONTROLLED

Dim range (mm)		Tolerance +/- (mm)	Qualtek Electronics Corp. PPC DIVISION		
0-1		0.15	Part Number: 716W-15/10		RoHS Compliant
1-6		0.20	Description: AC RECEPTACLE		
6-18		0.30			UNIT: mm
18-50		0.50			REV. C
50-120		0.70	Drawn / Date	Checked / Date	Approved / Date
120-250		0.90	B.ZHANG	10-01-02	JJH / 10-01-02
250-500		1.20			