

HOME

MEET TEAM DANTONA

FIND A DISTRIBUTOR

CONTACT US

DANTONA
INDUSTRIES, INC.

For all your battery needs!

Power Tool Replacement Batteries



DANTONA PART SEARCH

5

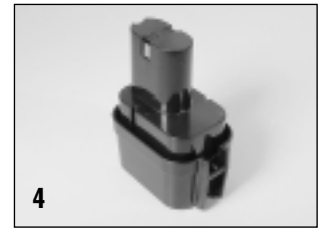
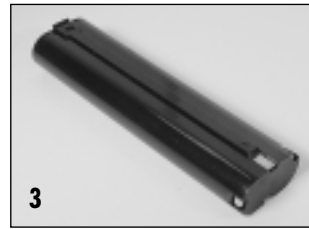
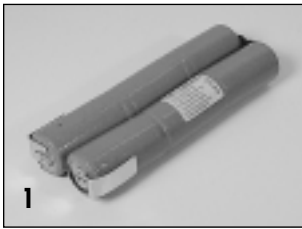


Dantona Part # TOOL-61

Voltage: 9.6
Capacity: 1500
Composition: NICAD
Dimensions:
Connector:

POWERTOOL BATTERIES

BATTERIES COMPATIBLE WITH MAKITA® PRODUCTS



PIC #	VOLTS	PART#	mAh	TYPE	X-REFERENCE W/Makita Battery Numbers
1	7.2V	TOOL-45	1500	NICD	6010
		TOOL-46	2400	NICD	6010 HI-CAP
2	7.2V	TOOL-47	1500	NICD	7000 (632002-4)
		TOOL-48	2000	NICD	7002 HI-CAP
		TOOL-49	2500	NIMH	7033 SUPER HI-CAP
3	9.6V	TOOL-50	1500	NICD	9000 (632007-4)
		TOOL-51	2000	NICD	9002 HI-CAP
		TOOL-52	2500	NIMH	9033 (192696-2) SUPER HI-CAP
4	9.6V	TOOL-55	1500	NICD	9100 (192019-4)
		TOOL-56	2000	NICD	9101, /A, 9102, /A, 192321-5, 194404-1
		TOOL-57	2500	NIMH	SUPER HI-CAP
5	9.6V	TOOL-61	1500	NICD	9120 (192638-6)
		TOOL-62	2000	NICD	9122 (192596-6)
		TOOL-63	2500	NIMH	9133, 9134, 9135, (192697-A) (193156-7)

PIC #	VOLTS	PART#	mAh	TYPE	X-REFERENCE W/Makita Battery Numbers
6	12V	TOOL-53	1500	NICD	1210 (632277-5)
		TOOL-54	2500	NIMH	1210 SUPER HI-CAP
7	12V	TOOL-58	1500	NICD	1200 (192271-4)
		TOOL-59	2000	NICD	1201, /A, 1202, /A, (192296-8) (192407-5)
		TOOL-60	2500	NIMH	SUPER HI-CAP
8	12V	TOOL-64	1500	NICD	1220 (192681-5)
		TOOL-65	2000	NICD	1222 (192598-2)
		TOOL-66	2500	NIMH	1233, 1234, 1235, (192698-A) (193157-5)
9	14.4V	TOOL-67	1500	NICD	STANDARD CAP
		TOOL-68	2000	NICD	1422 (192600-1)
		TOOL-69	2500	NIMH	1433, 1434, 1435 (192699-A) (193158-3)
10	18V	TOOL-70	1500	NICD	STANDARD CAP
		TOOL-71	2000	NICD	1822 (192827-3)
		TOOL-72	2500	NIMH	1835 (192829-9) (193159-1)

Makita is a federally registered trademark of Makit Electric Works, LTD.

POWER TOOL