

- Back**
- o PushPull Power
  - o Flat Cable Connectors SEK
  - o *har-mik®*
  - o D-Sub
  - o InduCom

---

- **Applications**

---

## Product details

---

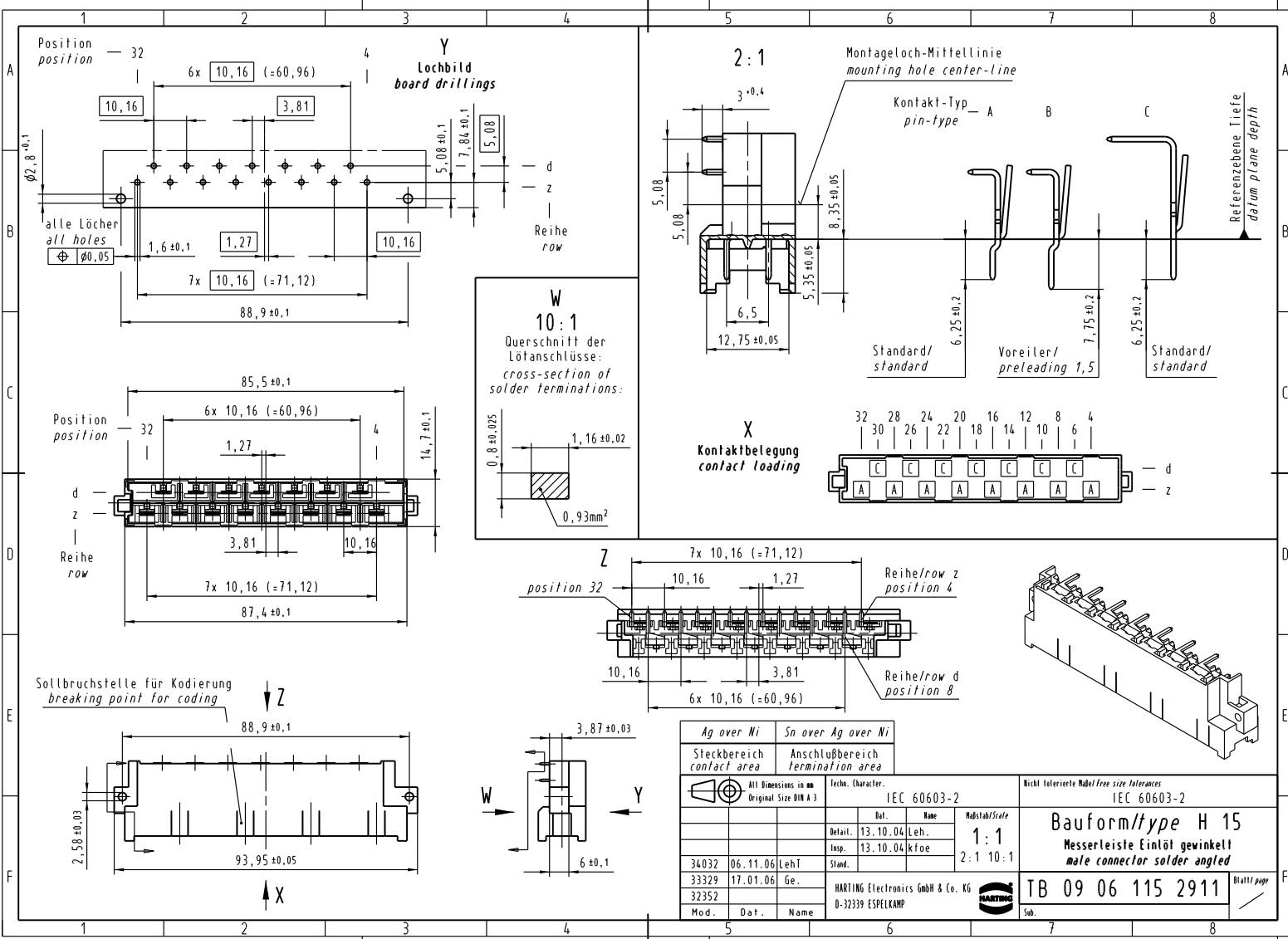
**09 06 115 2911**

### Printed board connector

Type	Type H
Standard/Inverse	Standard
Contact gender	Male contacts
Size	Whole size
Number of contacts	15 poles
Contact arrangement	Rows z and d
Termination	Angled solder pins
Termination length	3.0 mm
First mating contact	without first mating contacts
Performance Class	Performance level 1 as per IEC 60603-2
Contacts	with contacts
Row pitch	5.08 mm
Board fixing	Without fixing
Current	15 A max.
Clearance/ Creepage	4,5 / 8,0 mm min.
RoHS compliant	Yes

**Inquiry**

Alle Rechte vorbehalten. All rights reserved



Ag over Ni		Sn over Ag over Ni	
Steckbereich contact area		Anschlußbereich termination area	
All Dimensions in mm Original Size DIN A 3		Tech. Character.	
		IEC 60603-2	
		Nicht tolerierte Maß/Free size tolerances IEC 60603-2	
		Bauform/type H 15	
		Messerteile Eintlöt gewinkelt male connector solder angled	
		TB 09 06 115 2911	
		Blatt/ page	
		Sub. 7	

34032	06.11.06	LehT	
33329	17.01.06	Ge.	
32352			
Mod.	Dat.	Name	



HARTING Electronics GmbH & Co. KG  
D-32339 ESPELKAMP